

DEEP
KNOWLEDGE
GROUP



LONGEVITY
INDUSTRY
ANALYTICS

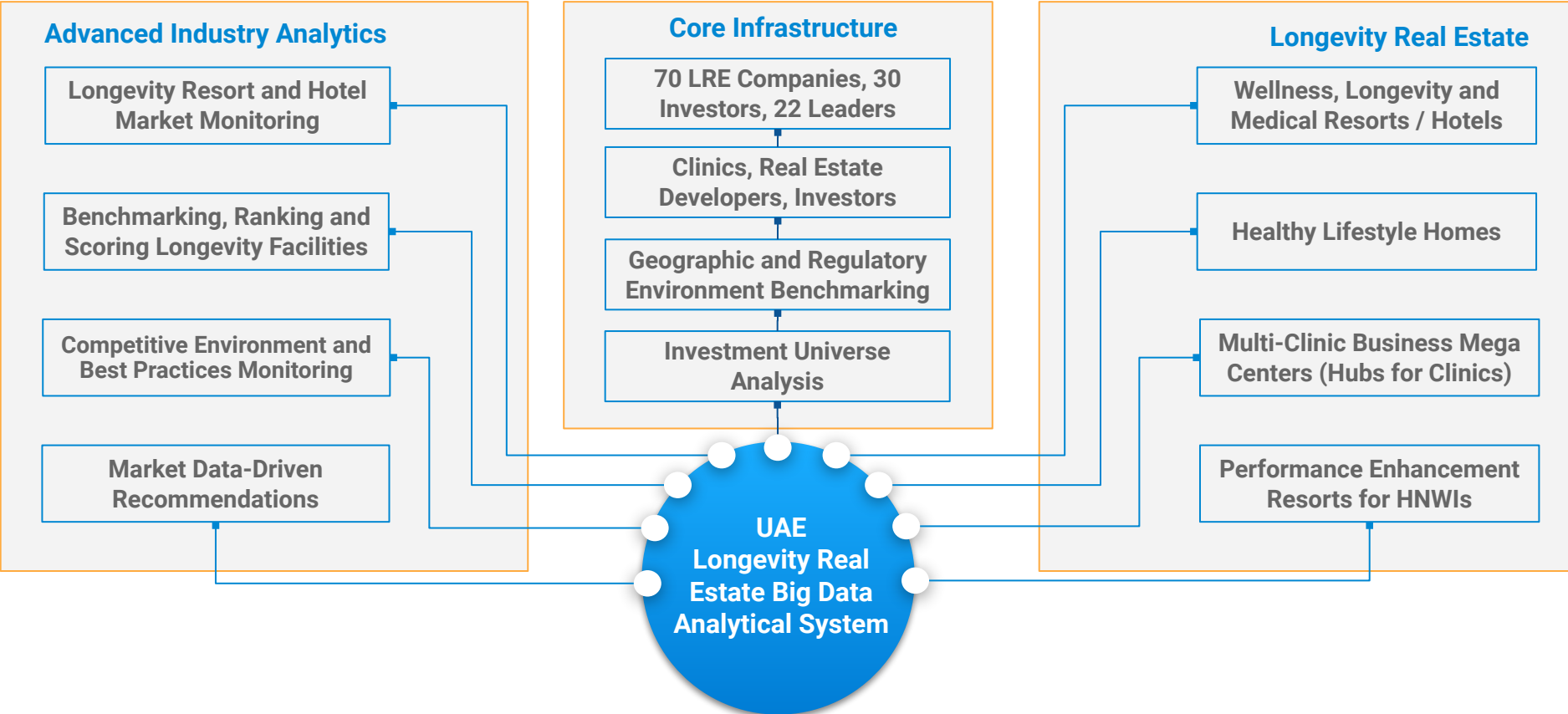
UAE Longevity Real Estate Market Intelligence System and Dashboard

*White Label Solution for Longevity, HealthTech
and Optimal Living Real Estate and Tourism*

Strictly Confidential

www.deep-innovation.tech/longevity-real-estate-uae

UAE Longevity Real Estate (LRE) Big Data Analytics System and Dashboard Components



Project Overview

AI-Driven Big Data Analytics System for Deep Market Intelligence on UAE Longevity Real Estate (LRE) Companies and Investors

End-to-End Infrastructure for Market Monitoring, Competitive Intelligence, Company Benchmarking and Investment Relations

AI Co-Pilot to Automatically Translate Longevity Real Estate Dashboard Insights into Practical Strategic Recommendations

Options for Standard Dashboard Subscription, Custom White Label Solution, and SaaS-Based Access to Select Components

Sophisticated Engagement Relations Management System (ERM) to Enhance Business Marketing and Client Relations

LRE Corporate Blueprints: Ideal Pipeline of Components for Different Use-Cases (Longevity Resort, Hotel, Home, etc).

Joint Product

SaaS Product



White Label Solution

Strategic Partnership

Longevity Real Estate in the UAE Big Data Analytics Dashboard



General Overview

Main Items

UAE Longevity Real Es...
Documentation

Database

Interactive Database
Database Spreadsheets
Macroparameters

Companies

Investors

Leaders

Dashboards

Longevity Internationa...
Global Medical Clinics ...
Medical Clinics Invest...
UAE HealthTech Analy...
UAE HealthTech Invest...
UAE Medical Clinics D...

Longevity Real Estate in United Arab Emirates

70 Companies

30 Investors

22 Leaders

Longevity Real Estate Ecosystem in UAE



Investors Database



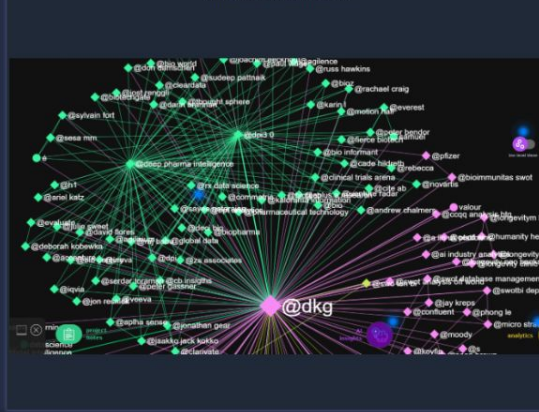
Leaders Database



Decision Makers and Leaders



Ultimate Decision Makers



Longevity Real Estate Analytics

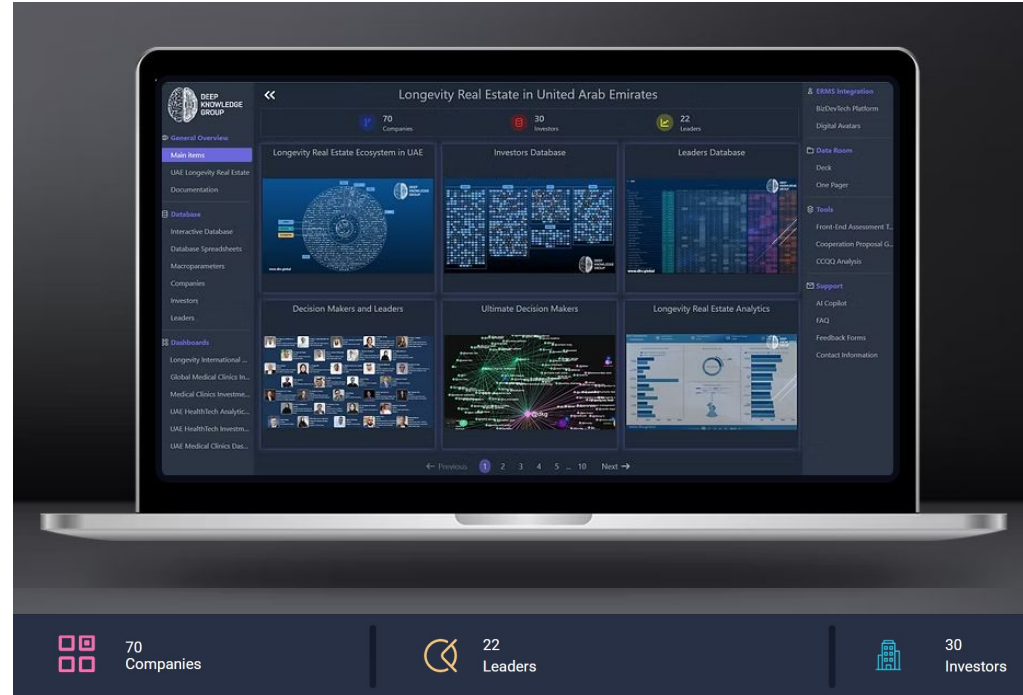


- ERMS Integration
- BizDevTech Platform
- Digital Avatars
- Data Room Material
- Deck
- One Pager
- Data Room
- GCC Data Room
- Tools
- Front-End Assessment
- Cooperation Proposal
- CCOQ Analysis
- Support
- AI Copilot
- FAQ
- Feedback Forms
- Contact Information

UAE Longevity Real Estate Dashboard and Market Intelligence System

The [UAE Longevity Real Estate \(LRE\) Dashboard](#) offers detailed insights into the UAE Longevity Real Estate industry ecosystem, encompassing a comprehensive set of tools for analytics, comparative assessment, market intelligence and operational environment monitoring across 70 companies and 30 investors active in this space in the UAE.

Built on the basis of our Global LRE Dashboard, it includes benchmarking, competitive analyses, customizable reporting, and in-depth profiles of Longevity Real Estate companies, investors and projects, comprehensive market and business intelligence, as well as benchmarks of the top projects and companies in the region, and corporate blueprints that enable clients to construct best-in-class Longevity Real Estate projects according to their desired specifications across multiple project types including Longevity homes, apartments, hotels, resorts, multi-clinic business centers and more, customized according to whether they are beginning construction from scratch or pursuing refurbishment of existing facilities.



Developed by Deep Knowledge Group's Life Sciences division and health-focused analytics subsidiaries, a group well known for their ownership of best-in-class databases, technical and methodological IP and Big Data Analytics Dashboards and Market Intelligence Systems, the UAE Longevity Real Estate Big Data Analytics Dashboard provides the most comprehensive and technologically sophisticated solution available to date for optimizing corporate decision making, business development and tactical strategy execution in the UAE.

8523
Companies

432
Investors

2850
Leaders

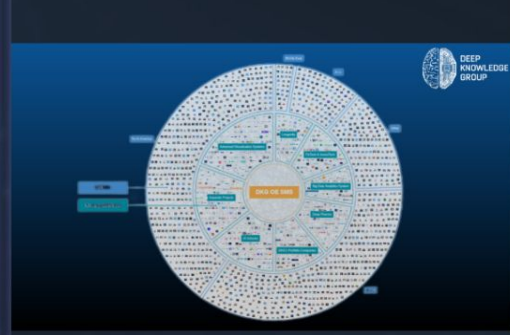
Macro Parameters



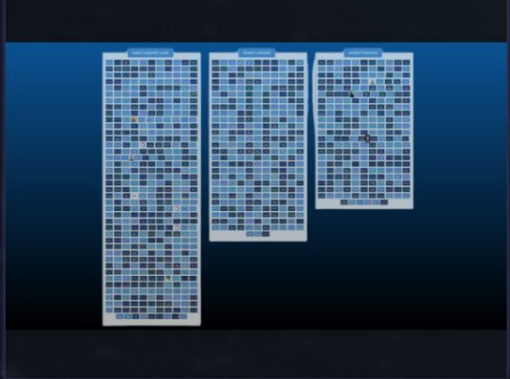
Longevity International Project - Internal Dashboard



Longevity Real Estate Universe



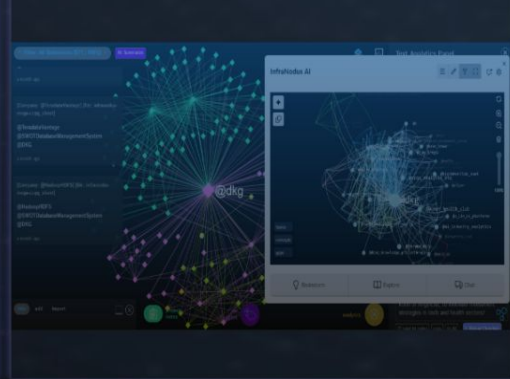
Cluster Analysis



Longevity Real Estate Analytics Report



Longevity Real Estate Companies Interactions Universe



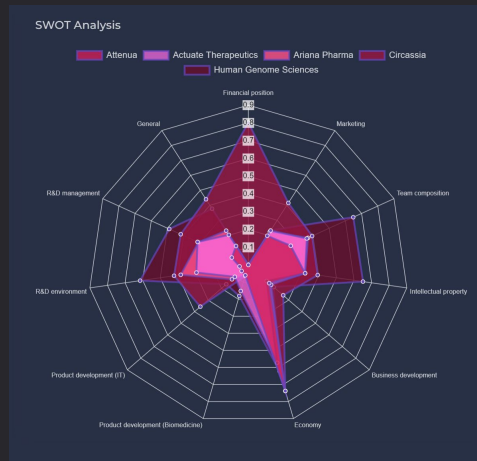
3406
Age Friendly Real Estate

5117
Longevity Friendly Real Estate

164
Countries

What are Dashboards?

We provide deep data science insights on the private and public markets via customized IT platforms we call Dashboards. In essence, Dashboards is a Big Data Analytical System that consists of separate Components or Dashboards:



Specialized data for critical decisions

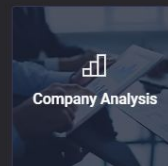
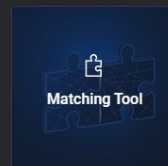
Dashboards by Deep Knowledge Group uncover actionable insights and trends for all companies and investors of DeepTech, HealthTech and Longevity Industries. Our visually pleasing platform provides unparalleled access to the public and private markets, and we are committed to providing unbiased data - information you can use to drive success at your firm.

Discover what you can do with our Dashboards

FOR INVESTORS



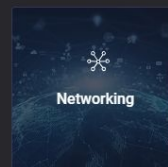
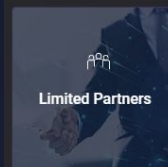
FOR COMPANIES



FOR ANALYSTS



FOR BUSINESS DEVELOPMENT MANAGERS

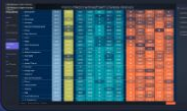


Dashboard Tools and Products

Analytical and Assessment Tools

Analytical and Assessment Tools

Benchmarking Visualisation Tool



Benchmarking Analysis Tool



Benchmarks Comparison Tool



Ecosystem Benchmarks Tool



Statistical Benchmarks Tool



Financial Benchmarks Tool



Evaluation and Comparison Tools

Evaluation and Comparison tools

Benchmarking Visualisation Tool



Benchmarking Analysis Tool



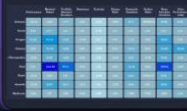
Benchmarks Comparison Tool



Ecosystem Benchmarks Tool



Statistical Benchmarks Tool



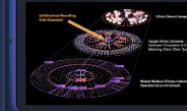
Financial Benchmarks Tool



Visualisation and Mapping Tools

Visualization and Mapping Tools

Benchmarking Visualisation Tool



Benchmarking Analysis Tool



Benchmarks Comparison Tool



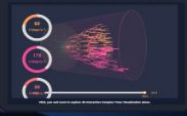
Ecosystem Benchmarks Tool



Statistical Benchmarks Tool



Financial Benchmarks Tool



Dashboard and Reporting Tools

Dashboard and Reporting Tools

Benchmarking Visualisation Tool



Benchmarking Analysis Tool



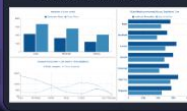
Benchmarks Comparison Tool



Ecosystem Benchmarks Tool



Statistical Benchmarks Tool



Financial Benchmarks Tool



Database and Management Tools

Database and Management Tools

Benchmarking Visualisation Tool



Benchmarking Analysis Tool



Benchmarks Comparison Tool



Ecosystem Benchmarks Tool



Statistical Benchmarks Tool



Financial Benchmarks Tool



Research and Parsing Tools

Research and Parsing Tools

Benchmarking Visualisation Tool



Benchmarking Analysis Tool



Benchmarks Comparison Tool



Ecosystem Benchmarks Tool



Statistical Benchmarks Tool



Financial Benchmarks Tool



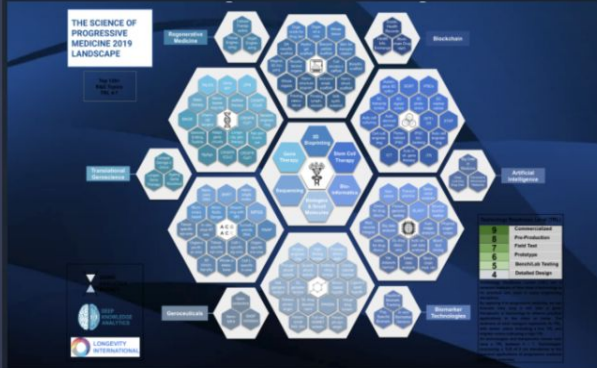
Enchanted Analytical Material



Industry Benchmarks

City	Country/Location	Days To Open Service Years	1st-6th Month Revenue (Mill)	Person Class	Client Prod C	Sales Culture Days 1-6 Months (Mill)	Pharmaceuticals (Mill)
Meyor Clinic	UAE	10	4.8	5	5	5	5
Freeman Life	UAE	10	4.8	5	5	5	5
Revelite Clinic	UAE	5	5	5	5	5	5
Key Clinics	UAE	5	5	5	5	5	5
Novomed Centers	UAE	4.8	4.8	5	5	5	5
University Hospital Sharjah	UAE	4.8	4.8	5	5	5	5
American Wellness Center	UAE	4.8	4.8	5	5	5	5
7 Dimensions Medical Center	UAE	4.8	4.8	5	5	5	5
King's College Hospital Dubai	UAE	4.8	4.8	5	5	5	5
South German Hospital Dubai	UAE	4.8	4.8	5	5	5	5
Mohdar Hospital	UAE	4.8	4.8	5	5	5	5
Reem Medical Group	UAE	4.8	4.8	5	5	5	5
Thumayyeh Clinic	UAE	4.8	4.8	5	5	5	5
Almehrezi Chry Med Clinic	UAE	4.8	4.8	5	5	5	5
Garfield Clinic Center Dubai	UAE	4.8	4.8	5	5	5	5
Emirates Specialty Hospital	UAE	4.8	4.8	5	5	5	5
German Medical Center	UAE	4.8	4.8	5	5	5	5
Wahdat Clinic & Hospital	UAE	4.8	4.8	5	5	5	5
Emirates Hospital Jumeirah	UAE	4.8	4.8	5	5	5	5
MGFPA Medical Center of Excellence Dubai	UAE	4.8	4.8	5	5	5	5
The Regenerative Clinic	UAE	4.8	4.8	5	5	5	5
Santa Maria	Mexico	4.8	4.8	5	5	5	5
REDCI Clinic	UAE	4.8	4.8	5	5	5	5
DNA Health & Wellness Clinic	UAE	4.8	4.8	5	5	5	5
Health Clinic	UAE	4.8	4.8	5	5	5	5
Suburban Longevity Hub by Clinique La Prairie	UAE	4.8	4.8	5	5	5	5
Perfection Regional Hospital	Canada	4.8	4.8	5	5	5	5
Bayler Scott & White Medical Center - Round Rock	UAE	4.8	4.8	5	5	5	5

Corporate Blueprint



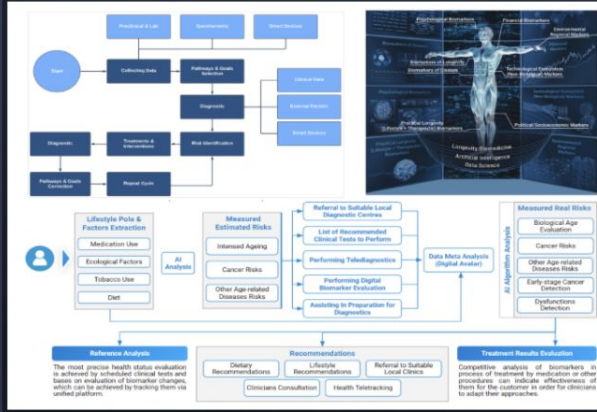
Tailored Market Research



Custom Benchmarks



Personal Blueprint



FOR INVESTORS

Advanced Companies Search for Investors

Explore companies with unseen precision. Many investors can confirm that looking for a suitable investment target starts with the creation of the database. The one that suits his/her needs and allows him/her to ask the right questions.

FOR INVESTORS

SWOTs & Matching Tool for Investors

Easily analyze companies market position and compare it across the industry. Any investment decision is conducted based on a specific analysis called due diligence. The process of due diligence encompasses the use of different approaches that allow analysis and comparison of companies. Thus, the assessment of one company ends up in a multi-layer comparison of tens or even hundreds of companies.

FOR COMPANIES

Limited Partners

Explore Limited Partners From Multiple Thematic Groups. Limited Partners are the driving force of any market. Many investment entities looking for those, aiming to allocate their money to their fund or firm. Yet this process takes a lot of time and effort.

Look at our [Limited Partners tutorial](#).

FOR BUSINESS DEVELOPMENT MANAGERS

Mindmaps

Easily analyze the market connections across different sectors and subsectors of the Longevity, Healthcare and Biotech industries.

Understand how different actors relate to each other in an interactive way. No matter what is the reasoning behind your market analysis, Mindmaps can serve as a powerful tool to track and understand your niche better!

Look at our [Mindmaps tutorial](#).

FOR ANALYSTS

Statistics charts

Access a powerful and easy-to-use analytical tool that will allow you to derive your own market insights today. Forget about lifeless statistics, data cleaning, and visualization problems. Use the database of more than 70,000 companies across different Longevity, Biotech, and Pharma sectors to envision the market in the way you want and need.

Look at our [Statistics charts](#).

FOR INVESTORS

R&D Collaborations and Clinical Trials for Investors

Analyze the intellectual property of the companies to drive your market understanding. While looking for an investment target, financial performance can be deceiving. In the case of pharmaceutical or biotech companies, the financial position can lead to an incorrect image of the company.

Look at our [Clinical Trials tutorial](#).

FOR COMPANIES AND INVESTORS

Forecasting & Reports for Investors and Companies

Access top-level forecasting solutions and reports to drive your market understanding. It's hard to imagine a proper investment pipeline without good forecasting and market analysis. Unfortunately, both of these things are really time-consuming and might take a lot of resources.

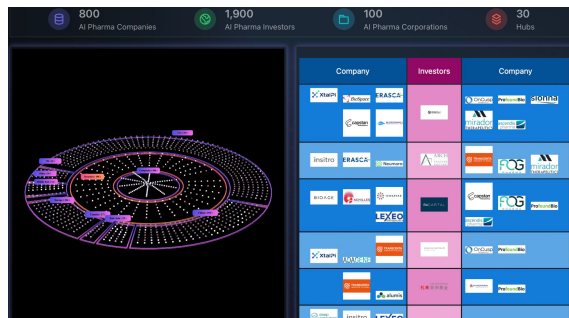
Look at our [Forecasting / Predictions tutorial](#).

Longevity Real Estate Industry Big Data Analytics System

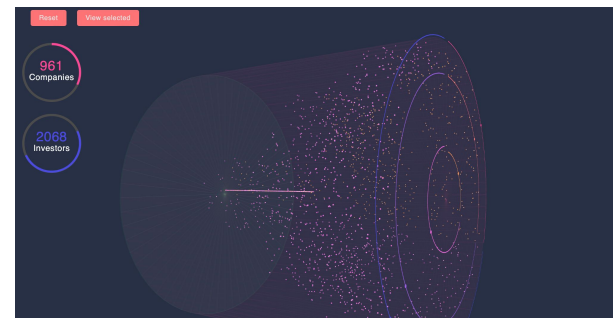
Longevity Real Estate Industry Mindmap



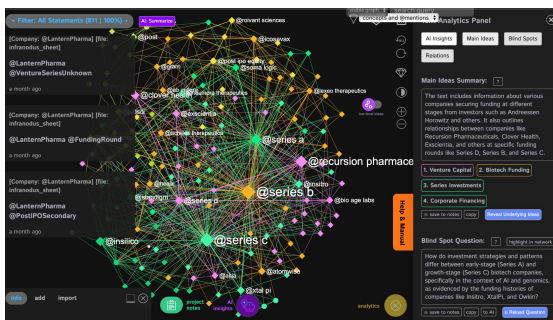
3D Industry Landscape



Longevity Real Estate Operational Environment



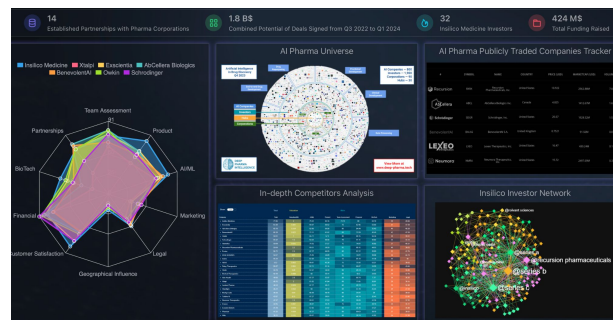
Longevity Real Estate Investment Universe



Ultimate Decision Maker Profiles (Competitors & Potential Partners)

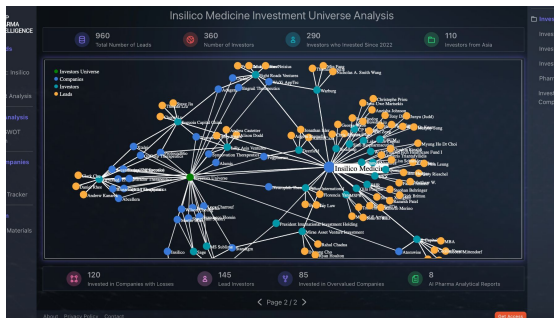


Analytical Infographics



Longevity Real Estate Industry Big Data Analytics System

Investor + Client Relations



Open Source Intelligence Analysis

Recommendation System

Name: WSJ Pro Venture Capital Group
 URL: <https://www.linkedin.com/groups/13534179>

Name: Board of Directors (TGL)
 URL: <https://www.linkedin.com/groups/2374182>

1. Highlight Aaron's strong background in both science and business, showcasing his expertise in the biotechnology industry.
2. Initiate communication through personalized messages referencing his roles at Boxer Capital, WSJ Pro Venture Capital Group, and TGL, demonstrating a thorough understanding of his professional interests.
3. Emphasize the potential for growth and innovation in the AI and Pharma industries, aligning with Aaron's investment goals and showcasing opportunities for impactful investments in cutting-edge biotechnology companies.

<http://www.linkedin.com/in/aaron-davis-684541>
<https://www.facebook.com/aaron.t.davis.92>

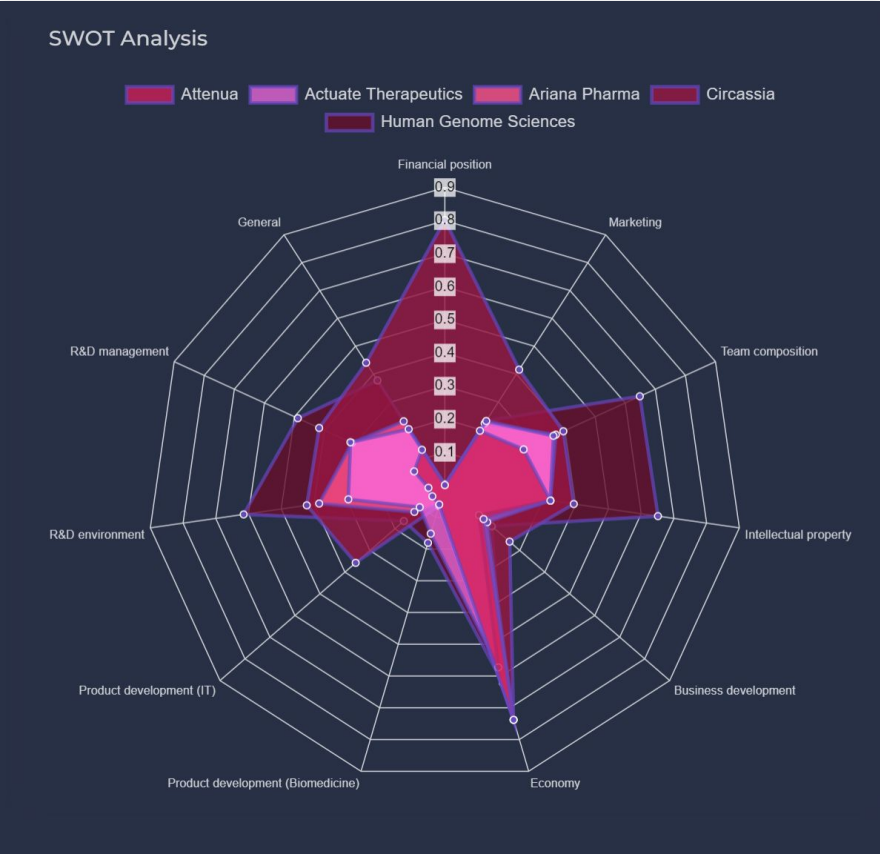
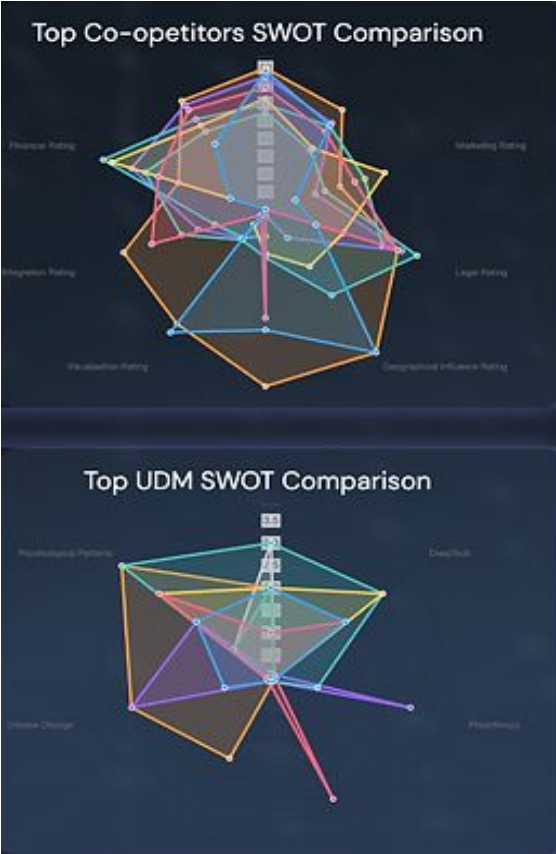
Ultimate Decision Maker Database

Clinics/Facilities Scoring System

INTELLIGENCE	890	720	610	500	390	280	170	60
• Neuroscience	6819	5681	4542	3403	2264	1125	686	320
• Owen	5891	4751	3612	2473	1334	895	456	217
• Schrodinger	5830	4690	3551	2412	1273	834	415	206
• Helix	5514	4374	3235	2096	1057	618	309	150
• Recursion Pharmaceuticals	5504	4364	3225	2087	1048	609	300	141
• Entero	5471	4331	3192	2048	1009	570	281	132
• Deer Run	5407	4267	3128	2019	1000	561	272	123
• Inerva	5358	4218	3079	1970	961	522	253	114
• Adoo	532	4180	3031	1931	922	483	214	105
• Teva Pharmaceuticals	5287	4141	3022	1922	913	474	205	106
• HeliX	5078	3932	2813	1714	805	396	197	98
• BioCruc Therapeutics	5010	3864	2745	1646	796	387	188	99
• Vero Health	4888	3723	2627	1529	670	329	150	71
• Takeda	4818	3653	2560	1462	661	310	141	72
• Lexion Pharma	4810	3644	2551	1453	652	301	132	73
• Bendigo	4621	3454	2362	1264	563	272	123	64
• Biogen	4540	3384	2295	1195	554	263	114	65
• Takeda	4530	3375	2286	1186	545	254	105	66
• Neurolytics	4527	3376	2287	1187	546	255	106	67
• Eisai	4510	3360	2270	1170	530	240	100	68
• Genentech	4170	3020	2030	1030	530	270	130	69
• Plurad	3930	2780	1790	800	490	240	120	70
• Alila	3831	2681	1691	701	401	211	111	71
• Lexion BioPharma	3738	2588	1598	608	308	162	82	72
• All Therapeutics	3680	2530	1540	550	250	120	60	73

Company and Investor Profiles

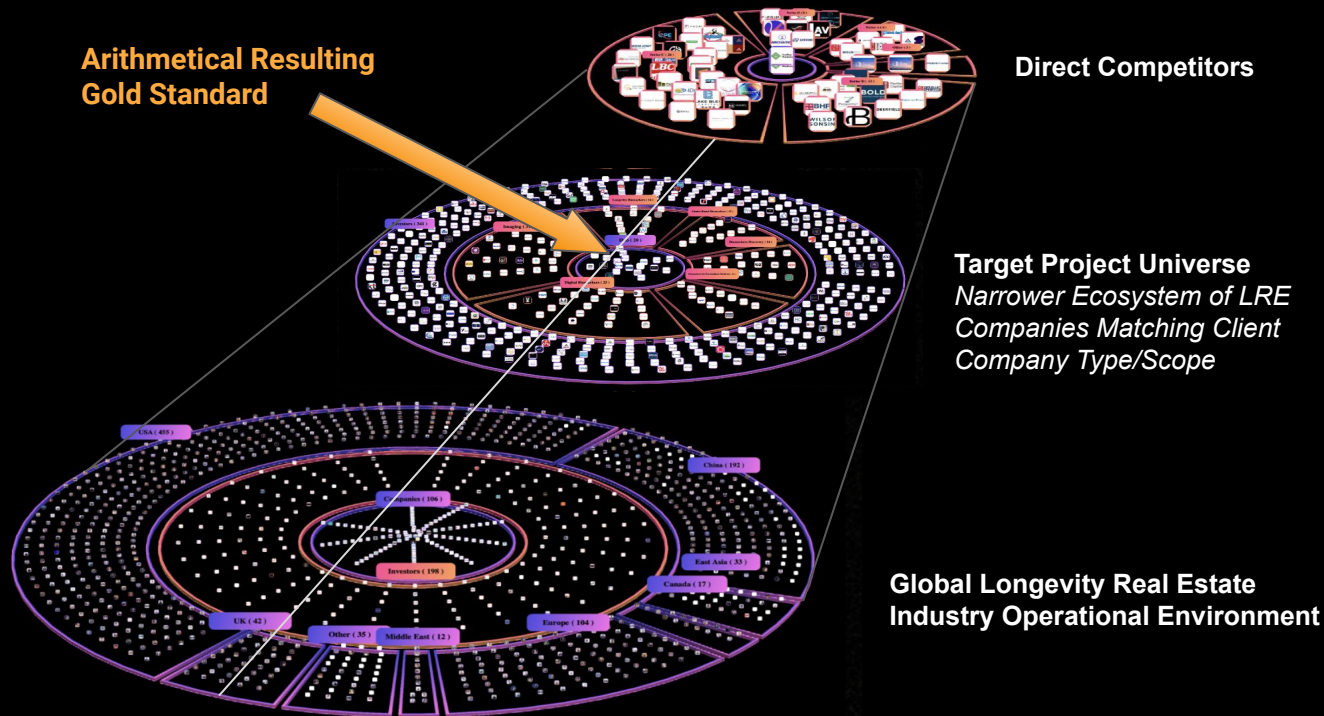
LRE Corporate Blueprints: Comparison of Your Project vs. Ideal Project



In addition to comprehensive end-to-end SWOT and comparative analysis between projects operating in the same project type and use-case domain, the Dashboard also allows clients to compare their project and company a hypothetical ideal project (blueprint) in the same focus area as yours. This enables more actionable, data-driven roadmapping for project planning and execution.

Mapping the UAE Longevity Real Estate (LRE) Synthetic Operational Environment

Arithmetical Resulting Gold Standard



A targeted, qualified shortlist of direct Longevity Real Estate competitors is obtained by mapping the full operation environment of the UAE Longevity Real Estate Industry, and filtering the subset of companies that match the client according to LRE project type (e.g, Longevity hotel vs. resort vs. home; new construction vs. refurbishment, etc.)

Narrow targeting then enables identification of the direct competitors of the client; however, parallel analysis of the full UAE LRE Industry also enables identification of gold standards and best practices both from similar and dissimilar projects.

Longevity Real Estate Corporate Blueprints

Longevity Real Estate Corporate Blueprints (Ideal Pipeline for Project Execution)

Hotel Refurbished into Longevity Clinic

Description: Transform an existing hotel or resort into a longevity clinic, blending hospitality with advanced wellness and medical services.

Features

1. Remodelling: Convert hotel rooms into medical suites and wellness areas.
2. Wellness and Health Services: Health assessments, anti-aging treatments, and personalised wellness programs.
3. Specialist Staff: Medical professionals, wellness coaches, and therapists.
4. Target Clients: Health-focused travellers seeking a combination of vacation and medical care.

Key Benefits: Provides health-conscious tourists with high-quality wellness services in a comfortable, familiar hotel setting.

New Longevity Clinic in a Resort

Description: A from-scratch longevity clinic built within a resort, designed for high-end clients seeking wellness services alongside their luxury vacation.

Features:

1. Eco-Friendly Design: Incorporates sustainable building materials and wellness-oriented architecture.
2. Comprehensive Medical Services: Diagnostics, anti-aging programs, and biohacking treatments.
3. Advanced HealthTech Equipment: State-of-the-art health tech, including body scanners and labs.
4. Target Clients: Elite guests wanting comprehensive health care integrated into their vacation.

Key Benefits: A luxury resort that offers not only relaxation but personalised longevity services for long-term health improvement.

Healthy Lifestyle Homes and Apartments

Description: Residential spaces focused on supporting wellness, from clean air to fitness facilities, providing residents with an environment that promotes overall health.

Features:

1. Clean Air Systems: Air and water purification for optimal health.
2. In-Home Fitness & Wellness: Yoga rooms, meditation spaces, and personal fitness facilities.
3. Smart Health Monitoring: Sensors to track air quality, sleep patterns, and physical health metrics.
4. Target Clients: Families or individuals focused on optimising their health in daily life.

Key Benefits: Residents enjoy continuous health improvements thanks to built-in features that promote mental and physical well-being.

Longevity Real Estate Corporate Blueprints

Longevity Real Estate Corporate Blueprints (Ideal Pipeline for Project Execution)

Longevity City Zones

Description: Urban areas or neighbourhoods designed with wellness in mind, featuring green spaces, eco-friendly infrastructure, and community health resources.

Features

1. Urban Design: Parks, walkable areas, and bike paths integrated into the city layout.
2. Wellness Centers: Clinics and wellness centres offering preventive health services, diagnostics, and treatments.
3. Sustainable Living: Eco-friendly buildings with low energy consumption and renewable energy sources.
4. Target Clients: Urban professionals and families seeking a health-focused lifestyle.

Key Benefits: Residents benefit from living in a clean, health-conscious environment that encourages physical activity and community connection.

Longevity Business Mega-Centers

Description: Large-scale facilities housing multiple health and wellness clinics under one roof, providing diverse services in one centralised location.

Features:

1. Multi-Clinic Setup: Offers a range of services, from regenerative medicine to wellness and mental health.
2. Shared Resources: Centralised labs, diagnostic tools, and data-sharing between clinics.
3. AI-Driven: AI-powered systems to manage patient data, diagnostics, and personalised treatment plans.
4. Target Clients: Healthcare professionals, companies, and high-net-worth individuals.

Key Benefits: A convenient, centralised location for advanced health services, offering cutting-edge treatments with streamlined processes.

Existing Longevity Clinic Upgrade

Description: Enhancing an existing clinic with new technologies, modern infrastructure, and expanded services to offer the latest in longevity and wellness.

Features:

1. Technology Upgrades: Implementing AI diagnostics, robotic treatments, and telemedicine platforms.
2. Expanded Services: Adding new wellness programs, such as biohacking, regenerative medicine, or mental health therapies.
3. Renovations: Upgrading patient spaces to create a more comfortable, modern healing environment.
4. Target Clients: Current patients and new clients seeking cutting-edge treatments.

Key Benefits: Offers more advanced services and a more comfortable patient experience, improving overall clinic performance.

Longevity Real Estate Corporate Blueprints

Longevity Real Estate Corporate Blueprints (Ideal Pipeline for Project Execution)

Loneliness-Combating Community Spaces

Description: Real estate focused on fostering social connections and reducing loneliness, integrating community wellness activities into residential living.

Features

1. Shared Social Spaces: Lounges, community kitchens, and co-working spaces that encourage interaction.
2. Organised Events: Group fitness, meditation sessions, and social events to promote bonding and reduce isolation.
3. On-Site Mental Health Services: Access to therapists and counsellors, group therapy sessions, and mental wellness workshops.
4. Target Clients: Seniors, singles, and those seeking stronger community ties.

Key Benefits: Encourages social engagement and emotional well-being, helping residents combat loneliness and mental health challenges.

Clean Air and Environmental Wellness Living

Description: Homes equipped with advanced air filtration systems and eco-friendly designs to provide an optimal living environment focused on respiratory and environmental health.

Features:

1. Air Filtration Systems: High-tech purification systems that continuously remove pollutants and allergens.
2. Green Design: Indoor plants and natural elements incorporated to improve air quality and mental wellness.
3. Real-Time Monitoring: Sensors that monitor indoor air quality and adjust systems automatically for optimal health.
4. Target Clients: Health conscious individuals with eco-friendly living goals.

Key Benefits: Cleaner air for better respiratory health, improved mental clarity, and reduced environmental stress.

Mindfulness and Meditation Residences

Description: Homes designed with mindfulness and meditation at their core, offering spaces and services focused on mental relaxation and stress relief.

Features:

1. Meditation Rooms: Calm, quiet spaces designed for meditation and relaxation, equipped with sound therapy and natural light.
2. Mindfulness Coaches: On-site or virtual meditation guides to help residents practise mindfulness.
3. Nature-Inspired Design: Open spaces with natural elements like water features and plants, promoting calmness and mental clarity.
4. Target Clients: Individuals seeking mental peace, emotional balance, and stress management.

Key Benefits: Promotes mental clarity, reduces anxiety, and fosters emotional well-being in everyday life.

Longevity Real Estate Corporate Blueprints

Longevity Real Estate Corporate Blueprints (Ideal Pipeline for Project Execution)

Wellness-Focused Family Homes

Description: Family homes designed to enhance overall wellness, with features that promote physical health, mental well-being, and family bonding.

Features

1. Family Wellness Programs: On-site or virtual coaching for parents and children focused on health, nutrition, and mental wellness.
2. Outdoor Play Areas: Safe, stimulating play spaces for children and fitness trails for the entire family.
3. Healthy Kitchens: Equipped with smart cooking appliances and water filtration systems for easy, nutritious meal preparation.
4. Target Clients: Families seeking a healthier, more connected lifestyle.

Key Benefits: Supports family health and wellness in a cohesive, nurturing environment.

Nature-Integrated Living Spaces

Description: Homes that blend indoor and outdoor living to enhance wellness through direct access to nature, promoting physical and mental health.

Features:

1. Indoor-Outdoor Living: Large windows, open-air patios, and garden spaces integrated into daily living areas.
2. Nature Therapy Programs: Access to activities like forest bathing, gardening, and nature walks.
3. Sustainable Materials: Homes built using eco-friendly, natural materials like wood and stone.
4. Target Clients: Nature lovers and those looking to reconnect with the environment for better mental health.

Key Benefits: environment for better mental health.

Key Benefits: Enhances mental well-being, reduces stress, and fosters a deeper connection with nature.

Multi-Generational Wellness Communities

Description: Communities designed for multi-generational living, offering wellness services tailored for different age groups to encourage family bonding and well-being.

Features:

1. Intergenerational Living: Homes designed to accommodate extended families, with shared spaces for interaction and separate areas for privacy.
2. Health Monitoring: Wearable tech and smart home systems that track the health of each generation, from children's activity levels to seniors' well-being.
3. Group Wellness Programs: Wellness activities for the whole family, such as yoga for all ages, fitness classes, and family-centred wellness coaching.

Key Benefits: Promotes mental clarity, reduces anxiety, and fosters emotional well-being in everyday life.

Forms of Proposed Cooperation

Deep Knowledge Group offers a variety of collaboration and cooperation options for parties seeking to enhance their strategic decision making, corporate and operational intelligence, and tactical execution capabilities by accessing one or more of our 70+ health and life sciences-focused Big Data Analytical Dashboards and Market Intelligence Systems.

We offer access to our Dashboards across 3 tiers: Subscription (baseline access to tools and components), White Label Solution (access to full scope of features with certain degrees of customization, personalization and plug-and-play feature selection), and Custom Dashboard Creation (end-to-end customized solution tailored to your specific operational needs and requirements).

Big Data Analytics Dashboard Subscription

- Subscription access is the most economical option for parties seeking to utilize our dashboards
- Offers full scope of ready-for-use analytics, corporate and competitive intelligence, market monitoring and benchmarking tools
- Discounted rates for multi-dashboard access available.

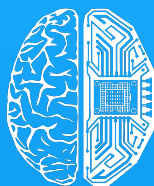
Big Data Analytics Dashboard White Label Solution

- Enhanced access to a wider scope of Dashboard features and functionality
- Includes a certain degree of client-directed Dashboard component and functionality customization and personalization and plug-and-play feature selection
- Highly flexible choice of data sources

Custom Market Intelligence Dashboard Creation

- End-to-end custom solution tailored to the operational and organizational needs and specifics of the client
- Plug-and-play feature selection
- Ground-up custom design of new components according to client need
- Most versatile, customizable and sophisticated option available

We are open to a mutually beneficial cooperation



DEEP
KNOWLEDGE
GROUP



LONGEVITY
INDUSTRY
ANALYTICS

www.dkv.global

info@dkv.global

www.aginganalytics.com

info@aginganalytics.com

Longevity Industry Analytics

100 Bishopsgate, London, UK
