



DEEP  
KNOWLEDGE  
GROUP  
*LIFE SCIENCES DIVISION*



Philanthropy  
International

# Lyme Investment Financing Enterprises (LIFE Fund)

*Data-Driven Impact Investment for Market-Ready,  
Human-Validated Lyme Disease Treatments*

[www.philanthropy.international/lyme](http://www.philanthropy.international/lyme)

# About Deep Knowledge Group

**Deep Knowledge Group** is a consortium of commercial and nonprofit organisations active on multiple fronts in the realm of DeepTech and Frontier Technologies (AI, Longevity, FinTech, GovTech, InvestTech), ranging from scientific research to investment, entrepreneurship, analytics, media, philanthropy, and more.

Deep Knowledge Group runs several data-driven **investments and financial vehicles**



DEEP KNOWLEDGE VENTURES



InvestTech Platform



LONGEVITY FINANCIAL CLUB



DeepTech and Longevity Industry Financial Advisors



LONGEVITY CARD



LONGEVITY CAPITAL

Deep Knowledge Group's **analytical subsidiaries** are world leaders in analytics for DeepTech and Longevity industries



AGING ANALYTICS AGENCY



Big Data Analytics Department



GovTech Analytics



FemTech Analytics



NeuroTech Analytics



DEEP KNOWLEDGE ANALYTICS



SpaceTech Analytics



DEEP PHARMA INTELLIGENCE

Deep Knowledge Philanthropy pioneers several infrastructural **social impact projects**



DEEP KNOWLEDGE PHILANTHROPY



LONGEVITY CLUB



LONGEVITY INTERNATIONAL



ATLAS



5th Industrial Revolution Institute



Swiss Longevity Valley



Biogerontology Research Foundation  
Prevent. Restore. Preserve.



Philanthropy International

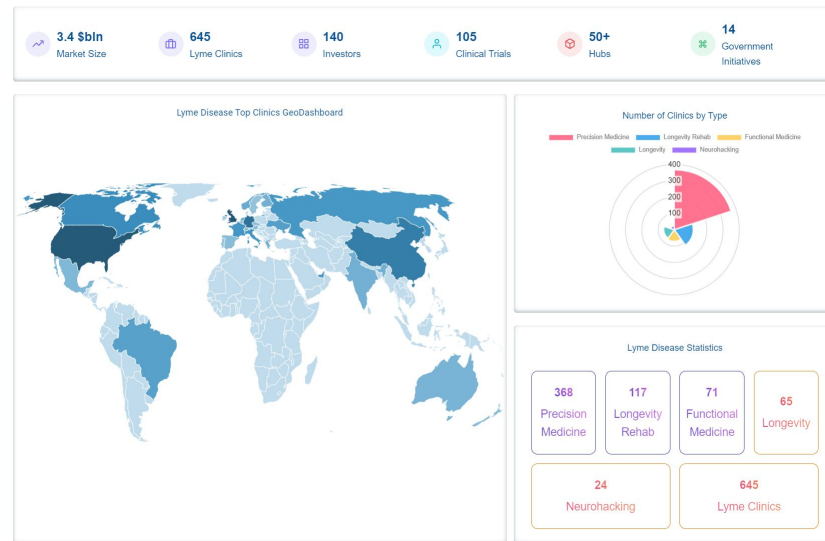
# Lyme Investment Financing Enterprises (LIFE Fund) Overview

Lyme Investment Financing Enterprises (**LIFE Fund**) is a first-of-its-kind impact investment and Techno-Philanthropy initiative led by Deep Knowledge Group that uses data-driven analytics to fund Lyme-focused companies and projects with the highest assessed probability of delivering real-world human impact on the global pandemic of Lyme Disease, backed by the best underlying science and medicine.

Structured as a rolling fund (modelled in terms of legal configuration on the example of Angellist's Evergreen Impact Investment Funds) to enable broader and more accessible participation from investors, the impact fund's investment target identification and capital allocation decision making is driven by Deep Knowledge Group's world-class Lyme Disease Global Pandemia Big Data Analytical System and Dashboard, which uses sophisticated AI-driven market monitoring and intelligence, comparative and competitive analytics, and scientific, medical and technological benchmarking to identify and fund high-impact Lyme projects.

The project is backed by Deep Knowledge Group, a global consortium of commercial and non-profit organizations united in their mission for supporting, developing and advancing DeepTech for social impact and techno-ethical business for social good, whose reputation for early identification of high-impact life sciences investment targets, the development and ownership of extremely sophisticated Frontier Science and Technology analytics, market intelligence and forecasting, and unwavering commitment to a mandate of Techno-Philanthropy is unmatched.

## Lyme Disease Global Pandemia GeoDashboard



# LIFE Fund: Lyme Investment Financing Enterprises

Data Driven Impact Investment Fund Focused on Funding High-Impact, Market-Ready, Human-Validated Lyme Disease Treatments

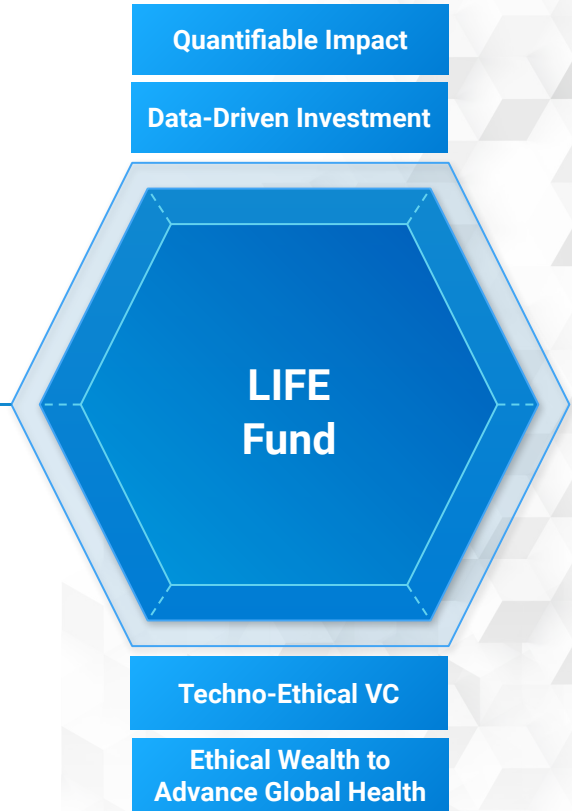
Investment Target Identification, Fund Composition and Structuring, and Capital Allocation Decision Making Driven by AI and Data Science

Global Lyme Pandemia Market Intelligence Big Data Analytical System Uses Deep Analytics, Ranking and Forecasting for Investment Decisions

Dual ROI: Profitable Capital Gains and True Impact on Lyme Disease

15% of Raised Capital Allocated to Internal Incubation Fund to Finance the Next Wave of Lyme Treatments (5-10 Years from Market Readiness)

Led by Global Consortium Renowned for Advanced Life Sciences Investment, Tech Industry Forecasting, and Techno-Philanthropy



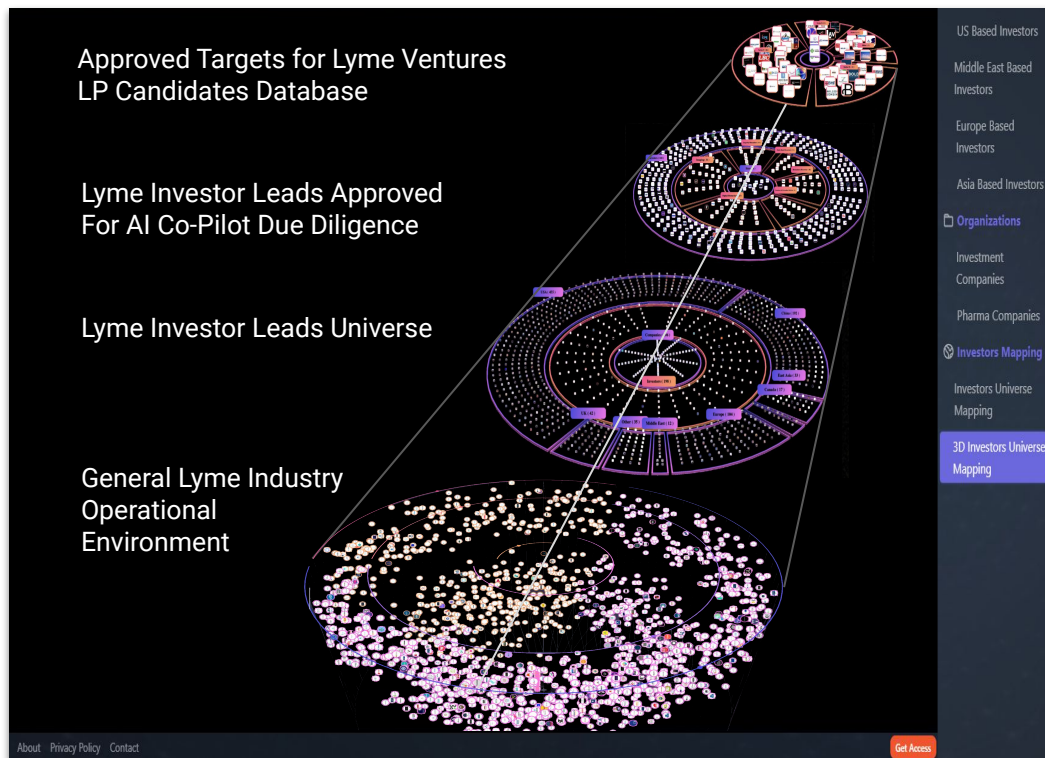
# Lyme Investment Financing Enterprises (LIFE Fund) Overview

Deep Knowledge Group has also developed a sophisticated [Investment Universe Big Data Analytics System](#) to monitor, model and track the operations environment of Ultimate Decision Makers (UDMs) in a variety of life sciences investment domains.

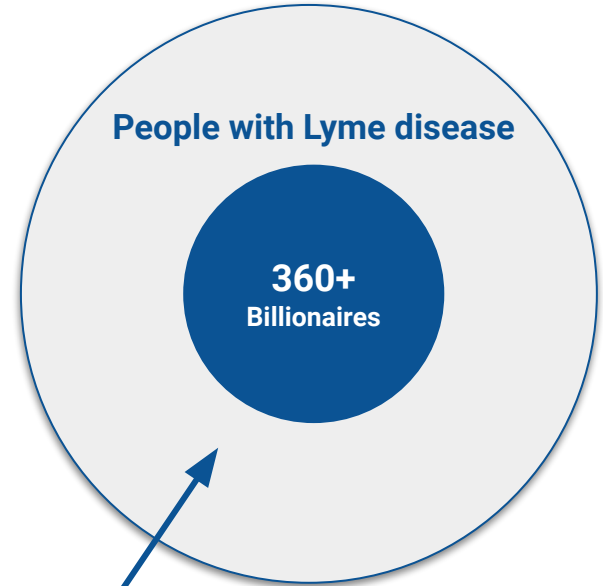
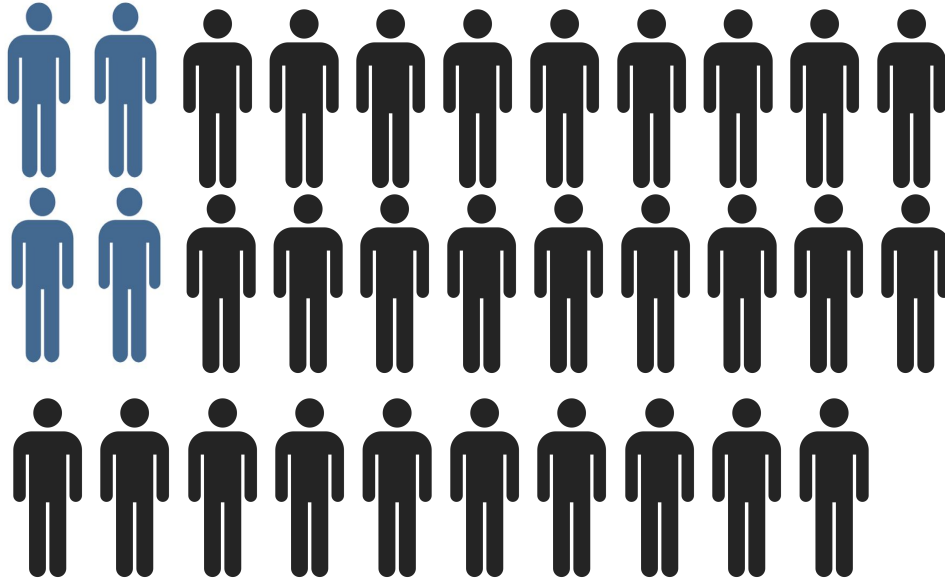
DKG has adapted this existing infrastructure for the purpose of identifying and profiling investors, HWNIs, celebrities and other high-calibre personalities with personal stakes in combating Lyme Disease Pandemia (**including 360+ billionaires who suffer from Lyme Disease themselves**).

These leads will form the initial LP targets for Lyme Ventures, and engagement with them will be conducted using the above-described business intelligence assets, combined with DKG's hybrid AI Co-Pilot-augmented automated [investor relations and engagement technology](#).

## Lyme Investment Universe Market Intelligence System



# Billionaires affected by Lyme disease



Over **360+** billionaires are affected by Lyme disease. This significant figure underscores the widespread impact of the disease across various demographics, highlighting the need for continued awareness, research, and support for those affected in high-profile spheres.

# Involvement of Celebrities in Lyme Awareness



**Karen Allen**



**Christy Turlington Burns**



**Amy Tan**



**Debbie Gibson**



**Alec Baldwin**



**Ben Stiller**



**Daryl Hall**



**Jordan Fisher**



**Marla Maples**



**Lauren Lovejoy**



**Ally Sheedy**



**Rebecca Wells**



**Dana Parish**



**Kelly Osbourne**



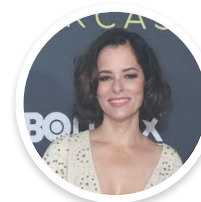
**Jamie-Lynn Sigler**



**Daryl Hannah**



**Ramona Singer**



**Parker Posey**



**Ashley Olsen**



**Debbie Harry**



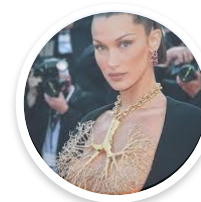
**Kathleen Hanna**



**Scott Jurek**

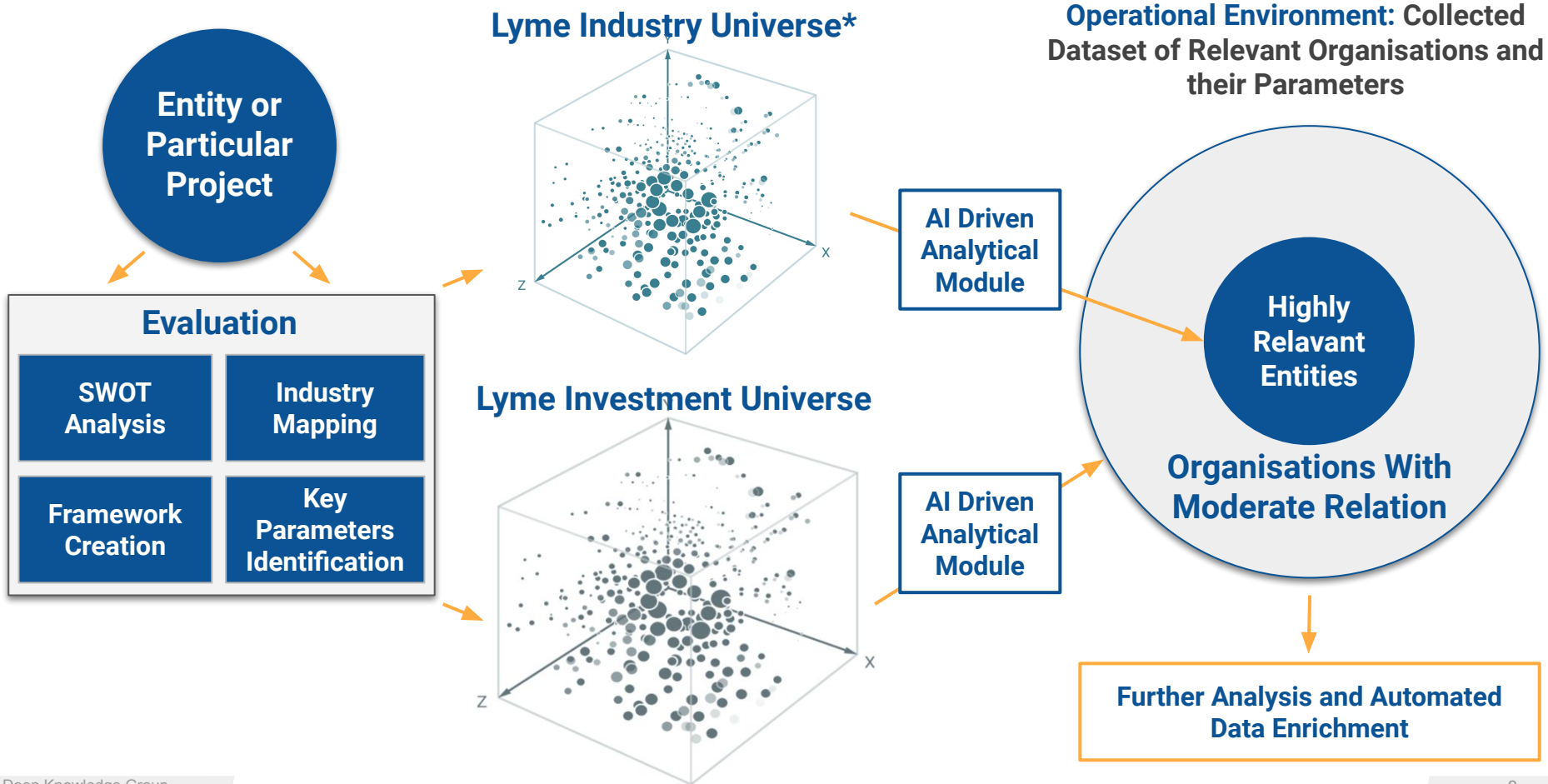


**Katina Makris**



**Bella Hadid**

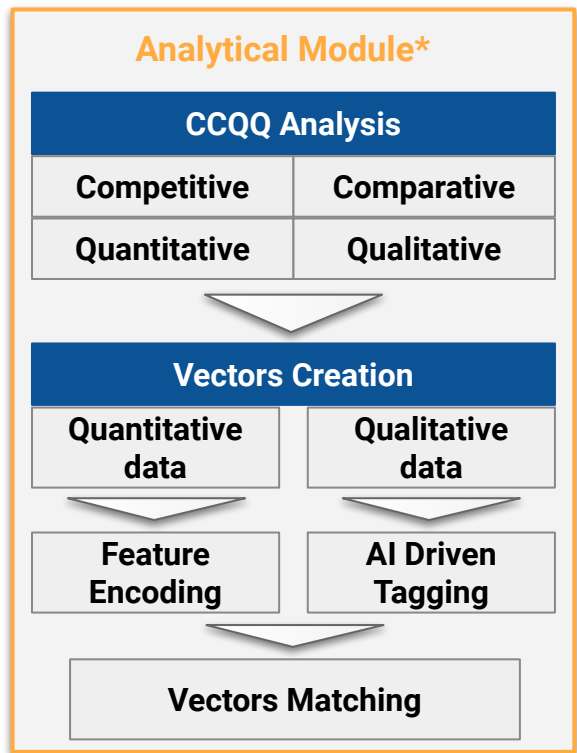
# Investment Universe Operational Environment Establishment



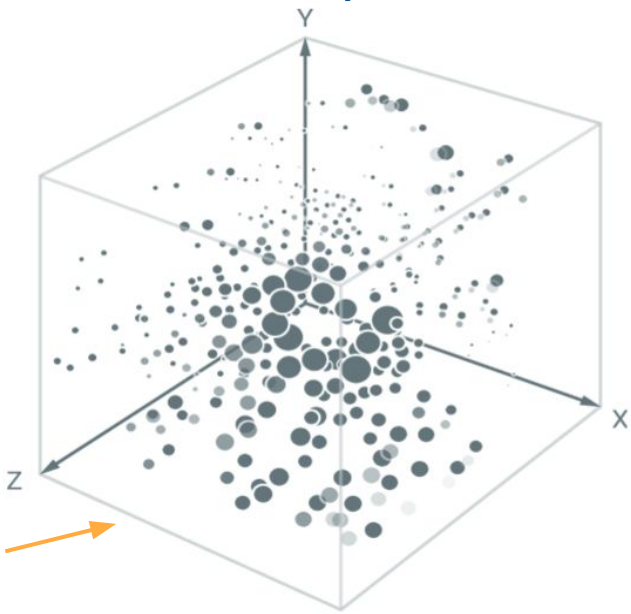


# Multi Dimensional Vector Space Establishment

Enriched Dataset of Relevant Organisations and their Parameters



Investment Universe Multi Dimensional Vector Space



**AI Augmentation System Construction**

\*Analytical Module encompasses multiple steps of data vectorisation and processing which are just partially showcased in the framework. More information can be provided upon request.

# Investment Relations Dashboard

## Chosen Entity Operational Environment

50 Companies

300 Investment Funds

### Initial Analysis

Interconnections Mapping

Investing History Research

Co Investing Patterns Detection

Financial Position Analysis

Current State Evaluation

Investment Focus Assessment

## Multi Factor Scoring

| Core Factors                         | Importance |
|--------------------------------------|------------|
| Number of Companies Invested in      | 1          |
| Number of Investments                | 2          |
| Participation as Lead Investor       | 3          |
| Focus Stage of Investment            | 4          |
| Last Round's Participation           | 5          |
| Repeated Investments                 | 6          |
| Investments in Field Since 2022      | 7          |
| Investments in Companies with Losses | 8          |
| Investments in Overvalued Companies  | 9          |
| Investments in Recovering Companies  | 10         |

50

Funds with High Score for Potential Engagement

250

Funds with Medium Score for Potential Engagement

# AI-driven Matching Tool

For Companies

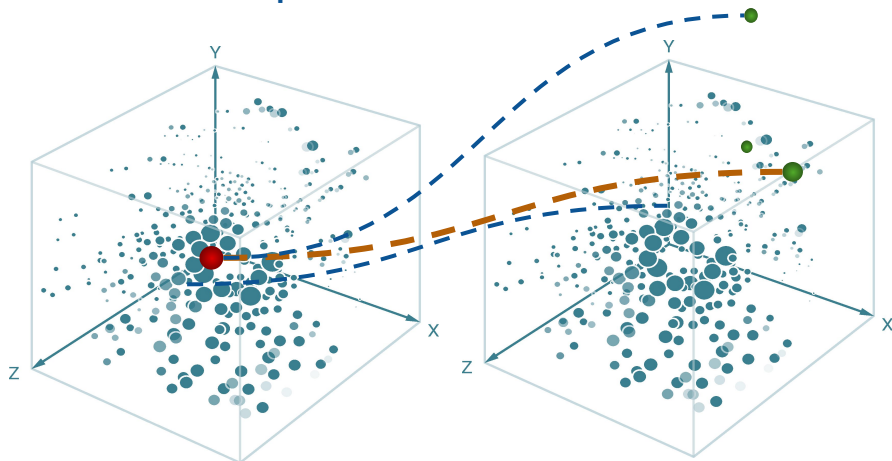
Based on algorithmic multiparametric analysis of the client and investor profiles, the AI-driven Matching Tool can within seconds match start-ups seeking to raise money with several hundreds of the most relevant potential clients and investors from a pool of several tens of thousands.

For Investors

Based on investors' preferences, the AI-driven Matching Tool can recommend the most relevant companies that can serve as potential investment targets for them, and immediately provide automated SWOT and comparative analysis.

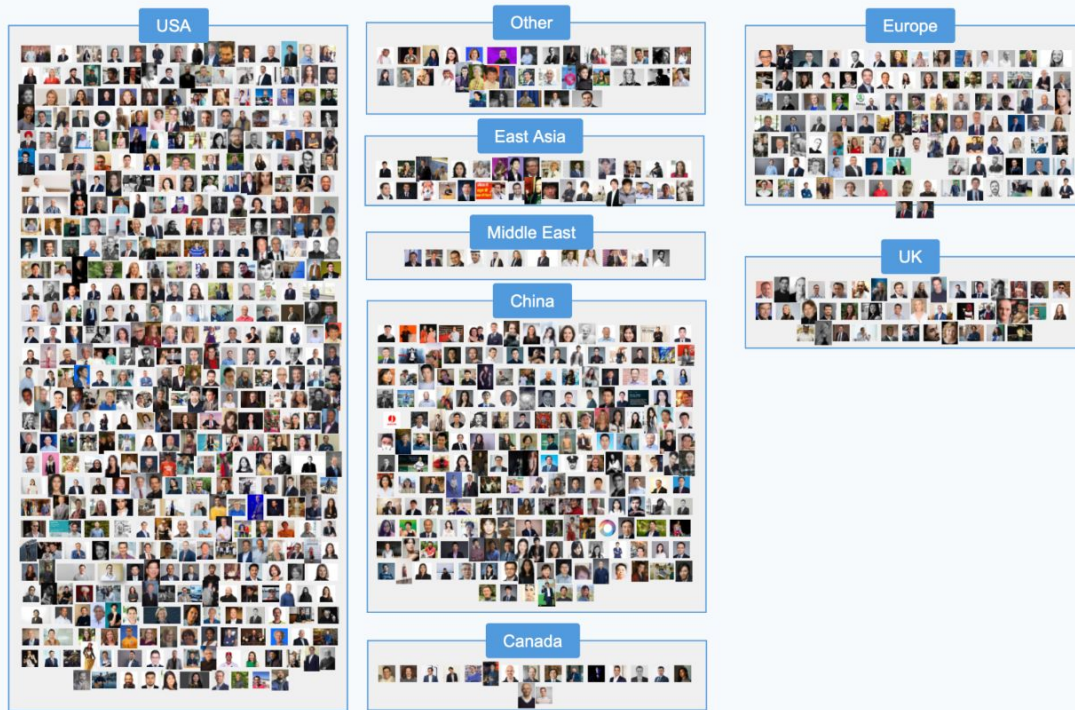
Universe of Companies

Universe of Investors



**Indirect matching approaches** based on deep learning and reinforcement learning to identify hidden patterns and connections are combined with **direct matching approaches** based on algorithmic and machine learning analysis of the known sectors of activity of companies, investment track-record, and preferences of investors. The matching tool is able to identify the matches between investors and start-ups out from the large set of entities based on input data parameters.

# Investors Cluster Analysis



← Back to report



Richard Gaster

Type: **Investors**  
Headquarters: **USA**

Entrepreneur & Venture Capital at Third Rock Ventures

Invests into

venBio Partners

Visit Website

richard@venbio.com

in <http://www.linkedin.com/in/richard-gaster-m-d-ph-d-44372815>

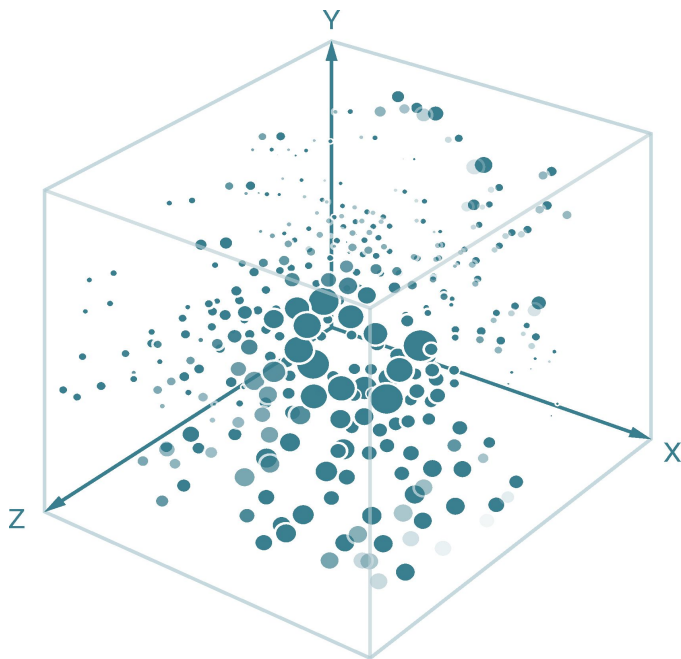
Register and Claim Ownership

Investors Cluster Analysis is a tool that helps interact with investors decision makers personal profiles and dissects the Investor Leads Universe into categories according to certain criteria such as Location.



# Individual Leads Analytics Dashboard

## Chosen Entity Investors Universe



50 High Score Investors

250 Mid Score Investors

## Associated Leads Search

High Score Investors

Mid Score Investors

## Decision Maker Extraction

High Number Extraction

Minimum 3 Decision Makers

## Data Enrichment

Contact Details Collection

Employment History

Open Source Intelligence

Additional Details

## Enriched Personal Profiles

AI Generated Personal Engagement Recommendations

Short Profile Summaries for Overview

300

Leads Associated with Investment Organisations with High Score

700

Leads Associated with Investment Organisations with Medium Score

# Investor's Personal Profiles with Recommendations for Engagement

**Investor Network**

- Investors Profiles
- Pharma Compaies
- Investment Companies

**Investor Profile: Aaron Hovav**

**Bio:** Aaron Hovav is a seasoned Portfolio Manager with a strong background in investment analysis and management. With experience at top financial firms, Buy-Side and Hedge-Fund, he has a proven track record of success in identifying growth opportunities in the technology sector. Aaron's expertise in global technology stocks and wireless communications sets him apart, and his private equity approach to public markets has consistently delivered attractive risk-reward opportunities. As a CFA Charterholder and Ph.D. from a top-tier university, Aaron brings a disciplined and research-driven approach to his work, making him a valuable asset to any investment team.

**Actions:** Shortlist, Add To Comparison

**Details**

|         |               |
|---------|---------------|
| Country | United States |
| Type    | Investor      |

**Connections**

|                 |                  |
|-----------------|------------------|
| Current Company | Surveyor Capital |
|-----------------|------------------|

**Additional Details**

|                 |                                 |
|-----------------|---------------------------------|
| Job Description | Director                        |
| Email           | aaron.hovav@surveyorcapital.com |
| Phone Number    | (212) 440-2142                  |
| Work            | aaron.hovav@surveyorcapital.com |

**Work Experience**

| Company                                       | Title                       | Location                        | Start    | End        | Description |
|---|-----------------------------|---------------------------------|----------|------------|-------------|
| Autor Capital                                 | Portfolio Manager           | New York City Metropolitan Area | 1/1/2022 | None       | None        |
| Autor Capital, a Division of Surveyor Capital | Analyst                     | New York                        | 1/1/2018 | 12/31/2021 | None        |
| Surveyor Asset Management L.P.                | Associate Portfolio Manager | New York                        | 1/1/2018 | 12/31/2017 | None        |

**Certifications**

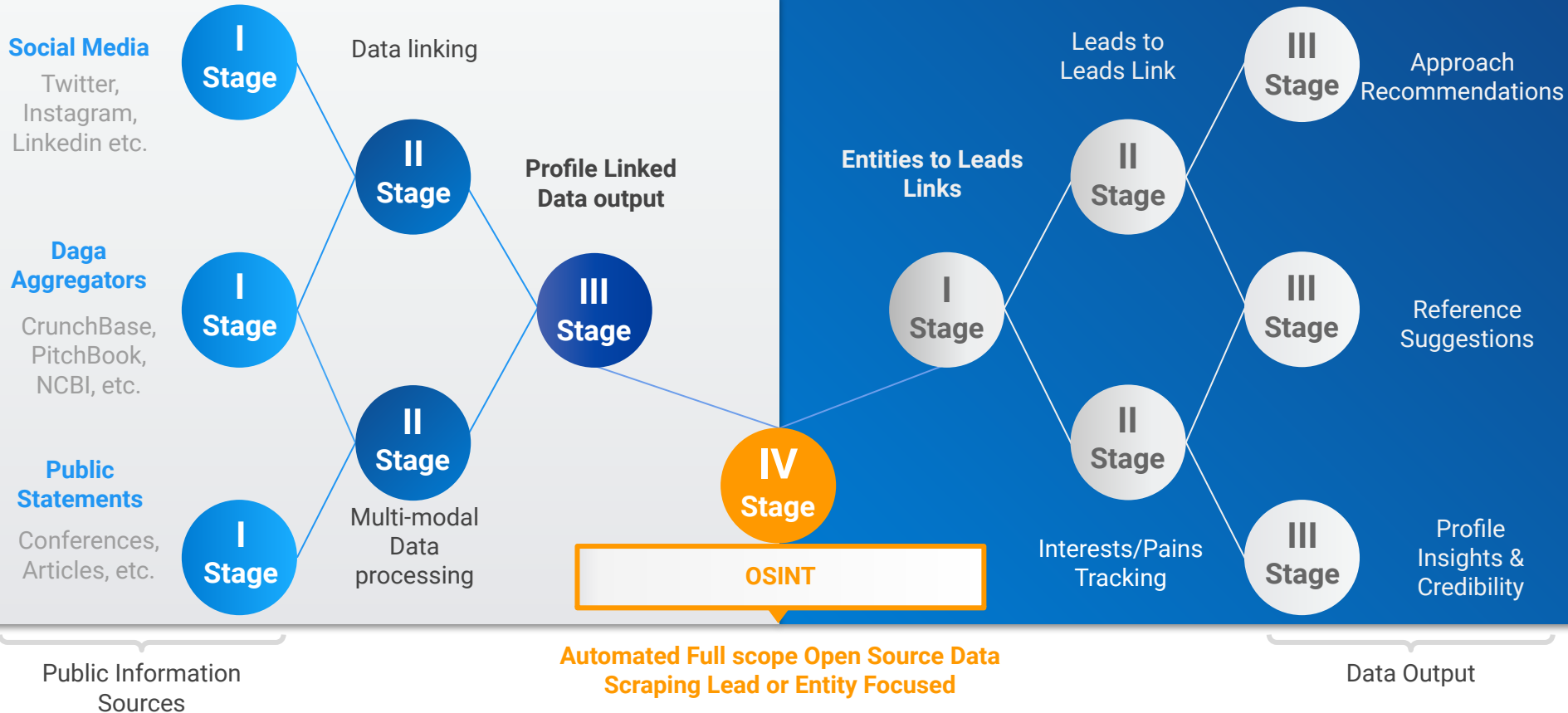
| Name | Code | Issued | Authority     | URL  |
|------|------|--------|---------------|------|
| CFA  | None | None   | CFA Institute | None |

**Engagement Recommendations**

- Emphasize Aaron's strong background in investment analysis and management, particularly in technology stocks and global markets.
- Initiate communication by referencing his experience at top financial institutions like Morgan Stanley and Buy-Side Asset Management, showcasing a shared industry background.
- Highlight the opportunity for personalized investment in the AI and Pharma industries, aligning with Aaron's passion for technology and global markets, and showcasing the potential for strong returns and attractive risk-reward opportunities.

The Personal Profiles feature of the Dashboard offers a comprehensive database of over 1000 investor decision-makers, each profiled with meticulous detail. These profiles are augmented by an OSINT-enhanced analysis which includes: contact details, relevance scores for outreach, and AI-generated engagement recommendations.

# Open Source Defensive INTelligence Analysis





# Global Lyme Disease Pandemia Dashboard

The **Global Lyme Disease Pandemia Dashboard** is a robust market intelligence, monitoring, benchmarking and forecasting system that uses AI and Big Data Analytics to deliver tangible market intelligence on the Global Lyme Disease research and treatment ecosystem across industry, academia, science, Medicine and technology.

It aggregates data from various authoritative sources and presents it through intuitive and interactive charts and graphs, effectively detailing key statistics and trends in prevalence, diagnosis, and treatment markets. The dashboard includes a **clinical trials chart** by country, a comprehensive year-by-year **line graph of Lyme cases**, and an informative **world map** highlighting affected populations. Additionally, it features a projected market size chart for Lyme disease treatments, effectively indicating potential growth opportunities.

This sophisticated and advanced platform is fortified by the support of **140+ investors**, **100+ clinical trials**, **640+ top clinics**, and an impressive database of **17000+ data points**.

***DKG's Lyme Disease Global Pandemia Big Data Analytical System and Dashboard will be used as the main basis for the fund's investment target identification and due diligence processes.***



140+

Investors

100+

Clinical Trials

640+

Top clinics

17000+

Data points

# Why Lyme Disease is a Global Pandemia



**More than 14%**

Population are living with Lyme & its consequences



**Every 7th person with Lyme**

But almost 2/3 cases are not diagnosed



**Healthcare burden**

Lyme provokes multiple health issues



**> 1.1 billion people**

Global impact on all age groups



**> US\$ 1.3 billion**

of healthcare expenditure for Lyme treatment

As of 2023, the global population has reached 8.14 billion. Approximately 14% of this population, which equates to 1.1376 billion people, is estimated to be affected by Lyme disease. Roughly one in every seven individuals is grappling with Lyme. However, unofficial statistics suggest that the actual number could be three times higher, emphasizing the pervasive nature of Lyme disease and its classification as a global pandemic. All of these despite the fact, that there is more than \$1.3B of healthcare expenditure for Lyme treatment.

# Why Lyme Disease is a Global Pandemia

As of 2023, the global population has reached 8.14 billion. Approximately 14% of this population, which equates to 1.1376 billion people, is estimated to be affected by Lyme disease.

***Roughly one in every seven individuals is grappling with Lyme.***

However, unofficial statistics suggest that the actual number could be three times higher, emphasizing the pervasive nature of Lyme disease and its classification as a global pandemic.

All of these despite the fact, that there is more than \$1.3B of healthcare expenditure for Lyme treatment.

**More than 14%**

Population are  
living with Lyme & its  
consequences

**Every 7th person  
with Lyme**

But almost 2/3 cases are not  
diagnosed

**Healthcare burden**

Lyme provokes multiple  
health issues

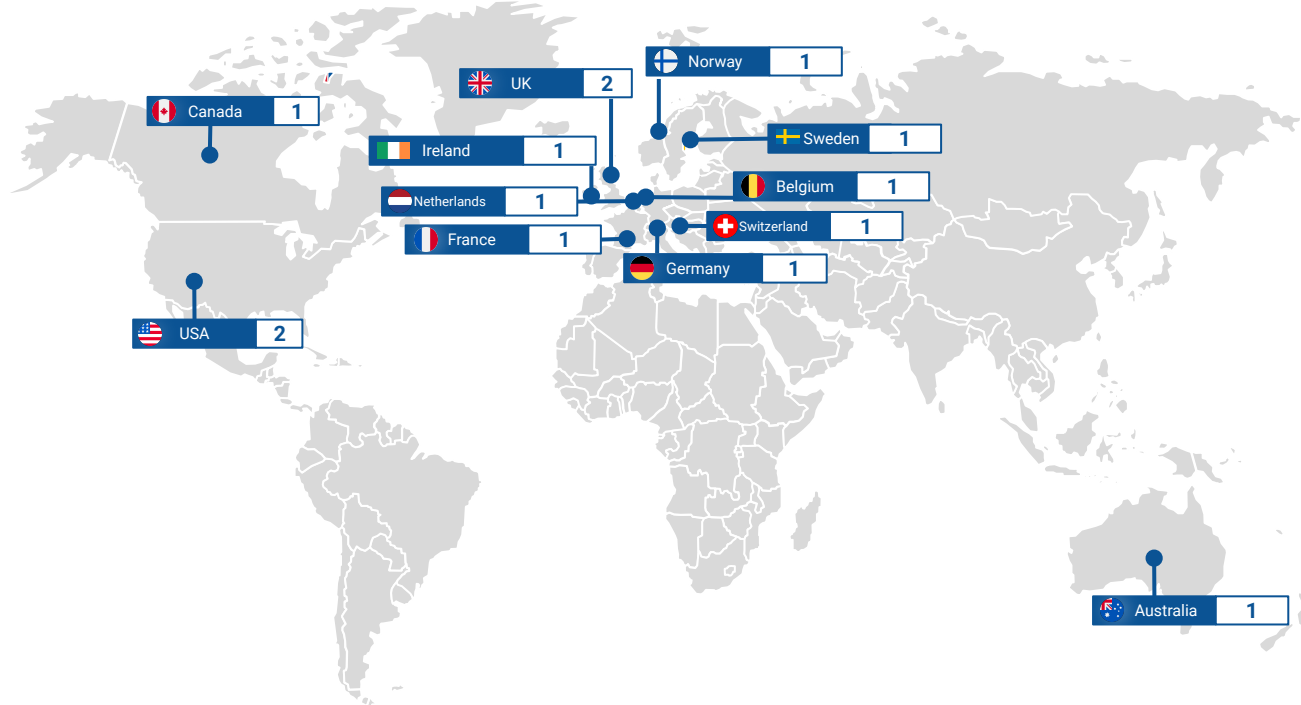
**> 1.1 billion people**

Global impact on all age groups

**> US\$ 1.3 billion**

of healthcare expenditure for Lyme  
treatment

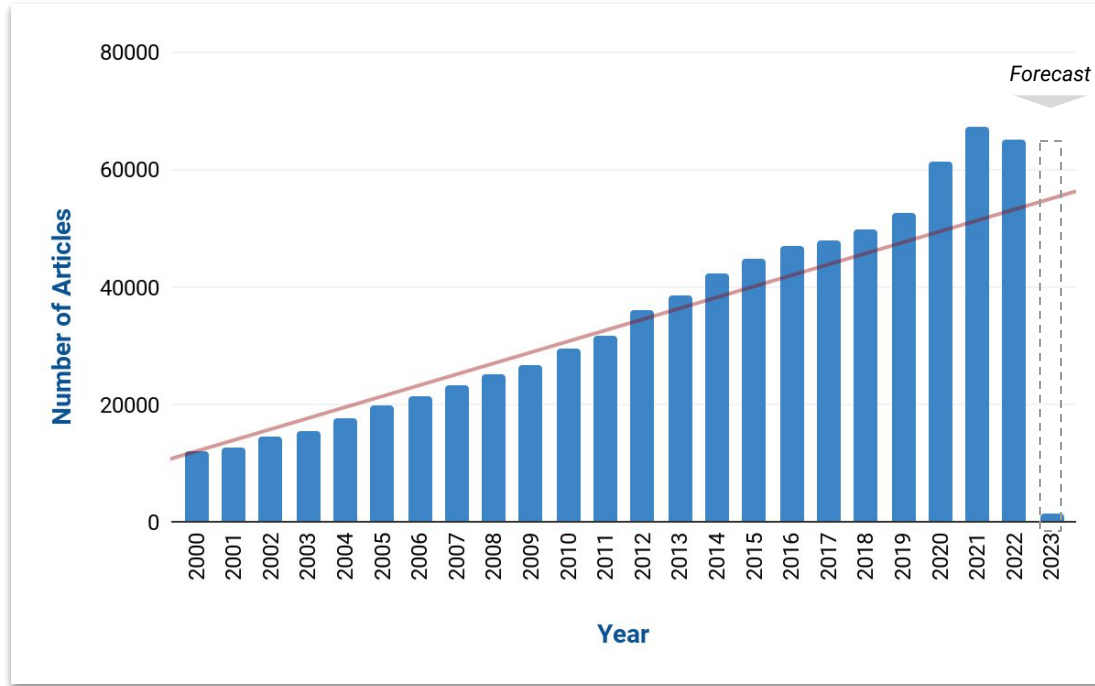
# Global Government Initiatives Addressing Lyme



Governments worldwide have recognized **the growing impact of Lyme disease** and initiated dedicated efforts to address its challenges. More than in **15 countries** have established parliamentary groups and governmental initiatives, representing a **collaborative approach** to enhance awareness, research, and policies for a comprehensive response to the Lyme epidemic.

# Significance of Lyme Pandemic as a Global Health Challenge

Number of articles on Lyme Disease, 2000-2023



**More than 14% of the world's population** probably has, or has had, tick-borne Lyme disease, as indicated by the presence of antibodies in the blood. Lyme disease affects millions worldwide, posing a significant health challenge.

**Escalating incidence** demands heightened awareness and strategic interventions. Lyme Disease diverse manifestations strain healthcare systems globally.

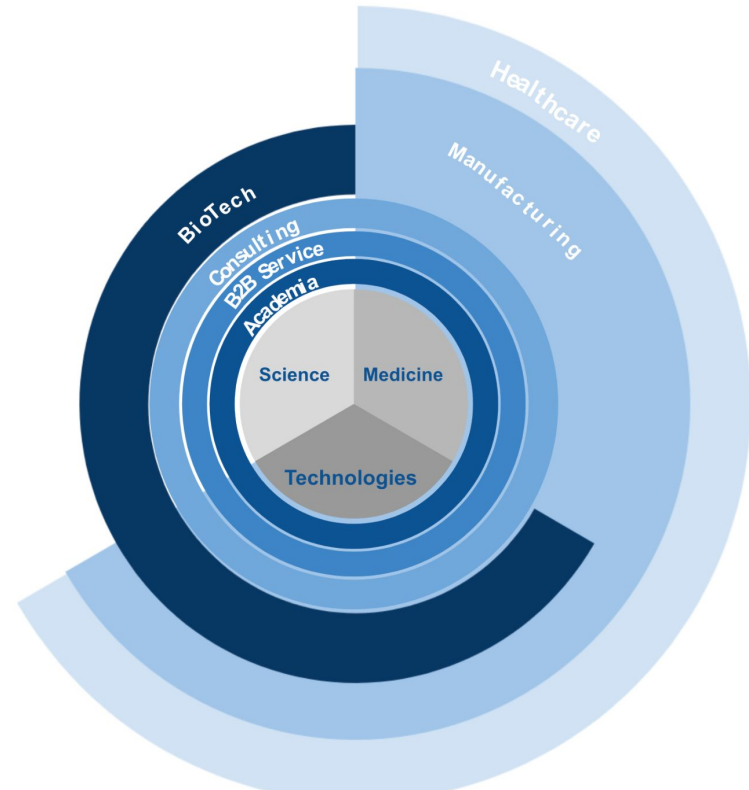
**Links to Autism and Alzheimer's** amplify the challenge. Global collaboration needed for effective prevention and management.

# Structure of the Lyme Market by Company Type

**Lyme Disease** is a chronic bacterial infection which is primarily transmitted to humans through the bite of an infected black-legged tick. The disease is named after the town of Lyme, Connecticut, where the first cases were identified in the 1970s. It is the most common vector-borne disease in the United States, with over 30,000 cases reported each year. An increase in the incidence of diabetes due to ageing, obesity, and unhealthy lifestyles is one of the factors contributing to the growth of the diabetes market, which is part of the Longevity Industry ecosystem.

Today, the **Lyme market** straddles the science, medicine, and high technology markets. Leading manufacturers and healthcare providers are focusing on technological innovations and the development of advanced products in order to gain a substantial share of the market. Lyme Technologies have significant economic potential, as evidenced by the increase in the capitalisation of the healthcare market, the market's stable growth, and the active development and improvement of technologies in this area.

Structure of the Lyme Market



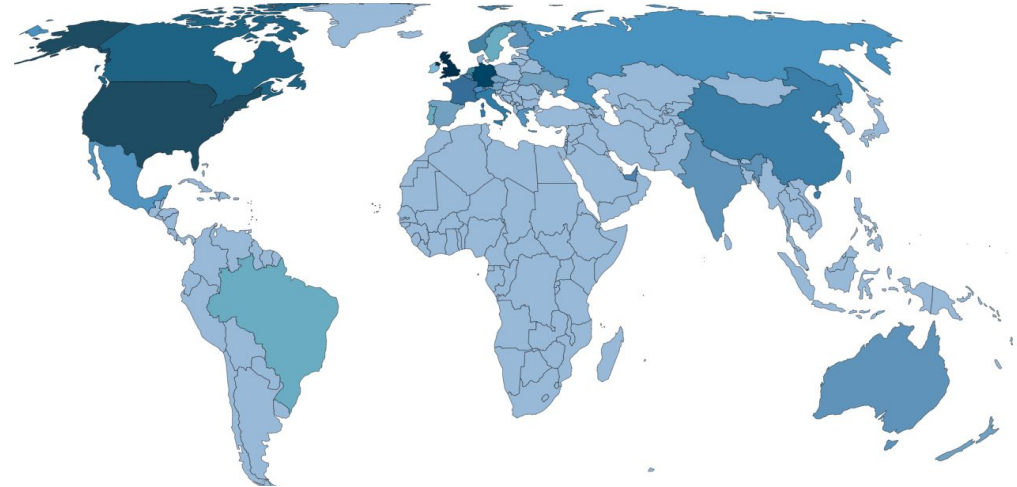
# Diagnostic and Treatments

**Lyme disease** is a bacterial infection caused by the **Borrelia burgdorferi bacterium**, primarily transmitted through the bite of **infected black-legged ticks**. Common symptoms include fever, fatigue, headache, muscle and joint aches, and swollen lymph nodes.

Diagnosing Lyme disease involves evaluating symptoms, medical history, and conducting laboratory tests. **Detection** and **Treatment** are crucial to prevent complications. Prevention strategies include using insect repellent, wearing protective clothing, and performing tick checks after outdoor activities.

The disease is prevalent in all over the World and especially in **North America, Europe, Asia and Australia and New Zealand**. Specific regions in the United States and West Europe show higher incidence. **Prompt medical attention** is essential for a full recovery from Lyme disease. Lyme disease, a prevalent bacterial infection worldwide, underscores the importance of prompt diagnosis, treatment, and preventive measures to mitigate its impact on public health.

## Global Distribution of Lyme Disease: Prevalence Map



**The Enhanced Personalized Diagnostic and Treatment Protocol** for Lyme Disease epitomizes a sophisticated and individualized approach to effectively managing Lyme disease. Beginning with patient's comprehensive medical history, and past treatments, the protocol employs a diverse diagnostic measures and a treatment approach. Moreover, proactive monitoring and support are integral components of the protocol, ensuring continuity of care and a collaborative patient-provider relationship.

# Advanced Treatments



Hyperbaric Chamber

Intensive interventions like **applied behavior analysis** or speech-language therapy may become necessary.

Individuals who experience persistent challenges post-treatment, termed post-treatment Lyme/Alzheimer's/Diabetes syndrome, might need customized therapies or additional support. To address specific symptoms or behavioral issues, certain cases may benefit from medication, such as mood stabilizers or antipsychotics.

Presently, the predominant approach in managing Lyme Disease, Alzheimer's Disease, and Diabetes involves behavioral therapies and early interventions, highly effective in the initial stages of the conditions. Alongside these interventions, **intermittent hypoxic-hyperoxic treatment** and **hyperbaric chambers** are emerging as potential adjunct therapies.

These treatments, known for their benefits in chronic diseases and aging, exhibit promise in enhancing immunity and improving overall health.



Brain Imaging



# Advanced Treatments



Plasmapheresis

**Keto and Carnivore Diets** play a pivotal role in influencing mitochondrial health and are gaining attention for their potential therapeutic impact on Lyme, Autism, Alzheimer, Diabetes diseases. This dietary approach holds promise in addressing the persistent symptoms and complications associated with the tick-borne illness.

Emerging evidence suggests that adopting these nutritional strategies may positively affect mitochondrial function, leading to enhanced energy metabolism and immune response.

**Plasmapheresis** a medical procedure involving the removal, treatment, and return of blood plasma, is being explored for its potential impact on treating Lyme, Autism, Alzheimer, Diabetes diseases. This intervention aims to address the complexities by targeting the removal of specific antibodies and immune factors. The procedure involves separating blood, extracting and treating plasma, and reintroducing it.

Research suggests potential benefits in reducing disease-related symptoms, particularly in cases where standard treatments prove less effective or involve persistent symptoms post-treatment.



Keto and Carnivore Diets

# Link between Lyme, Autism and Alzheimer

## Understanding Age-Specific and Groups Impact

### Adults

Neurological Implications, Inflammatory Response

### Kids

Maternal Transmission, Inflammatory Impact

### Seniors

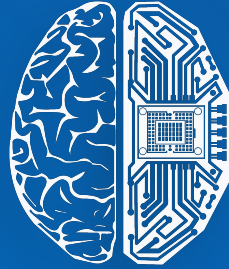
Age-Related Vulnerabilities, Inflammatory Response

### Animals

Neurological Concerns, Inflammatory Response

Lyme is a chronic health condition that manifests unique neurological implications across age groups, with notable associations to **Autism in children and Alzheimer's in seniors**. Scientific endeavors aim to unravel the molecular pathways connecting Lyme disease to the development of Autism in children and Alzheimer's in seniors. Research delves into the complexities of how Lyme-induced factors may influence neurodevelopment in children and contribute to neurodegeneration in seniors.

Lyme is a chronic health condition that manifests unique neurological implications across age groups, with notable associations to **Autism in children and Alzheimer's in seniors**. Scientific endeavors aim to unravel the molecular pathways connecting Lyme disease to the development of Autism in children and Alzheimer's in seniors. Research delves into the complexities of how Lyme-induced factors may influence neurodevelopment in children and contribute to neurodegeneration in seniors.



# Deep Knowledge Group

[www.dkv.global](http://www.dkv.global)

[info@dkv.global](mailto:info@dkv.global)