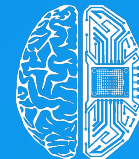




Global AI  
Ecosystem



DEEP  
KNOWLEDGE  
GROUP

# AI Industry in Wales: Landscape Overview

January, 2024

[www.ai-ecosystem.org](http://www.ai-ecosystem.org)

[www.ai-ecosystem.org/wales](http://www.ai-ecosystem.org/wales)  
[www.ai-ecosystem.org/uk](http://www.ai-ecosystem.org/uk)

# Table of Contents and Introduction

<b>Introduction</b>	<b>2</b>
<b>AI Industry Ecosystem in Wales</b>	<b>5</b>
<b>Platform</b>	<b>7</b>
<b>Main Principles</b>	<b>11</b>
The Advantages of AI Technology	12
The Benefits and Challenges of AI	13
AI in Wales Analytical Framework	14
<b>Policy and Governance</b>	<b>15</b>
<b>Summary</b>	<b>18</b>

## Introduction

As a subsidiary of Deep Knowledge Group, an international consortium known for its analytical and strategic expertise in DeepTech and Frontier Technologies, we are proud to present this publication that provides a comprehensive overview of the Artificial Intelligence (AI) landscape in Wales.

Our focus is on the pivotal role AI plays in shaping various sectors within Wales, highlighting its transformative potential and emerging as a central pillar in the nation's technological evolution. This deep-dive is especially crucial given the unique positioning of Wales in the global AI ecosystem, where it stands at a crossroads of traditional industries and burgeoning digital innovation. AI's importance in Wales cannot be overstated.

As industries worldwide pivot towards digitalization, AI emerges as a critical driver of efficiency, innovation, and economic growth. In Wales, AI's potential is highlighted against a backdrop of the region's rich history in manufacturing and its growing emphasis on tech-driven industries.

# Introduction

---

This blend of traditional and modern sectors offers a fertile ground for AI to revolutionize workflows, enhance productivity, and create new opportunities for economic development. Our analysis identifies AI as not just a tool for automation and efficiency but as a catalyst for creating new business models and transforming existing ones.

The [AI Industry in Wales platform](#) offers a unique overview of the developing AI industry, composed of profiles, mindmaps, and databases of **50 companies, 40 investors, and 5 hubs**. Their innovative approaches are contributing to the advancement of such fields as HealthTech and BioTech, AI Infrastructure, Manufacturing, Real Estate and Construction, Finance and Banking, and many other important sectors. The creation of a strong AI ecosystem in Wales depends on the cooperative efforts of businesses, governments, and hubs, which are represented on this platform. Our examination into Wales's AI landscape is informed by Deep Knowledge Group's extensive expertise in AI and its applications across various sectors. We leverage our proprietary analytical frameworks and data-driven insights to assess AI's current state, its potential impact, and the challenges and opportunities it presents. This encompasses a wide range of AI applications, from healthcare and education to finance and public services, providing a holistic view of AI's diverse implications and benefits.

One significant aspect we explore is the impact of AI on the Welsh economy. PwC's projection that AI could increase the UK's GDP by up to 10.3% by 2030, translating to an additional £232bn, underscores AI's economic significance. For Wales, this represents a tremendous opportunity to harness AI for economic revitalization and growth, particularly in areas such as advanced manufacturing, digital health, and fintech, where Wales has shown considerable strengths and potential for further development.

# Introduction

---

However, the journey towards fully realizing AI's potential in Wales is not without its challenges. A notable concern, as highlighted by businesses, is the lack of Welsh-specific data, which can lead to inaccuracies in AI translations and transcriptions. This points to a broader issue of data availability and quality, essential for training and fine-tuning AI algorithms. Addressing this will require concerted efforts from both the public and private sectors to gather and share high-quality, localized data sets.

Furthermore, our analysis reveals a gap in AI engagement, particularly among Small and Medium-sized Enterprises (SMEs) in Wales, many of which remain unengaged with AI and automation technologies. This disconnect poses a significant barrier to AI adoption and underscores the need for awareness-raising and education initiatives aimed at demystifying AI and showcasing its practical benefits.

As AI continues to advance, Wales faces both an imperative and an opportunity to integrate these technologies into its economic and social fabric. This report sets the stage for a deeper exploration of AI's role in Wales, offering insights into the strategies, policies, and initiatives that can accelerate AI adoption and maximize its benefits for Welsh society and economy.

# Artificial Intelligence Ecosystem in Wales

AI Industry in UK  
Wales  
(Beta Version)

Companies - 50  
Investors - 40  
Hubs - 5

## AI Infrastructure



## Manufacturing



## BioMed



## BuildTech



## Finance



## Other



## E-commerce



## Entertainment



View more:  
[www.ai-ecosystem.org/wales](http://www.ai-ecosystem.org/wales)

Source: [platform.dkv.global/mind-map/ai-in-wales/2520/](https://platform.dkv.global/mind-map/ai-in-wales/2520/)

# Artificial Intelligence Ecosystem in Wales

## Companies by Sector

<input type="radio"/> Data Warehousing & Management	6
<input type="radio"/> Cloud Computing & Storage Solutions	5
<input type="radio"/> Content Recommendation	3
<input type="radio"/> Predictive Maintenance	2
<input type="radio"/> Other	14



## Investors by Type

<input type="radio"/> Investor with Venture Investment Focus	27
<input type="radio"/> Investors with Large AUM (Assets Under Management)	2
<input type="radio"/> Investor with Specific Investment Approach	1
<input type="radio"/> Other	5



## Companies by Industry

<input type="radio"/> HealthTech & BioTech	2
<input type="radio"/> Retail & E-commerce	2
<input type="radio"/> Agriculture	1
<input type="radio"/> AI Infrastructure	1
<input type="radio"/> Other	4



## Companies by level of AI usage

<input type="radio"/> AI-related	26
<input type="radio"/> Partially AI-related	14
<input type="radio"/> AI-focused	10



## Investors by Location

<input type="radio"/> International Investors	35
<input type="radio"/> Wales-based Investors	5



## Hubs by Type

<input type="radio"/> Accelerators	2
<input type="radio"/> R&D Hubs	2
<input type="radio"/> Incubators	1



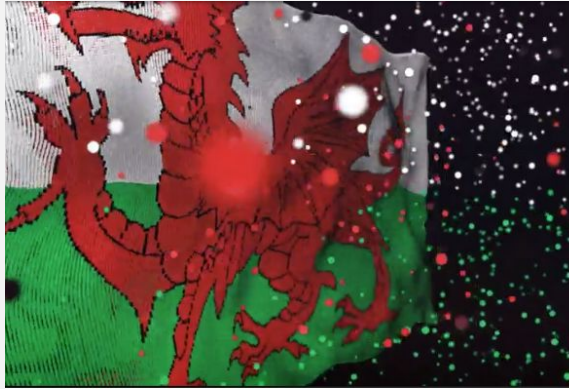
Source: [www.ai-ecosystem.org/wales](http://www.ai-ecosystem.org/wales)

# AI Industry in Wales: Landscape Overview

---

**Platform**

# Platform: AI Industry in Wales



## AI Industry in UK (Wales) Beta Version

The AI Industry in Wales platform offers a unique overview of the developing AI industry, composed of profiles, mindmaps, and databases of 50 companies, 40 investors, and 5 hubs. Their innovative approaches are contributing to the advancement of such fields as HealthTech and BioTech, AI Infrastructure, Manufacturing, Real Estate and Construction, Finance and Banking, and many other important sectors. The creation of a strong AI ecosystem in Wales depends on the cooperative efforts of businesses, governments, and hubs, which are represented on this platform.



Source: [www.ai-ecosystem.org/wales](http://www.ai-ecosystem.org/wales)



# AI in Wales Knowledge Hub (Beta Version)

## Scientific & IT Resources

10 AI Books
10 AI Journals
50 AI Articles
15 AI Benchmarks
10 AI Reports
10 AI Databases
5 AI Software
10 AI Models

## Education & Collaboration

10 Conferences in Wales
10 Workshops in Wales
20 UK Certification Programmes
10 University AI Programs
20 Online AI Courses
5 Lectures by Leaders in Wales
10 Wales Research Projects
10 Scholarship Funds in Wales

## Media & Trends

10 AI Leaders Interviews
10 Podcasts by AI experts
20 Wales Blogs
100 AI News
40 AI Social Networks
10 Market Trends in Wales
10 Diversity Trends in AI
10 Women Leading the Field

## Rankings & Top Leads

50 Wales Companies
100 Leaders in Wales
40 Investors
5 Wales Hubs
22 Wales Regions
10 Consulting Services in Wales
10 Wales Startups
5 Wales Universities

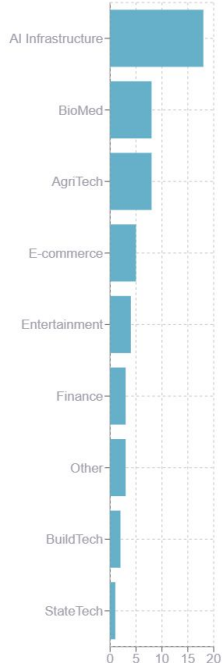
## Online Communities

80 LinkedIn
80 Facebook
40 Reddit
40 GitHub
40 Quora
40 Twitter
40 Discord
40 Other Forums

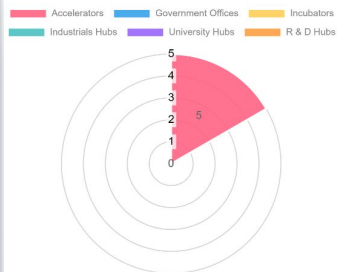
Source: [www.ai-ecosystem.org/wales](http://www.ai-ecosystem.org/wales)

# Platform: AI Industry in UK Wales

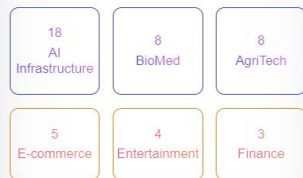
General Number of Companies in Wales



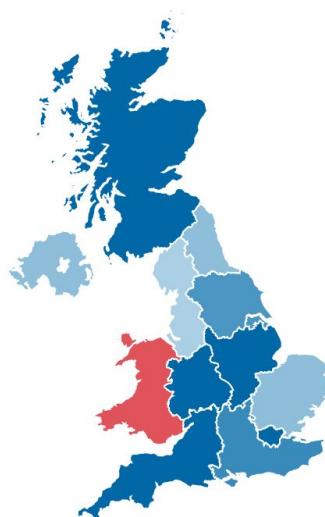
AI Hubs



Companies Distribution by Industry in Wales



Digital Map of Wales



## Key Features:

- ❑ **Company Directory:** A comprehensive directory showcasing the 50 AI companies in Wales, providing a detailed overview of their expertise, projects, and key personnel.
- ❑ **Expert Network:** A platform for AI professionals and experts to connect, collaborate, and share insights, fostering a culture of continuous learning and expertise enhancement.
- ❑ **Investor Portal:** An interface for the 40 investors interested in the Wales AI landscape, offering information on investment opportunities, trends, and success stories.
- ❑ **AI Hub Collaboration:** Facilitate communication and collaboration among the 5 AI hubs in Wales, serving as a catalyst for joint projects, research initiatives, and knowledge exchange.

Source: [www.ai-ecosystem.org/wales](http://www.ai-ecosystem.org/wales)

# Artificial Intelligence Industry Overview

---

Main Principles

# The Advantages of Artificial Intelligence Technology

## 5 Common Features of Artificial Intelligence

### Learning & Adaptation

AI systems have the ability to learn from data and adapt their behavior over time. This learning process can occur through various techniques, such as machine learning, where algorithms analyze patterns in data and adjust their models to improve performance.

### Problem Solving

AI is designed to solve complex problems by processing and analyzing large amounts of data. This involves making decisions, drawing conclusions, and generating solutions based on the information available to the system. Problem-solving in AI can range from simple tasks to highly intricate and specialized domains.

### Automation

One of the primary goals of AI is to automate tasks that traditionally require human intelligence. This can include routine and repetitive activities, as well as more complex tasks such as decision-making, problem-solving, and natural language understanding.

### Perception and Interaction

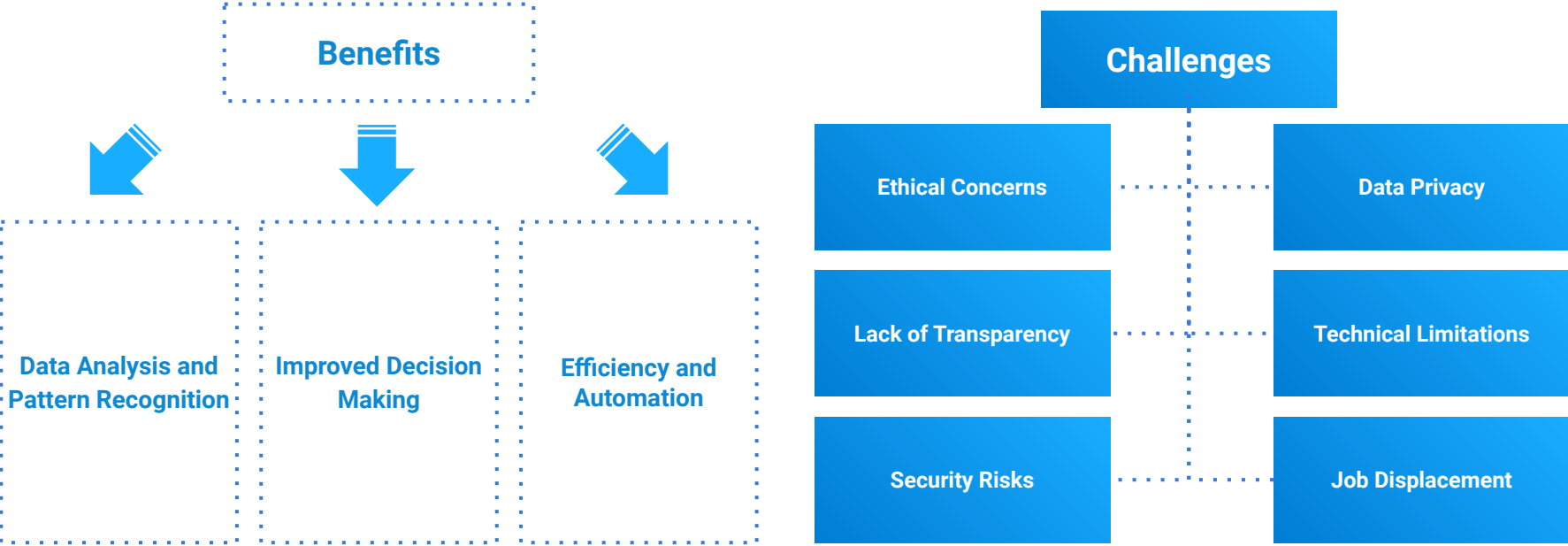
AI systems often incorporate capabilities related to perception and interaction with the environment. This can involve computer vision for image and video analysis, speech recognition for understanding spoken language, and natural language processing for comprehending and generating human language.

### Adherence to Instructions

AI systems follow instructions or algorithms to perform specific tasks. The ability of AI to execute tasks based on instructions is a fundamental characteristic, whether it's in the form of rule-based systems, expert systems, or more advanced machine learning models.

# The Benefits and Challenges of Artificial Intelligence

Artificial Intelligence (AI) brings a host of benefits, driving efficiency, automation, data analysis, and personalized experiences across industries. It enhances decision-making processes, improves safety and security measures, and fosters innovation. However, AI adoption is accompanied by significant challenges. Ethical considerations, such as privacy and bias concerns, require careful attention. The lack of transparency in AI decision-making, security risks, data privacy issues, and technical limitations pose additional hurdles.



# Artificial Intelligence in Wales Analytical Framework

## AI Infrastructure

Building robust systems to support AI workloads, optimize hardware, scalable cloud solutions, efficient data storage

## SocialTech

Applications range from sentiment analysis for community well-being to AI-driven solutions addressing social challenges

## BuildTech

Integrates AI in construction and real estate. Enhances project management with predictive analytics, accelerates design processes

## Entertainment

Enhances user experiences. Content recommendation algorithms deep learning creates realistic animations, and chatbots engage audiences, shaping a dynamic and immersive entertainment

## E-commerce

AI Optimizes business and customer experience. Algorithms provide detailed customer behavior analysis, augmented reality technologies, supplier management and many more

## Finance

AI revolutionizes operations. From algorithmic trading and fraud detection to personalized financial advice, AI enhances efficiency, minimizes risks, and provides insights for decision-making

## Biomed

AI accelerates healthcare innovation. It aids in drug discovery, interprets medical images for diagnosis, and personalizes treatment plans through predictive analytics, ushering in a new era of precision medicine

# AI Industry in Wales: Landscape Overview

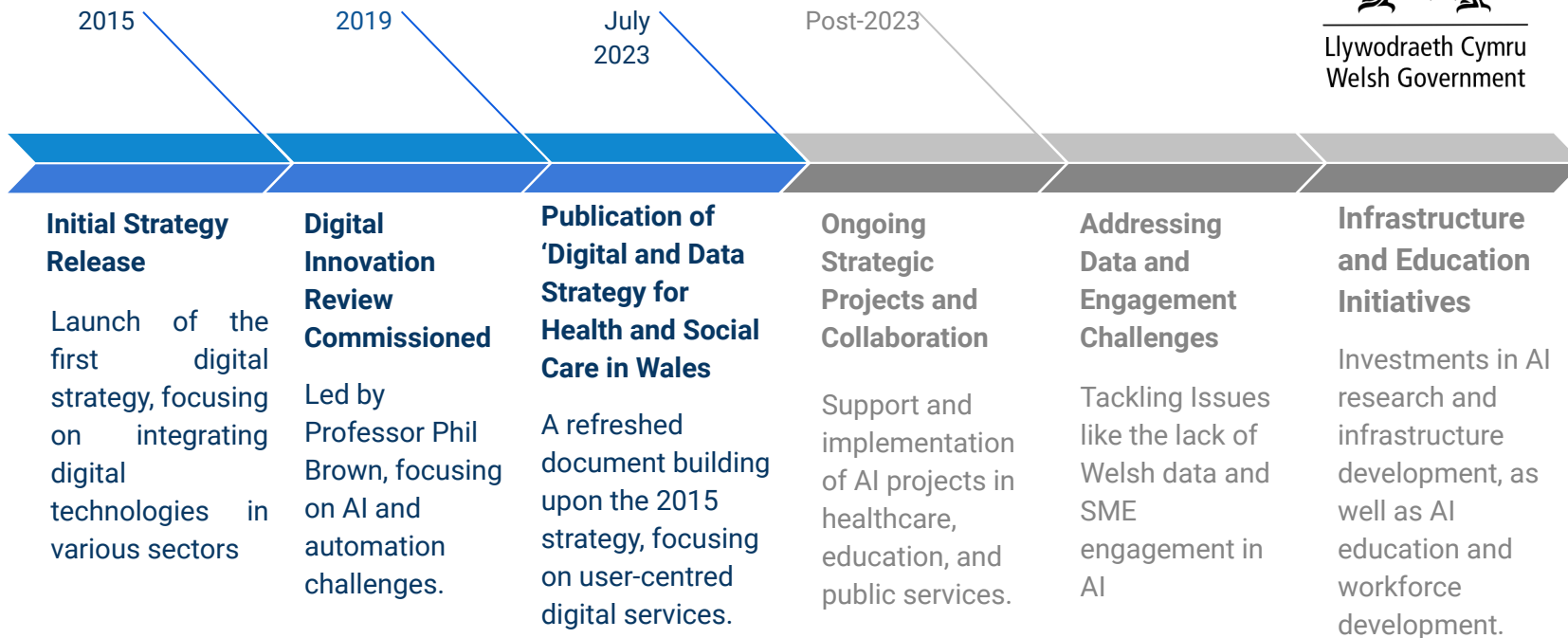
---

Policy and Governance

# AI Policy Development in Wales



Llywodraeth Cymru  
Welsh Government





# AI Policy and Governance: Challenges and Opportunities

## 3 AI Policy Challenges

### Data Accessibility and Quality

Limited availability of high-quality, localized Welsh data for AI applications. This impacts the accuracy and effectiveness of AI solutions tailored to the unique needs and demographics of Wales.

### Engagement with Automation and AI

A significant portion of SMEs in Wales remain unengaged with the automation agenda. This lack of engagement extends to the public sector, indicating a need for increased awareness and understanding of the benefits of AI and automation.

### Skills and Talent Development

There is a need to ensure the education system supports life-long learning and adapts to the evolving requirements of AI and data science. Addressing the current skills gap is essential for developing a workforce capable of meeting the demands of an AI-driven economy.

## 3 AI Policy Opportunities

### Leveraging Unique Data Assets

E.g. The Data Nation Accelerator initiative focuses on utilizing Wales' unique data assets for societal, health, and economic impact. By cocreating with various sectors, it aims to provide opportunities in public services health, and environmental management.

### Cross-Sector Collaboration and Co-Creation

Collaborations across private, public, and third-sector organizations, including the Welsh Government, can drive the development of AI applications. This collaborative approach allows for the creation of AI solutions that are more aligned with local needs and conditions, enhancing their effectiveness and acceptance.

### Investment in AI Education and Training

Collaborations across private, public, and third-sector organizations, including the Welsh Government, can drive the development of AI applications. This collaborative approach allows for the creation of AI solutions that are more aligned with local needs and conditions, enhancing their effectiveness and acceptance.

# AI Industry in Wales: Landscape Overview

---

## Summary

# Obstacles to AI Adoption in Wales

SMEs largely disengaged from the automation agenda. Limited Awareness in Public Sector: Automation not a priority in public sector operations. Can be solved by targeted AI awareness Campaigns. Initiate sector-specific awareness programs for SMEs about AI benefits.

**Lack of  
Engagement  
Among SMEs**

**Limited  
Awareness in  
Public Sector**

Absence of continuous learning infrastructure for evolving AI technologies. Can be solved with lifelong learning platforms. Establish AI and tech-focused continuous learning systems in education.

**Inadequate  
Lifelong  
Learning  
Systems**

**Unutilized  
Local Expertise**

Automation not a priority in public sector operations. This can be solved by implementing AI-focused transformation initiatives in public services.

Failure to leverage Wales' world-leading experts in AI and automation. Can be solved with a comprehensive expertise utilization strategy: Develop strategies to employ local AI expertise in industry and academia.

# AI Policy and Governance in Wales: Unique Obstacles

## Obstacles to Adoption

### Insufficient Welsh Language Data for AI Development

The development and accuracy of AI systems in Wales are hindered by a scarcity of Welsh language data. AI technologies, including chatbots and translation services, require extensive datasets to improve their accuracy and functionality. The current lack of sufficient Welsh language data limits the potential and efficiency of these AI applications.

### Limited Engagement with Automation Among SMEs and Public Sector

A significant barrier to AI adoption in Wales is the lack of engagement with the automation agenda, particularly among SMEs (Small and Medium-sized Enterprises) and within the public sector. This apathy towards automation and AI integration suggests a broader unawareness or reluctance to embrace these technologies.

## Solutions

### Building Collaborative Data Repositories

In line with Deep Knowledge Group's focus on data-driven solutions, establishing collaborative data repositories for the Welsh language could be highly beneficial. These repositories would gather and provide access to extensive Welsh language datasets, aiding in the training and development of more accurate AI models.

### Enhanced Awareness and Education Programs

To address the disengagement with automation and AI, targeted awareness and educational programs should be implemented. These programs could focus on the benefits of AI and automation, particularly for SMEs and public sector entities. The initiative could include workshops, seminars, and online resources, highlighting the practical applications and advantages of AI in various sectors.

# Key Takeaways

---



**Welsh AI Ecosystem's Growth:** Wales is witnessing a notable evolution in its AI ecosystem, with significant advancements in both the private and public sectors, notably in healthcare and technology.

---



**AI's Economic Impact:** AI presents a substantial opportunity for economic revitalization in Wales, especially in advanced manufacturing, digital health, and fintech sectors, aligning with global trends towards digitalization.

---



**Data Challenges and Solutions:** A key hurdle in AI development in Wales is the lack of Welsh-specific data. Collaborative efforts to gather and share high-quality localized data sets are crucial for the accuracy and effectiveness of AI applications.

# Key Takeaways

---



**Engagement and Education:** Addressing the gap in AI engagement, particularly among SMEs and in the public sector, is imperative. Targeted awareness and educational programs can demystify AI and demonstrate its practical benefits.

---



**Engagement and Education:** Addressing the gap in AI engagement, particularly among SMEs and in the public sector, is imperative. Targeted awareness and educational programs can demystify AI and demonstrate its practical benefits.

---



**Policy and Governance Evolution:** 2023 marked significant strides in AI policy development, focusing on skills, partnerships, and digital platforms. The Welsh Government's updated strategies emphasize user-centered digital services and partnership-driven innovation in AI.

# Key Takeaways

---



**Sector-Specific AI Applications:** AI's potential spans diverse sectors in Wales, from healthcare to finance. Its integration is revolutionizing workflows, enhancing productivity, and fostering new business models.

---



**Challenges to AI Adoption:** Apart from data challenges, other obstacles include limited public sector awareness, inadequate lifelong learning systems, and unutilized local expertise. Addressing these through strategic initiatives is essential for AI adoption.

---



**Opportunities for Strategic Collaboration:** The development of AI in Wales depends on the cooperative efforts of businesses, government, and educational institutions, highlighting the need for cross-sector collaboration and co-creation.



Global AI Ecosystem

[www.ai-ecosystem.org](http://www.ai-ecosystem.org)

[info@ai-ecosystem.org](mailto:info@ai-ecosystem.org)

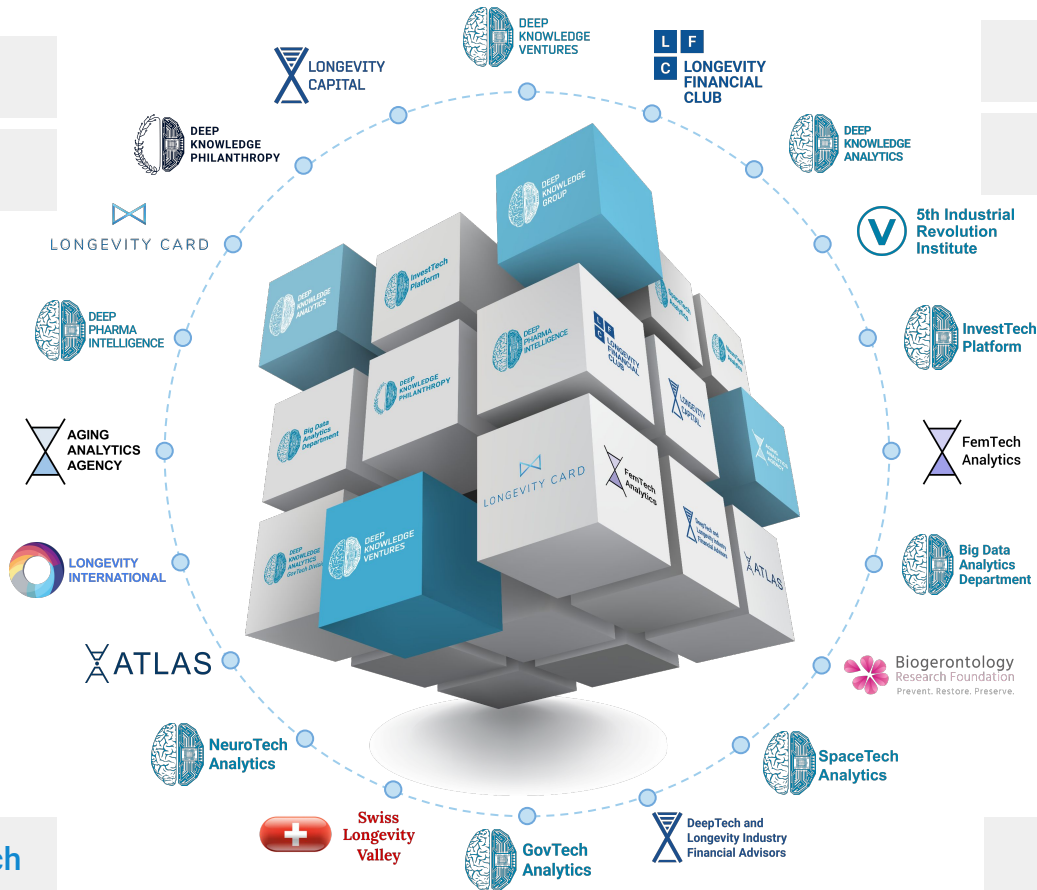
# Deep Knowledge Group



AI Industry Analytics

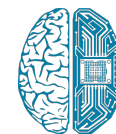
[www.aiia.tech](http://www.aiia.tech)

[info@aiia.tech](mailto:info@aiia.tech)



DEEP KNOWLEDGE GROUP

[www.deep-innovation.tech](http://www.deep-innovation.tech)



DEEP KNOWLEDGE VENTURES

[www.dkv.global](http://www.dkv.global)