

DEEP
KNOWLEDGE
GROUP



LONGEVITY
INDUSTRY
ANALYTICS

Global Medical Clinics

Big Data Analytical System and Dashboard

Teaser

*White Label Solution for Longevity, Precision
and Preventive Medicine Clinic Analytics*

Strictly Confidential

www.aginganalytics.com/gmc

Proposal Overview

AI-Driven Big Data Analytics System for Deep Competitive Analysis and Market Intelligence on 12,000 Medical Clinics

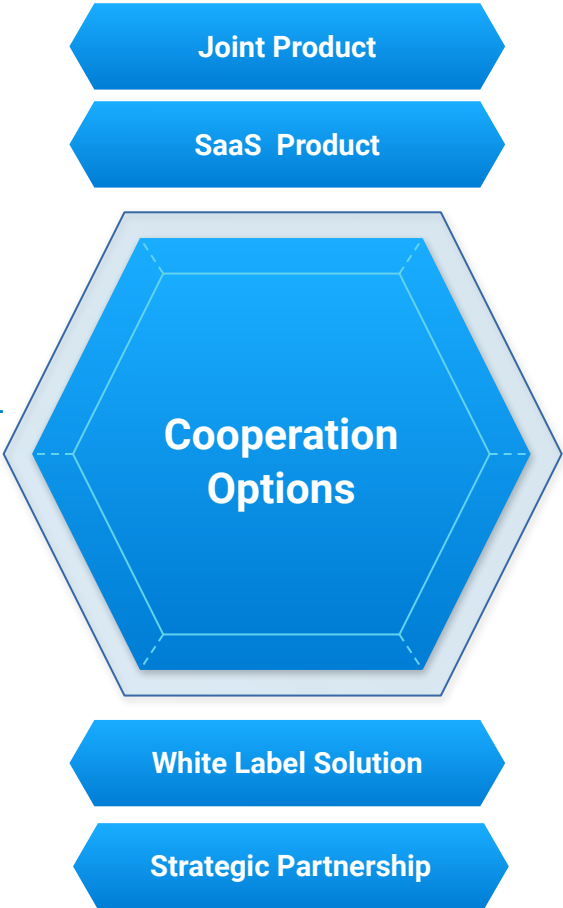
Options for Customized Dashboard Creation to Meet Specific Needs of Clients with Additional Dedicated Tech Components

AI Co-Pilot to Automatically Translate Global Medical Clinics Dashboard Insights into Practical Strategic Recommendations

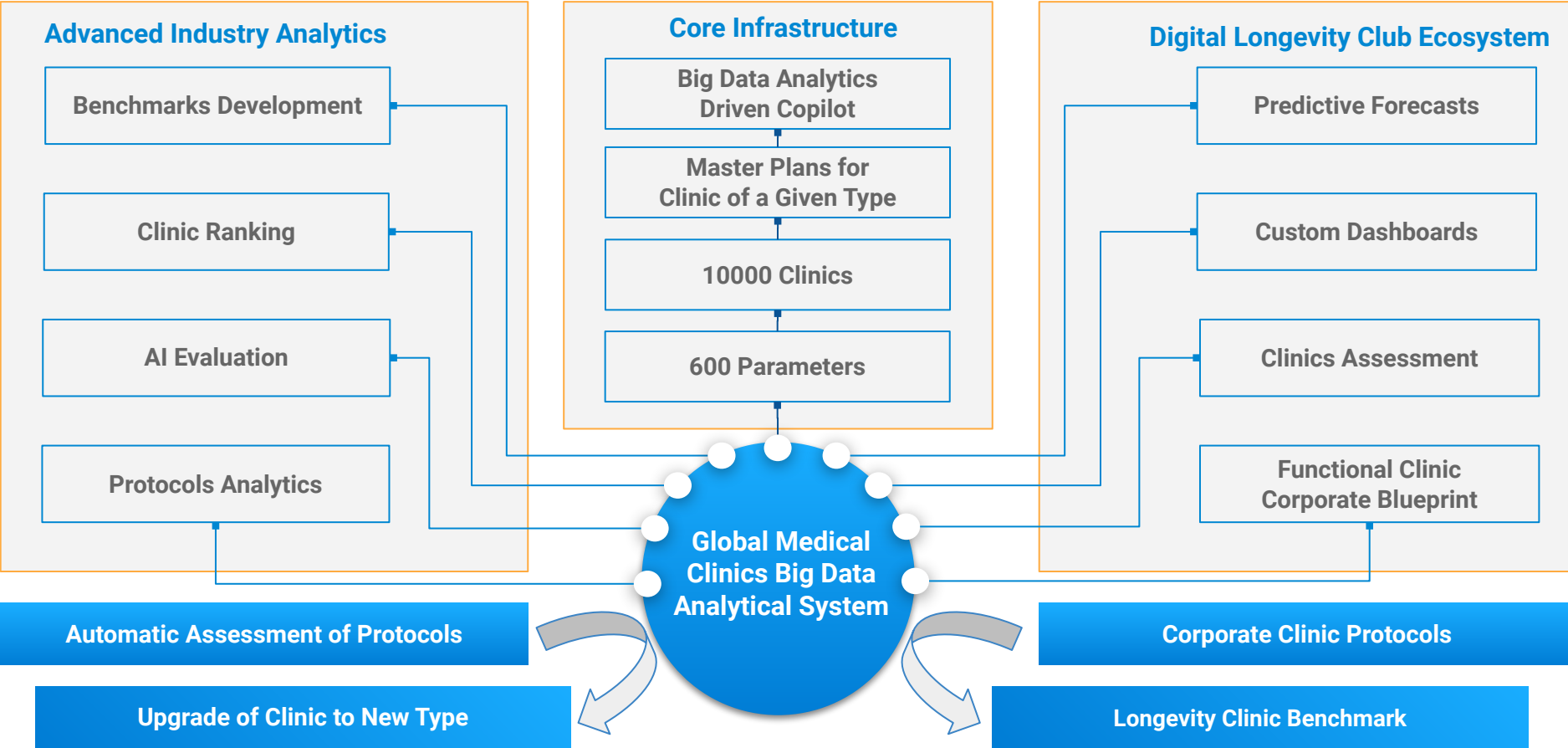
Options for Standard Dashboard Subscription, Custom White Label Solution, and SaaS-Based Access to Select Components

Sophisticated Engagement Relations Management System (ERM) to Enhance Business Marketing and Client Relations

Longevity Clinic Corporate Blueprints: Recommended Clinical Pipeline and Protocols for the Ideal Longevity Clinic

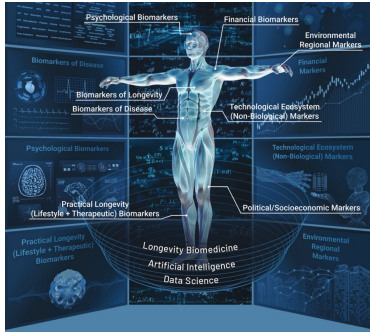


Global Medical Clinics Big Data Analytics System and Dashboard Components



Component 1

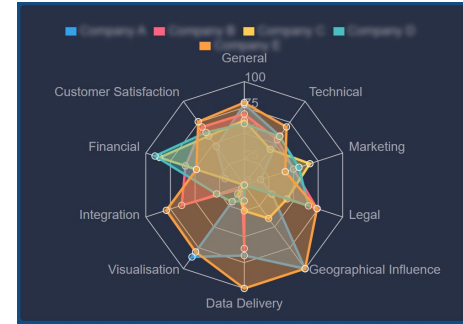
Each proposition is tailored for specific client needs and is fine tuned to according to their desired outcomes. As the scope of system functionality and types of analysis can be modified based on client specifications, cooperation terms and conditions are negotiable.



Hybrid Solution (AI-Driven Digital Second Layer to Clinic Infrastructure)

- Data-driven augmented tool for Clinic AI Support augmentation and sophisticated clinic roadmap development
- Enables data-driven clinic development using augmented intelligence (Clinic Owners / Decision Makers + AI Agents + Big Data Analytics Market Intelligence Systems)
- Enables clinics to capture the activity and attention of their clients outside the clinic, and offer them in-brand ways to optimize Health and Longevity at home and on the go

Component 2



AI-driven Smart Matching System and Business Intelligence Engine for Head Hunting

- Automated data collection for top doctors, practitioners and potential clinic staff
- SWOT analysis and benchmarking of individual Clinic Doctors across Longevity, Precision Medicine and Narrow Specialties
- Semi-automated engagement strategies for outreach
- Easily integrated IT panel for streamlined operations
- Customization options to cater to specific clinics needs
- Semi-automated recommendations for aggressive and proactive top talent acquisition and retainment

Initial Proposal for Cooperation

Longevity Industry Analytics is dedicated to equipping advanced clinics with a specialized suite of AI-driven analytics and visualization tools as an **ideal add on** and **second digital, virtual IT and AI-enhanced layer** for existing advanced clinics (Longevity, Precision Health, Preventive Medicine, and other specialty services). More and more people are seeking to optimize their Health, Wellness and Longevity outside of the clinic rather than within it, and we offer leading clinics the infrastructure to capture that activity, and address that user desire, within the umbrella of their own branding.

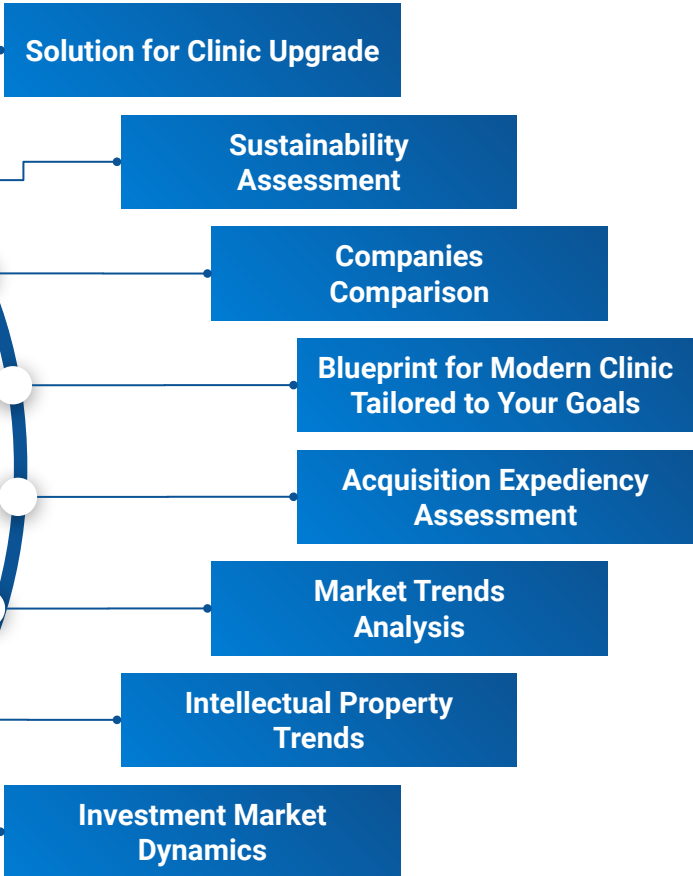
Our product and service suite also encompass structured recommendations on how to optimize and modernize existing physical clinical pipelines and protocols according to data-driven ecosystem analysis and market intelligence, enabling clinics to adopt best practices, monitor and on-board innovations, and adapt to competitors. But our major specialty is in offering clinics a suite of tools (market intelligence dashboards, AI Co-Pilots, Engagement Relations Management Systems) that **serve as a seamless second virtual layer on top of their existing practices and facilities**, to capture the clients activities and attention outside the clinic, and enable them to maximize their Health, Wellness and Longevity at home and on-the-go all within their favorite clinic's existing brand umbrella.

Our comprehensive portfolio supports a broad spectrum of needs, from boosting operational efficiency to unlocking profound strategic insights, ensuring access to the forefront of technological advancements, and unparalleled market intelligence on the Global Medical Clinics Industry. We offer a suite of collaboration opportunities to enhance existing systems or undertake new initiatives.

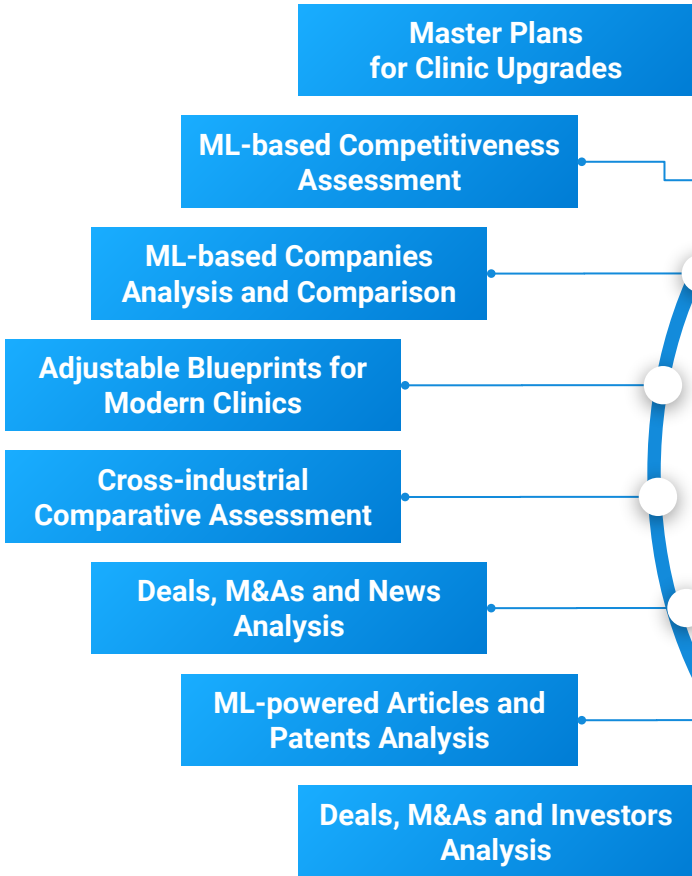
Our commitment is to forge impactful collaborations by providing an extensive toolkit and our deep expertise, all directed towards delivering significant outcomes. We are flexible in our approach to partnerships, ready to explore various collaborative models that promise to deliver substantial value and drive industry leadership for our Medical Clinics partners.

Proposition Summary: Your Needs and Our Solutions

Your Needs



Our Solutions



Component 3

Each proposition is tailored for specific client needs and is fine tuned to according to their desired outcomes. As the scope of system functionality and types of analysis can be modified based on client specifications, cooperation terms and conditions are negotiable.



Global Medical Clinics Dashboard

- Aggregated data from 12,000+ medicine clinics
- Provides market intelligence tools and analytics
- User-friendly interface with customizable reporting
- Real-time updated for timely decision-making
- Robust security measure ensure data confidentiality
- Supports strategic decision-making with actionable insights

Component 4



Executive AI-Copilot (Dashboard Add-On)

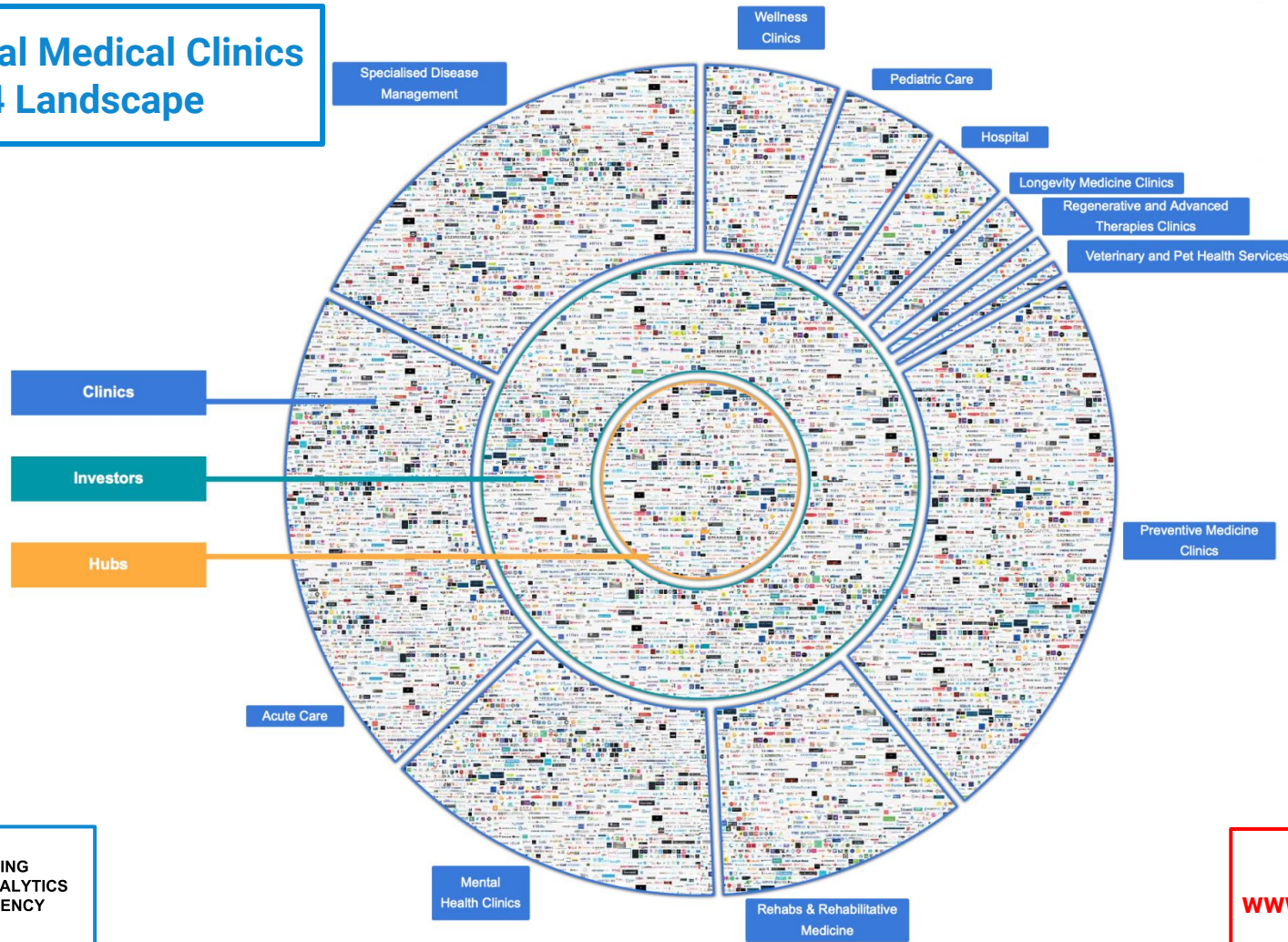
- Drives decision-making with powerful data insights
- Delivers actionable insights through advanced data analytics
- Maximizes big data's impact on market intelligence
- Maximizes data warehouse solutions for storage efficiency
- Utilizes machine learning algorithms for predictive analysis
- Implements interactive dashboard for visual data exploration

Global Medical Clinics Industry Big Data Analytics System



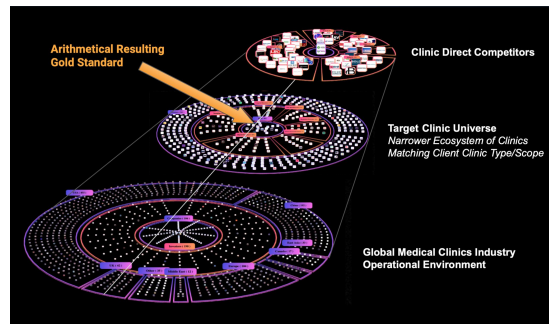
Global Medical Clinics 2024 Landscape

Clinics – 9,100
Investors – 1,000
R&D Hubs – 120

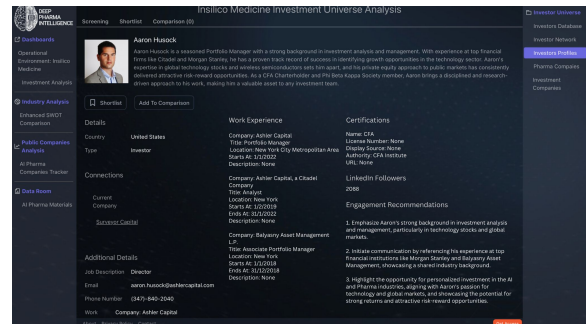


Further Dashboard Development: Q4 2024 - Q1 2025 Schedule of Added Features

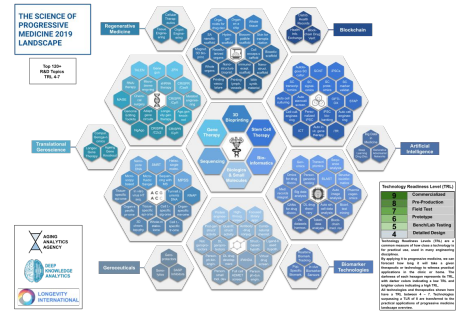
Database Expansion (50k Clinics, 15k Personalities)



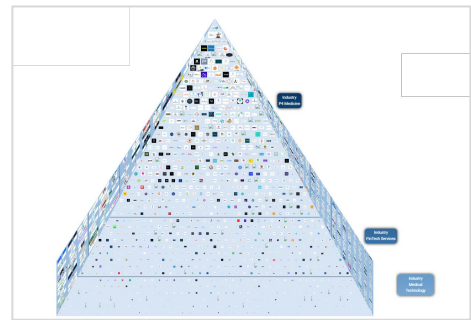
Personalized Protocol-Specific MD and Specialist Headhunting



Clinic Pipeline Constructor (Modular Assembly of Protocols and Equipment)



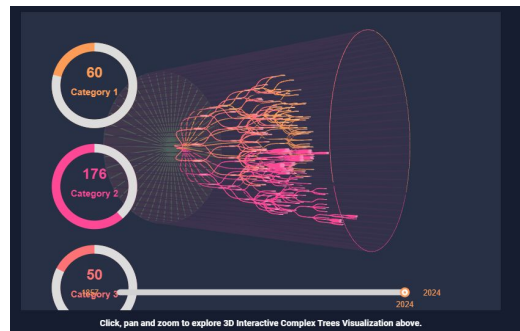
Expansion of Benchmarks: Protocols, Pipelines, MDs, Specialized Clinics



Expanded Diversity of Clinic Types: Disease-Specific, Pets, Performance



Clinic Forecasting (Future Competitors Prediction)



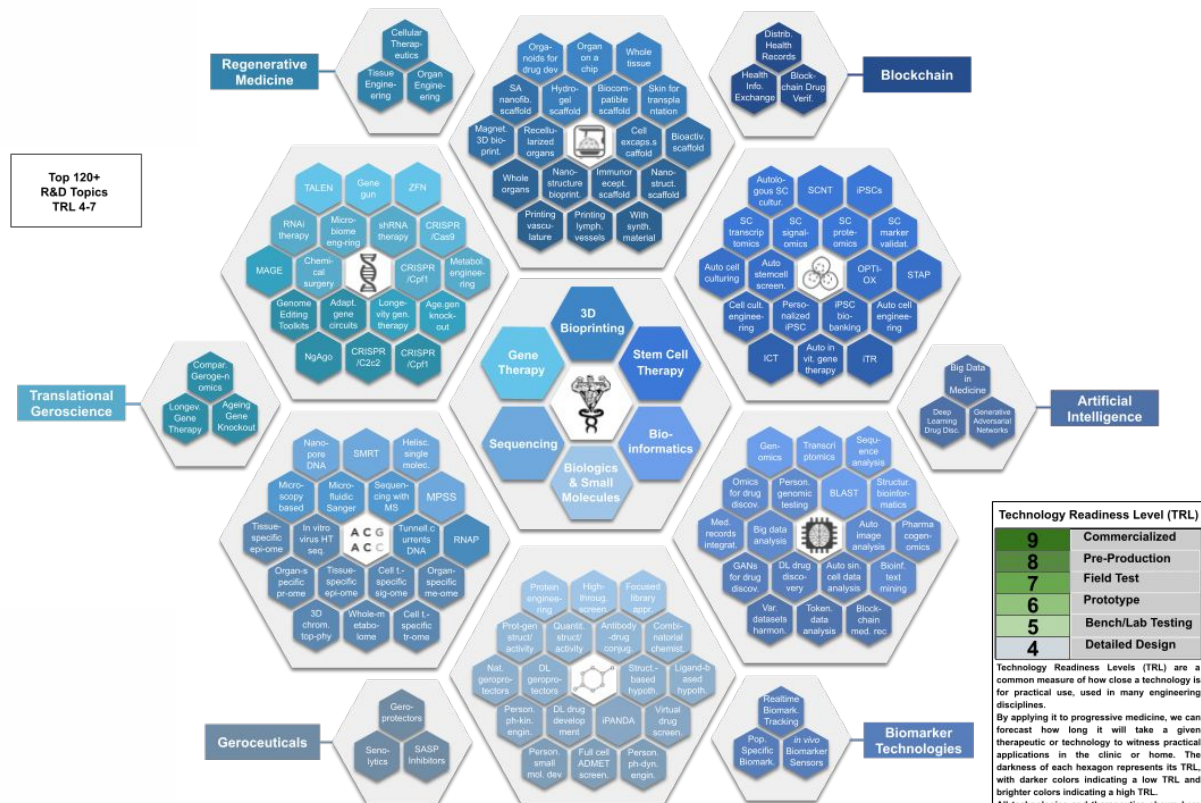
Global Medical Clinics Dashboard Overview

We specialize in the development of Custom Big Data Analytics Dashboards, a service designed to cater to the unique needs of the Medical Clinics Industry. This offering is aimed at crafting highly personalized analytical dashboards that provide deep insights into specific, disruptive topics within the specific therapeutic niches of our medical clinic clients, leveraging advanced analytics tools and comprehensive data sets.

Market Analysis and Competitor Analysis as Analytical Dashboard

- **Collaborative Development Approach:** We champion a collaborative model, working closely with clients to co-create dashboards that are meticulously tailored to illuminate disruptive and innovative topics in the Medical Clinics sector.
- **Advanced Analytics Integration:** Incorporating sophisticated analytical capabilities, including AI-driven market analysis, predictive modeling, and competitor analysis, to deliver rich, actionable insights.
- **Expert Support and Knowledge Sharing:** Provides continuous expert support, sharing our extensive knowledge base and analytics expertise to ensure the dashboard's ongoing relevance and effectiveness in a rapidly evolving market.
- **Tailored Market Insights:** Each custom dashboard is designed to offer comprehensive market overviews, detailed sector assessments, competitive landscapes, and predictive insights, all personalized to meet the client's specific analytical needs.
- **Dynamic and Adaptable Platform:** Recognizing the dynamic nature of the Longevity, Precision Health and Preventive Medicine Clinics industries, our dashboards are built to be flexible and responsive, capable of adapting to new data, trends, and client requirements over time.

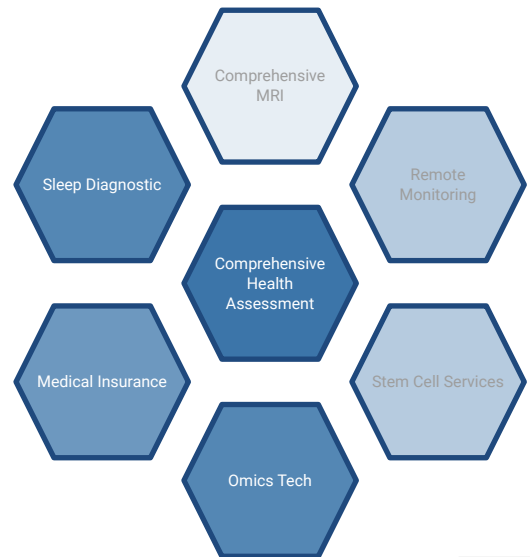
Complex Technology Readiness Level (TRL) Assessment of Clinic Pipeline



Top 120+ R&D Topics TRL 4-7

Technology Readiness Level (TRL) scoring is a measure of overall market readiness from 1 (highly conceptual) to 9 (already commercialized on the market)

Precision Medicine Clinic Pipeline Benchmarking

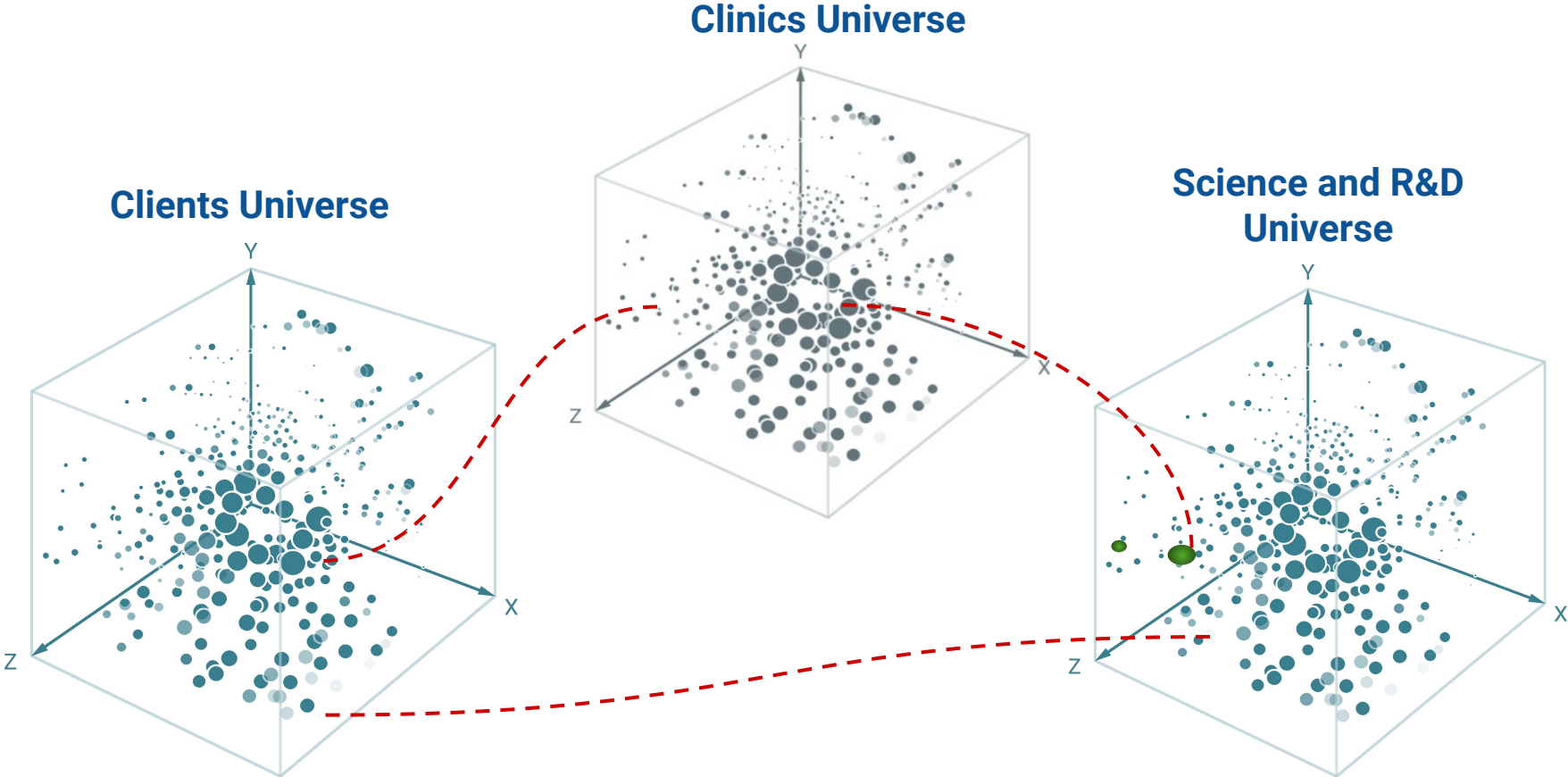


Technology Readiness Level (TRL)

9	Commercialized
8	Pre-Production
7	Field Test
6	Prototype
5	Bench/Lab Testing
4	Detailed Design

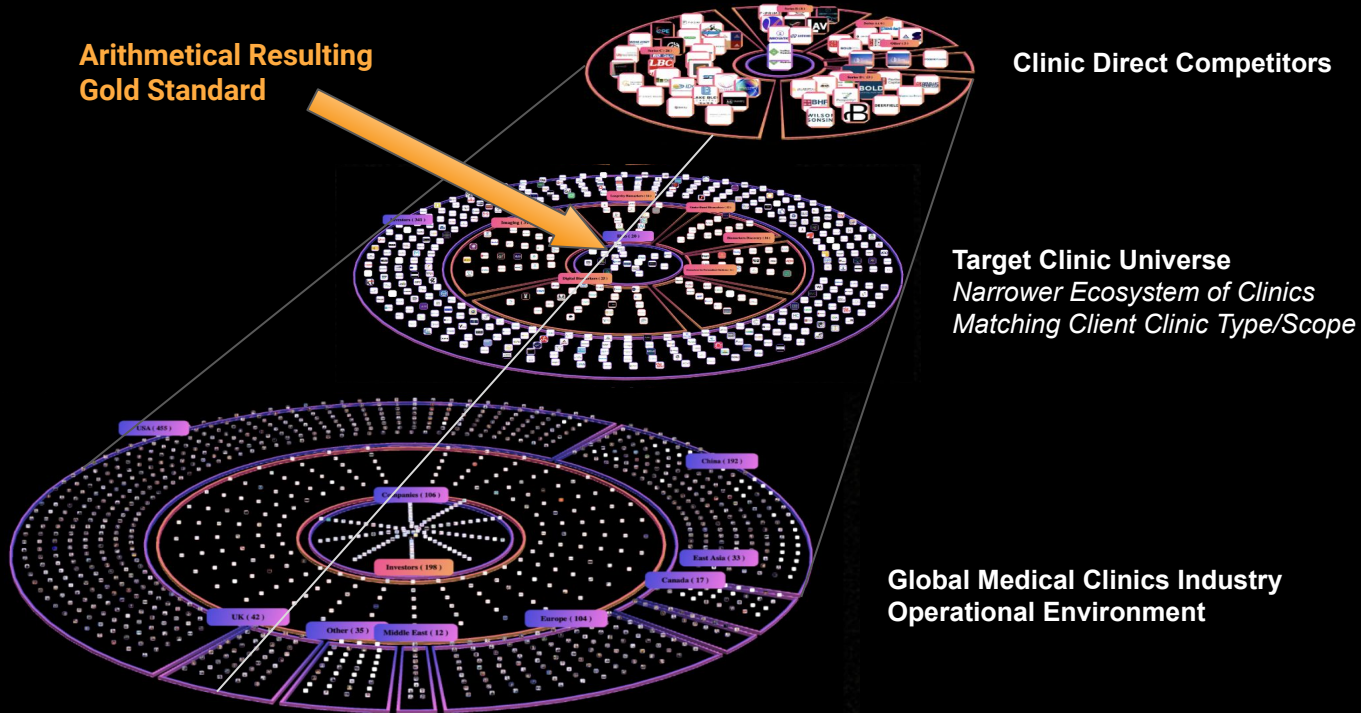
Technology Readiness Levels (TRL) are a common measure of how close a technology is for practical use, used in many engineering disciplines. By applying it to progressive medicine, we can forecast how long it will take a given therapeutic or technology to witness practical applications in the clinic or home. The darkness of each hexagon represents its TRL, with darker colors indicating a low TRL and brighter colors indicating a high TRL. All technologies and therapeutics shown here have a TRL between 4 - 7. Technologies surpassing a TLR of 8 are transferred to the practical applications of progressive medicine landscape overview.

Automated Business Development, Partnerships Facilitation Matching System



Mapping Clinic Synthetic Operational Environment

Arithmetical Resulting Gold Standard

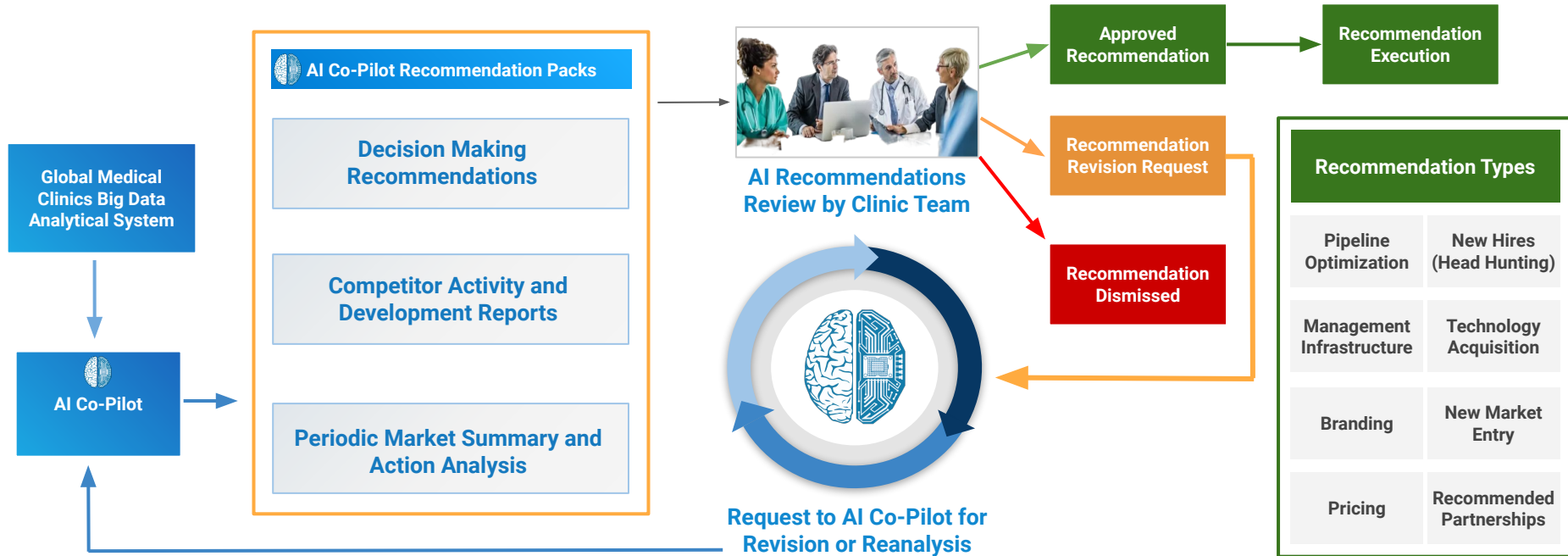


A targeted, qualified shortlist of clinic competitors is obtained by first mapping the full operation environment of the Global Medical Clinics Industry, and then filtering the subset of clinics that match the client according to clinical type and scope.

Narrow targeting then enables identification of the direct competitors of the clinic; however, parallel analysis of the full Global Medical Clinics industry also enables identification of gold standards and best practices both from similar and dissimilar clinics (e.g., obtaining clinical pipeline adjustment recommendations from related clinics but marketing strategy from gold-standard global clinics).

AI Augmentation Medical Clinic Intelligence: Doctor + AI Hybrid Synergy

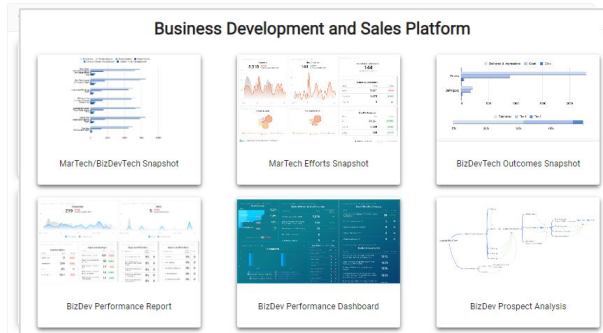
Longevity Club's AI-augmented hybrid solution is designed to provide both doctors (clinic practitioners) and executives (clinic owners and decision makers) with an end-to-end hybrid solution to augment and enhance their strategic and day-to-day operations.



The system serves both as a virtual second layer to clinic services by clients, as well as a data-driven AI recommendation system to optimize clinic operations according to monitoring and analysis of the global medical clinics industry landscape.

Component 5

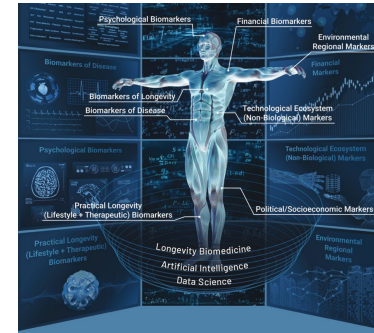
Each proposition is tailored for specific client needs and is fine tuned to according to their desired outcomes. As the scope of system functionality and types of analysis can be modified based on client specifications, cooperation terms and conditions are negotiable.



Automated Business Development, Partnerships Facilitation, AI-driven Smart Matching System

- Automated data collection for competitors, clients, and potential partners
- Scanning of the operational environment for business opportunities
- Semi-automated engagement strategies for outreach
- Easily integrated IT panel for streamlined operations
- Customization options to cater to industry-specific requirements

Component 6



Clinic Corporate Blueprint (Recommendation System to Construct Ideal Clinical Pipeline)

- Recommendations on ideal Longevity clinical pipeline development, applying best practices from top clinics and avoiding worst practices from lowest-ranking clinics based on comprehensive analysis of Longevity Clinics globally
- Adjustment of ideal Longevity Clinic protocol according to existing clinic infrastructure
- Adjustment to clinic specifications (range of price options and optimization of cost vs. outcome to maximize clinic ROI)

Forms of Proposed Cooperation

Longevity Industry Analytics offers a comprehensive toolkit tailored for professionals in the global medical clinics sector, focusing on healthcare analytics and broader market insights. We are enthusiastic about exploring collaborative opportunities that align with the specific operational requirements and strategic ambitions of our partners. Our collaboration models are designed to accommodate various needs.

All individual components described in the present proposal can be made available according to the following three formats:

White Label Solution

- Customized white-label solution in form of **Platform, Dashboard or separate tools**.
- Flexible data tools for **adaptive market analysis**.
- **Cutting-edge 3D visualizations** for enhanced user experience.
- Focus on chosen metrics, **optimizing resource allocation**.

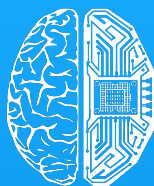
Standard Subscription

- **Subscribe** to access the Global Medical Clinics Big Data Analytics System and Dashboard to gain access to the full scope of standard components.
- Save on tailored development costs and enjoy access to leading analytics on the Global Medical Clinics industry.

SaaS Solution

- Subscribe for our tools to integrate them into **your workflow**.
- Leverage subscription focus on M&A for **valuable decision-making insights**.
- **Optimize strategic planning** by streamlining research allocation through targeted analytics.

We are open to a mutually beneficial cooperation



DEEP
KNOWLEDGE
GROUP

www.dkv.global

info@dkv.global



LONGEVITY
INDUSTRY
ANALYTICS

www.aginganalytics.com

info@aginganalytics.com

Longevity Industry Analytics

100 Bishopsgate, London, UK
