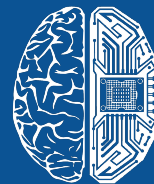




LONGEVITY CLUB



DEEP
KNOWLEDGE
GROUP

Longevity Clinics and Services at Harley Street

Q2 2024

Table of Contents

Introduction	2
Report Methodology and Approach	3
Executive Summary	5
General Overview	8
Longevity Industry Overview	9
Hallmarks of Ageing	11
Concept of Longevity Medicine	13
Longevity Check-Up Benefits to Health	18
Concept of Longevity Check-Up	19
Longevity Health Check Programme	20
Longevity Check-Up Process	22
Longevity Clinics on Harley Street	28
Methodology for Selecting Longevity Clinics	30
Comparative Analysis	31
Advanced Technologies for Diagnostic in Longevity Clinics	33
Clinic Profiles	34
Additional Longevity Services on Harley Street	58
Levels and List of Additional Longevity Services	60
Harley Street Longevity Club	73
Conclusions	87
Disclaimer	89

This analytical case study provides **a comprehensive overview of the Longevity Clinics and Longevity Services on Harley Street.**

In order to help humanity reach maximum Longevity, nowadays, medicine has established a relatively new branch - Longevity Medicine. Longevity Medicine is a Smart Precision Medicine based on Longevity Biomarkers that serves to prolong active Longevity and maintain optimal functioning of the body throughout life.

Longevity Clinics and Services on Harley Street Q2 2024 mainly focuses on an in-depth analysis of **the Top-12 Longevity and Precision Clinics where customer can mace longevity diagnostic and treatments on Harley Street** and exhibits a **detailed SWOT analysis of Longevity Check-Up** proposed by these clinics. The separate chapter of the report is devoted to the overview of a recommended set of **additional longevity services**. The Longevity Check-Up approaches are characterised by **precise diagnostic methods, personalisation, selection of individual health plans, and preventive means** suitable for the body's biochemical, physiological, and genetic characteristics. This analytical case study contains valuable and practical information, describing the most up-to-date Longevity services, that are being implemented into Longevity Medicine these days.

Report Methodology and Approach

Database

20	Clinics with Longevity services	45	Additional Longevity Services
----	---------------------------------	----	-------------------------------

The database was formed based on:

- the **identification of Longevity Clinics** which offer a full set of services for prolong life (according to a specially developed methodology)
- the **determination of additional longevity services** in hospitals, clinics, diagnostics centres, laboratories which offer the same facilities as Longevity Clinics, but not in a package

Applied Research and Analytics Methods

Descriptive Analysis	Mixed Data Research	SWOT Analysis
Comparative Analysis	Qualitative Data Collection	Data Filtering

Data Sources

Media Overview (Articles and Press Releases)	Industry-Specialised Databases	Publicly Available Sources (Websites)	Industry Reports and Reviews
--	--------------------------------	---------------------------------------	------------------------------

Relying on various research methods and analytics techniques, the analytical provides practical recommendation for the Longevity Check-Up on Harley Street. This approach has certain limitations, especially when using publicly available data sources and conducting secondary research. Longevity Industry Analytics is not responsible for the quality of the secondary data presented herein; however, we do our best to eliminate the said risks using different analytics techniques and cross-checking data. Please note that we did not deliberately exclude certain companies from our analysis. Nor was it due to the data-filtering method used or difficulties encountered. The main reason for their non-inclusion was incomplete or missing information in the available sources.

Report Methodology

To evaluate the top **Longevity Clinics** and choose the most prominent ones, was developed a framework **with 6 overarching parameters**:

Services



This parameter allows analysing and compare the versatility of longevity clinics.

Team Composition



This parameter allows to analyse the variety of doctors and staff who can help patients to solve their medical issues.

Science Activity



This parameter allows analysing clinics' scientific achievements and intellectual property

Prices



This parameter allows comparing prices for longevity clinics' services

General Characteristics



This parameter allows analysing basic information about the clinics' history, their location, media representation and level of regulation

Marketing



This parameter allows analysing marketing strategies, activities, methods and platforms longevity clinics tend to use to attract and communicate with patients

Overall **performance** within each criteria category was taken into account to choose the **leading Longevity Clinics**.

Executive Summary

Longevity Clinics

A lot of London's leading integrative medicine clinic & testing facilities are located on the Harley Street. What makes these clinics stand out is the range of longevity services and executive health assessment programs. **These services include full blood test, treatment of different condition, pain management, aesthetics, vein clinic, weight loss clinic, Private GP, anti-ageing & Longevity, fertility clinic, physiotherapy.**

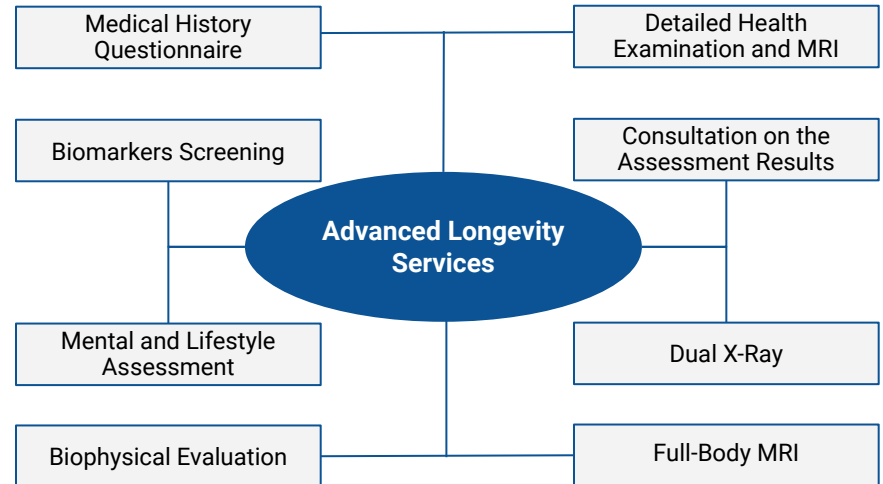
Programs are state-of-the-art genetic and cellular level treatments designed to prolong life and maximize vitality. These include a range of testing and specific screening aimed at prolonging life, health and wellbeing, as well as anti-ageing, aesthetic beauty and skin and organic health.

Longevity clinics thoroughly assess the existing conditions and lifestyles of their patients. These assessments help the clinics to create personalized health programs, nutrition plans, and lifestyle advice tailored specifically to the patients' needs.

The **Longevity Clinics and Services on Harley Street** report provides information about the prices of services available at top-tier longevity clinics on Harley Street, as well as offers alternative options for select Longevity Check-Up services at other clinics, laboratories, and diagnostic centres. The advantages of such additional Longevity Services.

Advanced Longevity Services

While the Longevity Medicine field is still developing, the advanced services presented in private clinics and hospitals help to introduce this innovative type of medical care to the people. Since **Longevity Medicine** targets people who most likely already have a preference for the specific medical establishments, the introduction of **Advanced Longevity Services** in the hospitals that have already earned the trust of their patients over the years is the best way to provide advanced **anti-ageing** care for the elderly.

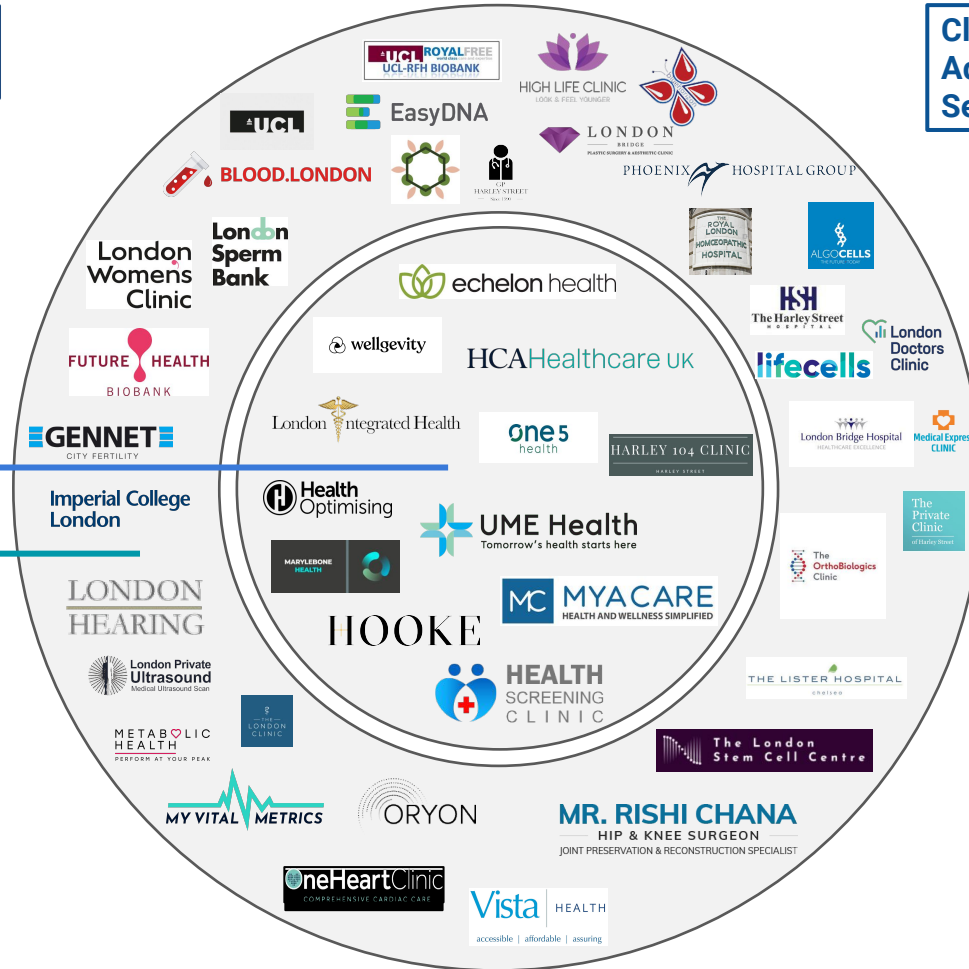


Longevity Clinics and Services on Harley Street

**Clinics - 12
Additional Longevity Services - 36**

Longevity Clinics

Additional Longevity Services



List of Longevity Clinics on Harley Street

1	Echelon Health
2	Hooke
3	Medical Express Clinic
4	One5 Health
5	UME Health
6	The Harley Street Clinic HCA

7	25 Harley Street
8	Harley Street HealthCare Clinic
9	London Integrated Health
10	9 Harley Street
11	Marylebone Health Group (CHHP)
12	Health Screening Clinic

Longevity Industry General Overview

Longevity Industry Overview

Longevity has become a major focus of some of the largest financial institutions in the world, with many major institutional investors seeking opportunities to contribute to the development of the Longevity industry by investing in Longevity Fintech, Longevity Biomedical companies, and startups. Ageing has become more than a challenge at the intersection of many of the most acute problems of our time - it also presents one of **the most promising opportunities**.



“The one billion retired people globally are a multi-trillion dollar opportunity for business”.

~ Dmitry Kaminskiy, interview in the Financial Times



“The global spending power of those aged 60 and already reached \$15 trillion annually”.

~ Bank of America Merrill Lynch

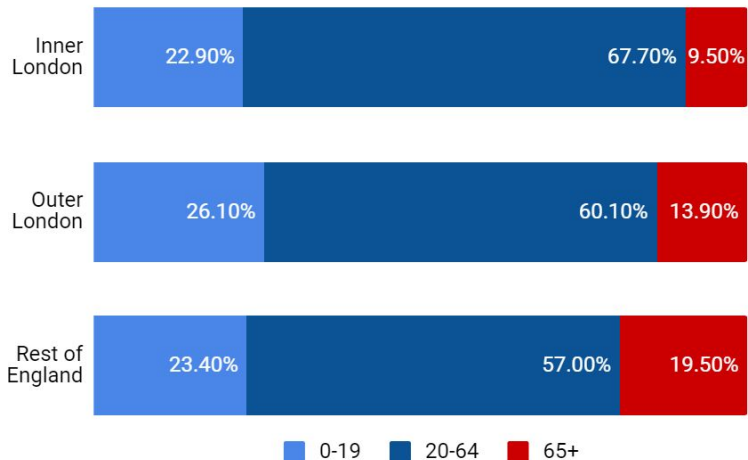


Ageing in London

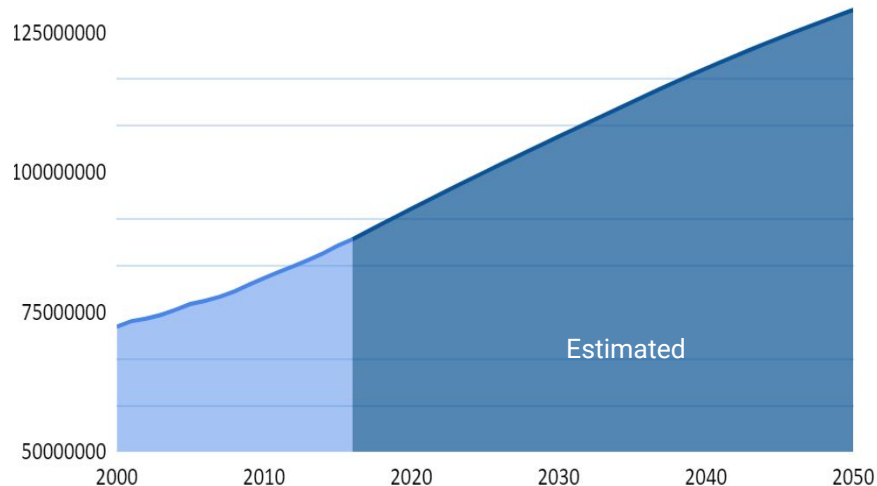
There are **2.5 million people aged 50 or over** living in London. Of this number, **1.1 million are aged over 65** and this is projected to increase by **86%** in the next thirty years. This is a far quicker rate than younger age groups.

There are **130,000 people aged over 85** in London, and that is expected to increase to **180,000 over 85 by 2024**, which is a **38%** increase in 10 years London's population, like that of the rest of the UK, is getting older.

London's Age Population Share, 2024



London's Population Growth (estimated for 2017-2050), 2024



Social and economic circumstances have a great impact on how people experience older age and on levels of inequality. Over the last 30 years, the share of Londoners aged 65 or over **fell 3 percentage points to 11.9 per cent in 2024, the lowest of the 12 regions**. Analysts said the tendency to cash in on **high property prices** in the capital and a poorer quality of life were some main factors pushing pensioners out.

The Hallmarks of Ageing

1. Genomic Instability

Ageing can be the consequence of increased DNA damage accumulation. This is due to physical, chemical, and biological agents, as well as DNA replication errors, spontaneous hydrolytic reactions, and reactive oxygen species (ROS).

2. Telomere Attrition

Telomeres are the chromosomal regions located on the ends of chromosomes. They tend to become increasingly shorter after each DNA replication. When this sequence ends, the cell dies. Telomerase deficiency in humans is associated with age-related diseases.

3. Epigenetic Alteration

Epigenetic changes involve alterations in DNA methylation, post-translational modification of histones, and chromatin remodelling. It can lead to abnormal function of cell.

4. Loss of Proteostasis

Proteostasis involves mechanisms for the stabilization of correctly folded proteins, as well as mechanisms for the degradation of abnormal proteins. These processes tend to change during ageing.

5. Deregulated Nutrient Sensing

Nutrient sensing includes trophic and bioenergetic pathways, such as insulin and IGF-1, signalling pathways, and other systems (mTOR, AMPK, and sirtuins).

6. Mitochondrial Dysfunction

There is a noticeable reduction in ATP generation and increased electron leakage in the respiratory chain caused by ageing. It is associated with mitochondrial damage.

7. Cellular Senescence

Cellular senescence can be defined as a stable arrest of the cell cycle. The accumulation of senescent cells in aged tissues can lead to age-related disease progression.

8. Stem Cell Exhaustion

Stem cells are cells from which all other cells with specialized functions are generated. There is a substantial decrease in the number of stem cells during life. Recent studies suggest that stem cell rejuvenation may reverse the ageing phenotype.

9. Altered Intercellular Communication

Neurohormonal signalling tends to be deregulated in ageing as inflammatory reactions increase, while immunosurveillance against pathogens and premalignant cells declines.

3 New Hallmarks of Ageing

This analytical case study offers for consideration “Hallmarks” as factors and signs of immune, psychological and reproductive ageing: iAge, pAge and rAge, respectively. We focus on the modern understanding of ageing and the related study of various biomarkers that determine the signs of ageing. Each “feature” should ideally meet the following conditions:



Biological ageing, with a certain rate and sequence of age-related changes corresponding to the **biological, adaptive and regulatory** capabilities of a person.



Its test correction (**slowing down or suppression**) to slow down the biological ageing process and **prolong the healthy life**.



Its test **escalation** to **accelerate** ageing.

The **ageing of the immune system (iAge)** is seen as a consequence of the constant exposure of the body to antigens. Lifelong antigenic load and oxidative stress affecting the immune system form an individual immunological history. The increasing imbalance of cellular and humoral immunity with age leads to a decrease in the efficiency of recognition and destruction of pathogens, an increase in the level of so-called “inflammatory markers” in the blood, cells and tissues.

An important feature of the **psychology (pAge)** of older people is its vulnerability. With age, a person becomes less confident in himself and his strengths, fears appear (loneliness, death, poverty, etc.), the emotional sphere becomes impoverished. In favourable conditions, the human condition remains compensated for a long time. In the event of a job loss, a decrease in social activity, a narrowing of the social circle, negative changes intensify, suspicion, isolation, irritability appear, which only aggravate the problem.

Reproductive aging (rAge) in men and women has a number of features. Its consequences equally negatively affect health and well-being. Changes in the menstrual cycle, with varying cycle length, usually begin in a woman after 40 years. From about age 20, the production of testosterone (the main male sex hormone) in men usually begins to decline by about 1–2% per year. The rate of decline in testosterone production is subject to fluctuations in different men.

Concept of Longevity Medicine

Longevity Medicine is a Smart Precision Medicine (4P Medicine - Predictive, Preventative, Personalised, Participatory) based on Longevity Biomarkers (quantitative methods of ageing biomarkers reflecting biological age, which are individual for each person), therefore Longevity Medicine is personalised by nature.

Longevity Medicine combines the best practices from various fields and uses leading-edge innovation and technologies inherent in the so-called Smart Medicine — telemedicine, telemonitoring and diagnostics based on wearables, virtual care, home based therapy, machine learning, artificial intelligence, Internet of things, and serves to evaluate the patient's biological age throughout the course of life and prolong active longevity and maintain optimal functioning of the body throughout life.

Longevity physicians are looking for ways to reduce the gap between the current parameters (current biological age) and the parameters of optimal maximum physical performance (the ideal biological age, predicted by deep learning).

An important aspect of Longevity Medicine is the use of AI methods and medical decision support systems based on knowledge management.

The Field of Longevity Encompasses
the Likewise Rapidly Evolving Areas of

Biogerontology

Geroscience

Precision
Medicine

Preventive
Medicine

Predictive
Medicine

Smart Medicine

Adequate curricula on ageing and Longevity biotechnology encompassing and explaining the complexities of those fields are an essential foundation to differentiate the burgeoning longevity medicine from anti-ageing and prolonging life. Equipping healthcare providers with tools of obtaining and utilising an individualised precision dataset of each patient not only reduces the risks of the patient developing diseases, but mitigates and even eliminates diseases, and customises optimal preventive and therapeutic approaches.

The Impact of Environment on the Longevity

Increasing human health and Longevity is a global interest. Environmental, genetic, and stochastic factors all affect longevity. Among these factors, the environment is considered to be extremely important.

Various environmental factors can be anticipated: prenatal environment, pollution, radiation and oncogenic agents, notably tobacco, food (quantitatively and qualitatively), medicinal products, stress, education and socio-professional lifestyle, isolation, number of children and sexual activity, sports and exercising, etc.

There are 8 most important environmental factors which affect health such as, chemical safety, air pollution, poor water quality, natural disasters, climate change, diseases caused by microbes, global environmental issues, electromagnetic radiation.

Consider a sobering statistic from Healthy People, which notes that 23% of all deaths (and 26% of deaths among children ages 5 and younger) result from entirely preventable environmental health problems. By optimising environmental health, people can reduce exposure to disease, as well as to pollutants that have a toxic effect on the body.

Also, we all know about the negative impact of electromagnetic radiation on our health, therefore, it's important to reduce its influence.

Environmental Factors which Influence the Longevity



Chemical Safety



Air Pollution



Poor Water Quality



Natural Disasters



Noise Pollution



Diseases Caused by Microbes



Global Environmental Issues



Electromagnetic radiation

The Impact of Environment on the Longevity

Detailed Description of Environmental Factors which Influence the Longevity

Chemical Safety



The chemical safety field is concerned with minimizing the effects of both natural and synthetic chemicals.

Air Pollution



The impact of air pollution on people is a serious public health problem and also can increase morbidity and mortality.

Poor Water Quality



Several factors contribute to poor water quality, including industrial waste and pollution, lack of proper water treatment.

Natural Disasters



Directly impact the health of the population resulting in physical trauma, acute disease, increasing mortality.

Noise Pollution



Noise pollution is the propagation of noise with ranging impacts on the activity of human, most of them harmful to a degree.

Diseases Caused by Microbes



Is one of the primary ways in which humans can contract diseases (respiratory illness, urinary tract infections, and others).

Global Environmental Issues



Respiratory diseases, heart disease, and some types of cancer can be directly linked to environmental health concerns.

Electromagnetic radiation



Has an effect on the nervous system; it's linked to the development of cataracts, endocrine changes, immune system, carcinogenesis.

Methodology for Selecting Biomarkers Panels

Diagnosis of ageing is an **urgent problem** of modern medicine, the solution of which opens the **possibility to influence the processes, triggers age-related changes, inhibits and prevents them, thus opening the prospects for ageing prevention**. Therefore, of particular importance are the indicators of the body, the regulation of which we can increase, reviving the **continuation of human life**.



Of the thousands of **physiological parameters** known to science, more than **600** are already considered biological markers of ageing. Our task is **to develop a methodology** that would allow us to select from this variety the most interesting from a **practical point** of view biomarkers and offer them as recommended.



The most important thing from our point of view is to **determine** the criteria by which certain **biomarkers** will be classified and offered in the panel: minimum, optimal and maximum. The **criteria** have a degree of importance, the **sequence** of criteria is arranged in decreasing order of importance from 1 to 5.

1

Compliance with at least one of the 9 Hallmarks of Ageing (biomarker should reflect one of the mechanisms of the ageing process of the human body).

2

Availability (prevalence, diagnostic level, home diagnostics, laboratory level, medical centre level, cost, possibility of coverage from insurance).

3

Reproducibility (degree of invasiveness, versatility, male / female, here we mean the ease of introducing a study into wide clinical practice).

4

Ease of interpretation of results (the parameter should have standardized quantitative indicators, and the reference values should be recognized in many studies).

5

Allows to classify a biomarker by coverage or depth (molecular, cellular, tissue, organ, systemic, organismic).

Biomarkers Panel

The optimal version of biomarkers panel includes **functional biomarkers**. To this panel were added **biomarkers**, which are best related to the **signs of ageing**, including biomarkers of reproductive, immune and psychological health. A number of studies aimed at **diagnosing** and **predicting ageing**.

Alanine aminotransferase (ALT)
Aspartate aminotransferase (AST)
Zinc
Albumin
Alpha-fetoprotein (AFP)
Vitamin B12 (cyanocobalamin)
Calcium (total)
Parathyroid hormone
Atherogenicity index
Insulin
Glucose
NT-proBNP
HOMA-IR index calculation
Creatinine
Magnesium
Urea (BUN)

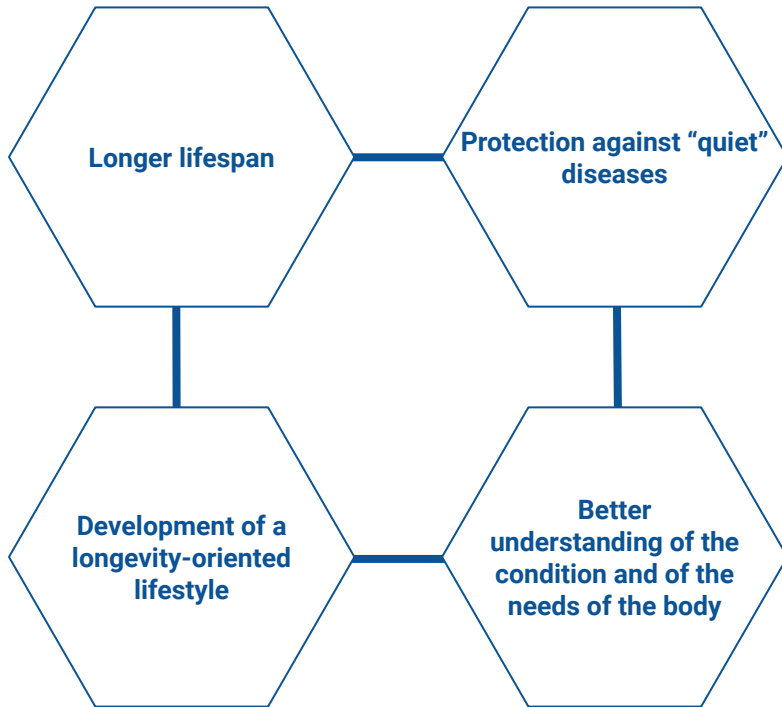
Uric acid
T3 (general)
T3 (free)
T4 (general)
T4 (free)
C-reactive protein (ultrasensitive)
Interleukin 6
Serum iron
TSH
Antibodies to thyroglobulin, anti-TG
Antibodies to thyroperoxidase, anti-TPO
Cortisol
Testosterone
Ferritin
Homocysteine
Vitamin D (25-OH) (calciferol)

Folic acid in erythrocytes
Cholesterol
Cholesterol-HDL
LDL cholesterol
Triglycerides
Bilirubin (common)
ECG (with transcript)
Se (selenium (ISP-MS))
Glycated hemoglobin (HbA1C)
Lactate
General blood test (5-diff)
D-dimer
Calcium (Ca ²⁺), Potassium (K ⁺), Sodium (Na ⁺), Chlorine (Cl ⁻)
Duplex scanning of the carotid arteries to determine the thickness of the intima-media complex

Longevity Check-Up Benefits to Health

Concept of Longevity Check-Up

Benefits of Having a Longevity Check-up



Longevity check-up is a type of **medical check-up** which collects in-depth data on the patient's health to assist in the prevention of disease and to **guide the patient towards** an increased lifespan. Longevity check-ups use precision medicine technologies to obtain data otherwise inaccessible to the patient and their doctor in a more traditional **disease- and symptom-focused** medical care model. Contrary to the latter, longevity check-ups are a part of the preventive medicine paradigm.

Longevity check-ups offer the patients a variety of analyses that are usually only **available to patients with specific symptoms**: MRI, CT, Ultrasound scans, involved **blood work, genetic investigations**, etc. The collected data is then used to catch the early signs of disease (which may include lifestyle, chronic, and oncological diseases), and to track the **performance** of the body with regard to its best possible performance.

Longevity check-ups are the first step to and a powerful tool of longevity medicine. **Early diagnostics** and advanced data parsing allows the medical team to tackle any diseases before they develop larger imbalances and deficiencies in the patient's body, often resulting in an **easier and more complete** treatment. This effect is famously studied for cancers, which are most effectively treated before the patient develops any symptoms. Effective treatment of such **diseases has** a direct influence on the patient's lifespan and, together with proper advising on nutrition and lifestyle (which can also be derived from diagnostic data) **could ensure** that the patient lives a longer and a healthier life.

Longevity Health Check Programme

Risk Assessment

Behavioral Factors:

- Smoking Status
- Physical Activity
- Technology Usage

Biological Factors

- Age and Gender
- Family history IHD
- Ethnicity
- BMI
- Cholesterol Test
- Blood Pressure

If at risk:
Blood Sugar test

DM: Diabetes Mellitus
eGFR: estimated Glomerular Filtration Rate
IFG: Impaired Fasting Glucose
IGT: Impaired Glucose Tolerance
CKD: Chronic Kidney Disease

Communication of Risk



Risk Management

- Behaviour change tool e.g. Mid Life Check
- NHS stop smoking services referral
- Oncology screenings
- Weight management and exercise on referral
- IFG/IGT lifestyle management advice
- Statin prescription offered
- Statin prescription offered

RECALL

Raised BP

IFG/IGT

If blood sugar high

Oral Glucose Tolerance test

DM

If CVD risk assessed as >20%

Assessment for hypertension[^]

High

Serum Creatinine[^]

EGFR Low

CKD assessment

Diabetes Register

Annual Reviews

Hypertension Register

CKD Register

Longevity Health Check Programme

Conduct Risk Assessment

- Age
- Gender
- Ethnicity
- Family history IHD
- Physical activity
- Alcohol screening
- Smoking status
- BMI – Body Mass Index
- Blood pressure above 140/90 mmHg
Repeat 3 times – record last result
If above 180/110 seek immediate advice from Practice Nurse or GP
- Over 65
- Pulse check record
- Dementia awareness

Assess Risk Score

Calculate the risk score: the score relates to a person's risk of having a cardiovascular event within ten years following the health check. Provide clear written and verbal information about the risk score and what it means.

Discuss Risk Score

Discuss CVD risk and healthy lifestyle. Signpost or refer to lifestyle programmes (record on template and written information for the person)

- NHS Stop Smoking Service
- Alcohol brief advice
- Physical Activity advice
- Weight Management advice

Cardiovascular Disease (CVD) Risk:

Below 10%

with no other risk factors – no blood test required.

10-19%

Blood Tests

ALL: Total and HDL Cholesterol
Those with obesity levels BMI \geq 30 to include: HbA1c, eGFR
Results to be checked by PN or GP

Results



Blood test confirms CVD risk is < 10%:
Advice by HCA

Blood test confirms CVD risk is 10-19%:
Advice by GP/PN



Above 20%

Blood Tests

Total and HDL cholesterol
HbA1c, eGFR; ALT-Alanine aminotransferase
Results to be checked by PN or GP

Results



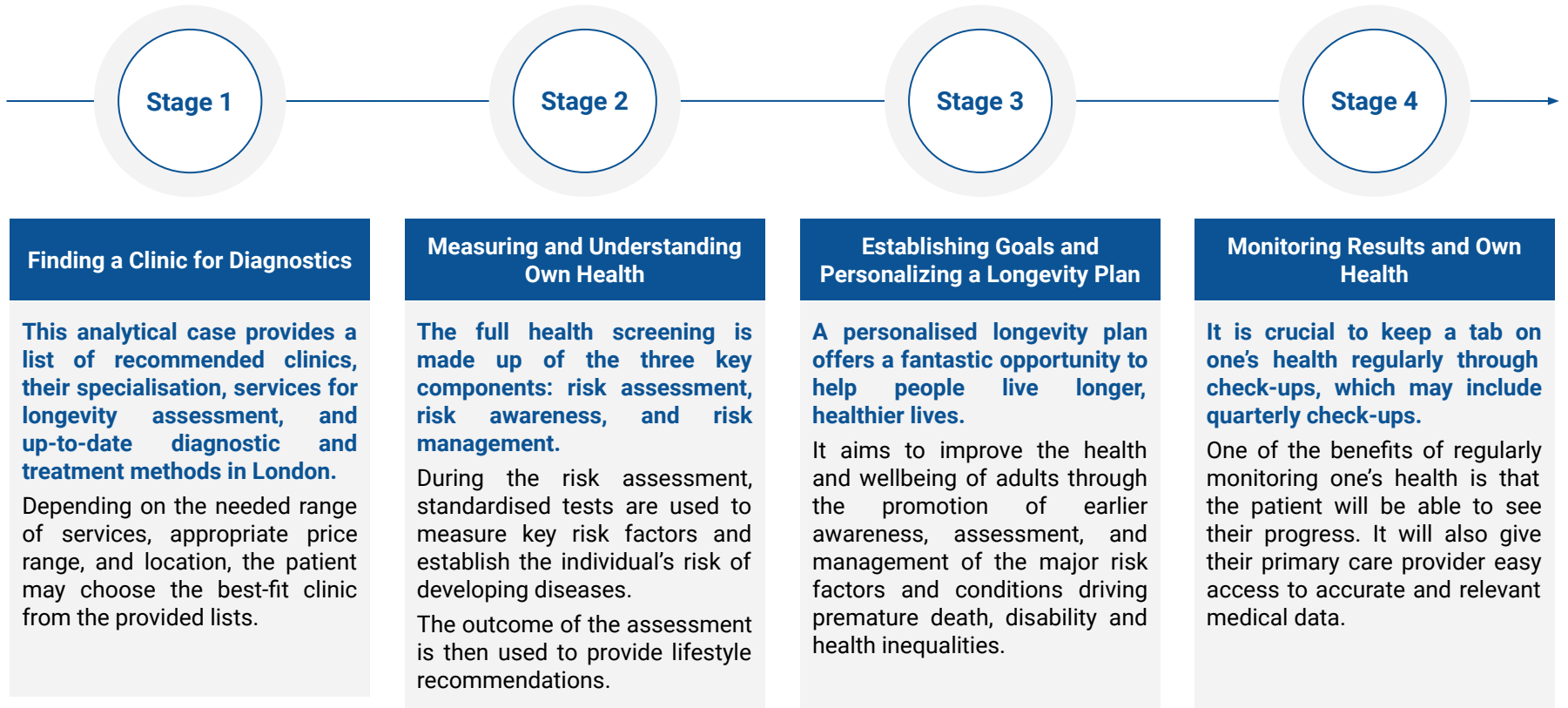
Blood test confirms CVD risk \geq 20% or abnormal BP/eGFR/HbA1c
Advice by GP/PN
On management options

To be seen again in 5 years

Annual Review

Annual Review

Longevity Check-Up Process



Stage 1 – Finding a Clinic for Diagnostics

Getting Started

This **analytical** case study **presents** a shortlist of the **recommended clinics** for a Longevity Check-Up. The clinics are **compared** based on the **comprehensive methodology**. The following aspects have been identified as critical to an **appropriate** choice for a Longevity Check-Up centre:

- The clinic provides a full range of diagnostics for the Longevity Check-Up.
- The clinic meets requirements in terms of location, visiting hours, etc.
- The clinic uses **advanced technologies** and treatments.

The following suggestions outline ways to make a visit to one's Longevity healthcare provider the most effective:

- **Preparing for the appointment** by making a list of questions or concerns to discuss with the provider.
- Bringing any prescription drugs, over-the-counter drugs, vitamins, and supplements to **the appointment** and reviewing them with the provider.
- Taking notes during the appointment and asking follow-up questions.
- Asking for written information about one's **condition** to take elsewhere.
- Calling the clinic or using the provider's **mobile** app in case of questions.

A Quick Checklist to Choose a Clinic

STEP 1:

Learning about one's longevity goals and choices

STEP 2:

Thinking about one's personal needs and financial status

STEP 3:

Comparing clinics based on one's condition and needs

STEP 4:

Having an initial consultation and choosing a clinic

Stage 2 – Measuring and Understanding Own Health

1 Stress and Lifestyle Assessment

- A health and lifestyle interview;
- Blood pressure and basic blood analysis;
- Stress and lifestyle assessment;
- Sensors (glucose monitors (CGM), sleep trackers, blood pressure monitors, or others).

2 Evaluating Biophysical Indicators

- Basal metabolic rate (BMR);
- Distribution of fat/muscle mass in the body;
- Metabolic versus chronological age;
- Coronary Calcium Score (CT);
- Echocardiogram (ECHO);
- Electrocardiogram (ECG);
- Wireless Heart Rhythm;
- Balance Tracker.

3 Blood Testing

- Metabolic, lipid, and glucose levels;
- Medical Provider Review;
- Repeated testing upon lifestyle changes.

- Comprehensive Labs and Metabolic Analysis (analysis of blood biomarkers);
- Insulin Sensitivity Testing;
- DEXA (Dual X-ray absorptiometry);
- Metabolomics;
- Multi-target Stool DNA Test;
- Genomic services.

Stage 2 – Measuring and Understanding Own Health

4

Biometrics Scanning (Detailed Health Examination)

- Full-Body MRI Scan;
- Cranioencephalic: Angio MRI, including Carotid Arteries;
- Ophthalmology: Complete Ophthalmologic Examination;
- Cervical: Carotid Ultrasound;
- Respiratory System: Chest CT Scan + Respiratory Function Test;
- Bones: Bone Densitometry;
- Urology/Gynaecology: Renal/Bladder/Prostatic/Ovaries/Womb Ultrasound;
- Breast: Breast Ultrasound + Mammography (Female Patient);
- Hearing System: Complete Hearing Evaluation;
- Dental: Dental Examination;
- Thyroid: Thyroid Ultrasound.
- Abdominal: Abdominal Ultrasound;
- Cardiac System: ECG + Echocardiography + Coronary Calcium Scan/EBT;
- Intestinal: Sigmoidoscopy (colon);
- Pelvic System: Pelvic Ultrasound;
- Lower Limbs: Venous and Arterial Ultrasound;
- Spirography;
- Chest X-ray;
- Audiogram;
- Colonoscopy;
- Predictive Genomic Services: Biomarkers of Aging, Immune Status. Vitamins and Minerals.

5

Genetic Analysis

- Understanding long-term health risks;
- Reviewing insights with the primary care provider;
- Incorporating results into the longevity plan.

6

Medical and Family History Profile

- Initial Medical History Questionnaire;
- Centralized medical history;
- Family health history.

Stage 3 – Establishing Goals and Personalising a Longevity Plan

Longevity plan includes recommendations regarding lifestyle, nutrition, sleep, exercise, stress resilience, etc. based on comprehensive assessment.

1

Setting Goals in Baseline Visit

The baseline begins with an in-depth review of the patient's health data – biometrics, labs, medical history, family history – and a complete physical exam. The health provider will highlight opportunities to proactively improve the patient's health.

- Reviewing biometrics and lab results;
- Discussing goals and questions;
- Prioritizing areas for improvement.

2

Developing an Evidence-Based Plan

Each personalised plan will have a goal, and the clinic will track the patient's progress, including proactive check-ins along the way.

- Reviewing options with the provider;
- Aligning on the proper next steps in care;
- Tracking progress towards one's goal.

Why a Personalised Longevity Health Plan is needed?

Longevity Health Plan addresses a significant unmet need of the patients through a more person-centric model of care that improves coordination of care and reduces avoidable hospitalizations for members placed in the institutional setting. There are also diseases that are specific to the elderly such as Alzheimer's and movement difficulties. Often, these may be written off as a part of age-related deterioration.

However, the aforementioned symptoms can be alleviated and, in some cases, are fully treatable given the proper diagnosis and treatment. This is particularly true if the diagnosis is made early on, as early treatment may provide a higher chance of successful recovery. A Personalised Longevity Health Plan is crucial because it considers the unique needs and health goals of each individual, leading to more effective and tailored interventions. By focusing on preventive measures and early detection of age-related conditions, such a plan can significantly improve overall health outcomes and quality of life. Additionally, it empowers individuals to take proactive steps towards maintaining their health and well-being as they age, promoting independence and vitality in later years.

Stage 4 – Monitoring Results and Own Health

1 Tracking Own Mental Health

- Regularly attending Psychotherapist;
- Measuring the levels of anxiety and depression;
- Tracking changes over time.

2 Monitoring Own Skin for Early-Stage Cancers

- Completing a physical skin exam;
- Taking photos of blemishes;
- Tracking changes in skin over time.

3 Staying in Touch with the Provider

- Responding to check-ins from the provider;
- Updating the provider on the condition;
- Actively engaging with the provider on questions and concerns;
- Booking virtual or in-person visits.

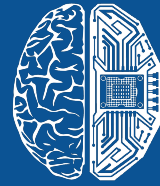
4 Adjusting Care Plan

- Adjusting longevity plan according to new insights;
- Meeting with the provider when needed.

5 Routinely Updating Lab Work and Biometric Scans

- Reminders for needed updates;
- Scheduling follow-ups;
- Reviewing test results to track progress.

Doctors are highlighting the importance of prevention as a means to reduce the number of patients requiring medical treatment or surgery. **Regular check-ups can help find potential health issues before they become a problem.** Medical providers that have patients complete check-ups often are able to detect health conditions or diseases early that gives the patient the best chance for getting the right treatment quickly, avoiding any complications. **By getting the correct health services, screenings, and treatment, the patients are moving toward living a longer, healthier life.**



DEEP
KNOWLEDGE
GROUP

Longevity Clinics on Harley Street

Concept of Longevity Clinic

The Longevity Clinic is a specialised medical institution, whose specialists deal exclusively with the problems of prolonging active life in its various aspects. They can be multidisciplinary or focus on one of the following areas:

Diagnosis and Treatment of Age-dependent Diseases

Aesthetic Medicine and Cosmetology

Reproductive Medicine

Regenerative Medicine

Functional Medicine

Space Medicine

Sport Medicine

Rehabilitation

Longevity diagnostic is a **new approach** to assessing human health, which differs from the **traditional** in that **comprehensive examination programs** and interpretation of results are conducted with a focus on **prolonging the active quality of human life**, taking into account risk factors affecting ageing and the **development** of common diseases **associated with age**.

Performing laboratory (tests of blood and other biological fluids) and instrumental (ultrasound, MRI, etc.) tests to detect diseases, including in the early stages of development

Biomarkers of Ageing

Immune Status Study

Genomic Status Study

The **paradigm of Longevity** and healthy ageing as a top priority has a **significant impact** on approaches to **primary, secondary and tertiary disease prevention**. Along with clinical (objective) health indicators, specialists in the field of **Longevity Medicine** emphasise the **subjective assessment of health and quality of life**, as well as the unity of **chronological (passport), biological and subjective (psychological) age**.

Methodology for Selecting Longevity Clinics on Harley Street

The main goal of this analysis was to investigate longevity clinics and additional longevity services of Harley Street and identify top 12 clinics and precision medicine clinics, hospital, diagnostic services, laboratories with additional longevity services out of over 100 registered in Harley Street.

The top 10 longevity clinics and services ranking was created using data collection approach. The evaluation of over 100 clinics and additional longevity services by experts allowed to build a ranking of Harley Street clinics and services from the most advanced and competitive clinics at the top to less effective and developed at the bottom of the list.

While some clinics at the bottom of top longevity clinics rank can be treated as less advanced in comparison with clinics which top the rank, they should be considered as truly effective ones as they are all in top 10% of Harley Street clinics.





Every **Longevity Clinic** from the list obtained **scores** from three independent experts. The **weight of each of the experts' scores in the final mark is 50%**. The method of normalised score allowed to rank every single clinic from **10** (the top score) to **2** (the lowest possible score). The best performing clinic from our rank obtained **9.2 out of 10 points**, as it was decided not to use the best performing clinic from the list as the benchmark.

The aim of the analysis was to create a **golden standard** of longevity clinic. Comprehensive **investigation** of clinics allowed to reduce the level of subjectivity of the analysis significantly. The empirical approach to the **comparative analysis** of longevity clinics in Harley Street allowed to represent the most advanced clinics and diagnostic centres in one of the longevity centres in the world.






There were chosen 6 most significant indicators which helped to **rank** all clinics from the list, such as availability of services, equipment, team composition, **intellectual property**, pricing and geographical location to compare the performance of clinics.

The rigorous evaluation process ensured that only the most reputable and reliable longevity clinics were considered in the analysis. By incorporating a **diverse range of indicators**, including service accessibility and geographical location, the analysis provided a comprehensive overview of each clinic's strengths.

Comparative Analysis

Longevity Check-Up	 echelon health	HOOKE	 Medical Express CLINIC	 one5 health	 UME Health <small>Tomorrow's health starts here</small>	HCAHealthcare UK
	Echelon Health	Hooke	Medical Express Clinic	One5 Health	UME Health	The Harley Street Clinic HCA
Initial health and medical history questionnaire	✓	✓	✓	✓	✓	✓
Biomarkers screening (blood analysis)	✓	✓	✓	✓	✓	✓
Stress, mental, and lifestyle assessment	✓	✓		✓	✓	✓
Biophysical evaluation	✓	✓	✓	✓	✓	✓
Detailed health examination and MRI scan	✓	✓		✓	✓	✓
Consultation on the assessment results	✓	✓	✓	✓	✓	✓
Personalised Longevity Plan	✓	✓				
Access to the most advanced medical technologies	✓	✓	✓	✓	✓	✓

Comparative Analysis

Longevity Check-Up	 PHOENIX HOSPITAL GROUP  HARLEY 104 CLINIC HARLEY STREET	 London Integrated Health	 MYCARE HEALTH AND WELLNESS SIMPLIFIED	 MARYLEBONE HEALTH	 HEALTH SCREENING CLINIC	
	25 Harley Street	Harley Street HealthCare Clinic	London Integrated Health	9 Harley Street	Marylebone Health Group	Health Screening Clinic
Initial health and medical history questionnaire	✓	✓	✓	✓	✓	✓
Biomarkers screening (blood analysis)	✓	✓	✓	✓	✓	✓
Stress, mental, and lifestyle assessment	✓	✓	✓	✓	✓	✓
Biophysical evaluation	✓	✓	✓	✓	✓	✓
Detailed health examination and MRI scan	✓	✓		✓	✓	✓
Consultation on the assessment results	✓	✓	✓	✓	✓	✓
Personalised Longevity Plan			✓			
Access to the most advanced medical technologies	✓	✓	✓	✓	✓	✓

Advanced Technologies for Diagnostics in Longevity Clinics

EOS CT Upright Skeleton

Echelon Health

This ultra low dose CT scan of the entire skeleton in the standing position enables us to determine whether a patient have any postural issues or predisposition to spinal disc problems.

CT Coronary Angiogram

Echelon Health

This determines the exact location and severity of any atheroma; people with significant stenosis of one or more of the heart arteries have a very high chance sooner or later of having a heart attack, but which can be prevented by insertion of a stent The CT angiogram is unique in its ability to also visualise the so called 'soft plaque' which is atheroma that has not yet calcified and which is the most vulnerable to rupturing and causing a heart attack.

3D MRI scanners

One5 Health

MRI is radiation free, sophisticated scan that. The clinic has access to high quality 3T MRI scanners. MRI can be useful as part of the investigation of bone, joint or spinal problems.

X-Ray

One5 Health

An x-ray is a quick, cheap and valuable tool in investigating certain bone or joint problems as well as chest or heart problems.

Echelon Health is a longevity clinic where the health Assessment will be carried out using world-class scanning technologies operated by some leading radiographers in the world. The resulting high-quality images are interpreted by a select group of internationally renowned specialist radiologists. The assessment of all the accompanying detailed blood tests and imaging reports as well as the personal consultation with the patient at the end of the process will be carried out by one of the finest physicians consulting in Harley Street today.

Address

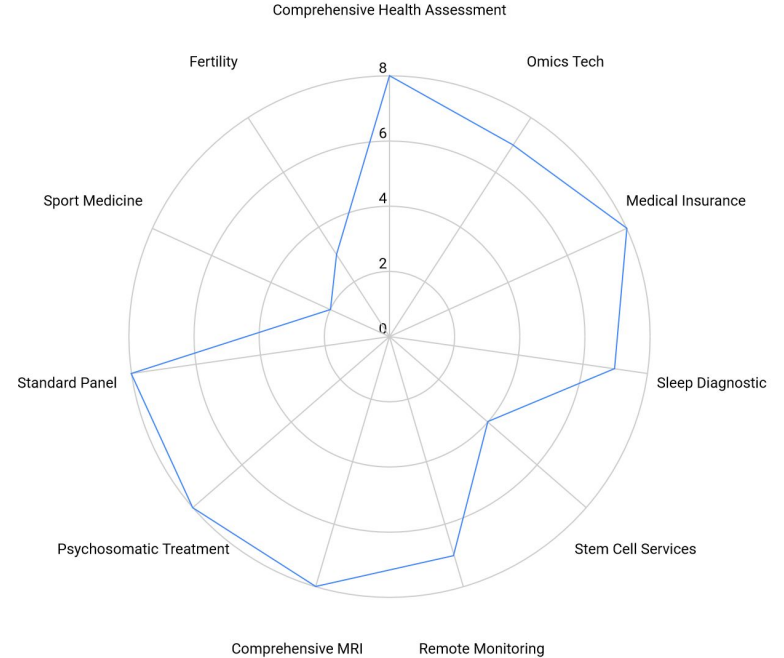
68 Harley Street

Pricing

Comprehensive Health Assessment - £12,000.

Advantages

- A little black book of the best and most in-demand physicians.
- Combined Scanning Technologies.
- Most Advanced Private Health Assessment Award 2021.



Procedures at Echelon Health

Diagnostics	Price	Description
Health Assessment Platinum	£12,000	Medical Questionnaire & Pre Assessment. Blood Tests, ECG, CT Aorta, CT Heart, CT Coronary Angiogram, CT Chest, CT Abdomen, CT Pelvis, CT Virtual Colonoscopy, MRI Brain, MRI Cerebral Artery Angiogram, MRI Carotid, and other services.
Health Assessment Gold	£8,000	Medical Questionnaire & Pre Assessment. Blood Tests, ECG, CT Aorta, CT Heart, CT Coronary Angiogram, CT Chest, CT Abdomen, CT Pelvis, CT Virtual Colonoscopy, Ultrasound Testes/Ovaries, Digital Mammogram (Women only), MRI Prostate (Men only), Summary/ Final Consultation.
Core Cancer	£4,950	Medical Questionnaire & Pre Assessment. Blood Tests, CT Abdomen, CT Pelvis, CT Virtual Colonoscopy, MRI Brain, Ultrasound Thyroid, Ultrasound Testes/Ovaries, Digital Mammogram (Women only), Summary/ Final Consultation.
Healthy Heart	£1,950	Medical Questionnaire & Pre Assessment. Blood Tests, ECG, CT Heart, CT Coronary Angiogram, Summary/ Final Consultation.

Health Assessment Plan

Total Baseline
£12,000

If a fully comprehensive health assessment is what patients are looking for, Platinum Health Assessment is a right choice. The most advanced and cutting-edge scanning technology and skilled doctors, enable us to detect tumours as small as 1-2 mm and subsequently, up to 94% of the causes of preventable death.

Patient Can Expect:

- To be greeted personally on arrival by one of our highly trained Client Liaison team.
- To complete any last-minute paperwork (although most will have been done beforehand).
- To have the bloods taken and undergo an ECG.
- Dependent on the package a patient have chosen, the patient will move seamlessly from CT to MRI to Ultrasound.
- After CT scans (if applicable) a patient will be able to have something to eat and drink.
- At the end of the visit, the team will review the day with a patient to ensure it met the expectations and arrange a date for the follow-up consultation.

[Learn more about Echelon Health services](#)



Hooke located on a neighbourhood of Harley Street. It is a pioneering healthcare Longevity Clinic dedicated to disrupting traditional medical approaches by prioritizing early intervention and personalized care. Through cutting-edge diagnostic tools, evidence-based lifestyle interventions, and continuous nurturing care, HOOKE aims to extend and enhance individuals' healthspan, helping them live longer and better lives. With a multidisciplinary team of experts, HOOKE offers a holistic approach to health.

Address

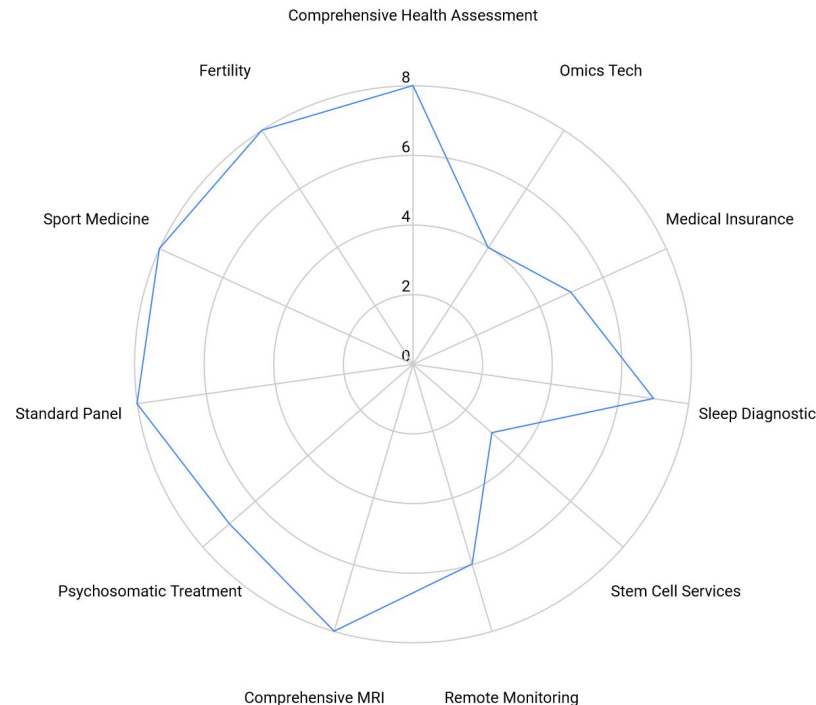
86 Brook Street, London.

Pricing

Healthspan+ Membership - £54,000 per year

Advantages

- Comprehensive diagnostics program for early detection and management of health issues
- Luxurious experience at HOOKE's hub with premium care and state-of-the-art facilities
- Integrated approach addressing emotional, musculoskeletal, skin, and dental issues



Procedures at Hooke

Diagnostics	Price	Description
Health Investigation	£7,500	This is a comprehensive health investigation and diagnostics program offered by HOOKE, aimed at providing early detection and proactive management of health issues. The program includes advanced diagnostic screenings, genetic analysis, mental wellbeing assessments, and fitness evaluations, among other services.
Health Investigation+	£15,000	In addition to Standard Health Investigation, clients enjoy a range of additional diagnostic services such as Sports medicine MSK assessment, CT coronary angiogram, Bone density DEXA, 4-Part MRI.
Whole genome sequencing	varies	Whole genome sequencing and polygenic risk score
VO2 max	varies	VO2 max testing, used for medical purposes, measures the maximum amount of oxygen a person can utilize during intense exercise. It's a key indicator of cardiovascular fitness and overall health, helping medical professionals assess an individual's aerobic capacity and tailor exercise prescriptions for optimal health outcomes.

Health Assessment Plan

£15,000

HOOKE's program focuses on early detection and proactive management of health issues. It includes advanced diagnostics and additional services like sports medicine MSK assessment, CT coronary angiogram, bone density DEXA, and 4-Part MRI.

Patient Can Expect:

- Luxurious experience at HOOKE's Mayfair hub with premium care and state-of-the-art facilities.
- Early detection and prevention of conditions for 20 to 30 extra years of optimal health.
- Bioscore tracking to compare ageing markers and extend lifespan.
- Luxurious experience at HOOKE's hub with premium care and state-of-the-art facilities.
- Integrated approach addressing emotional, musculoskeletal, sensory, skin, and dental issues.
- Personalized health plans crafted by an expert multidisciplinary team to address individual needs and optimize overall well-being.

[Learn more about Hooke services](#)



Medical Express

Medical Express provides first-class, private healthcare in a way that effortlessly fits in with a patient's lifestyle. Harley Street health centre combines modern facilities, expert consultants, and on-the-spot treatment to keep our patients thriving. With detailed assessments, individualized plans, and accessible nutrition counseling, Medical Express supports patients in achieving optimal health outcomes. Their dedicated team ensures personalized care, empowering individuals to make informed decisions about their health and well-being.

Address

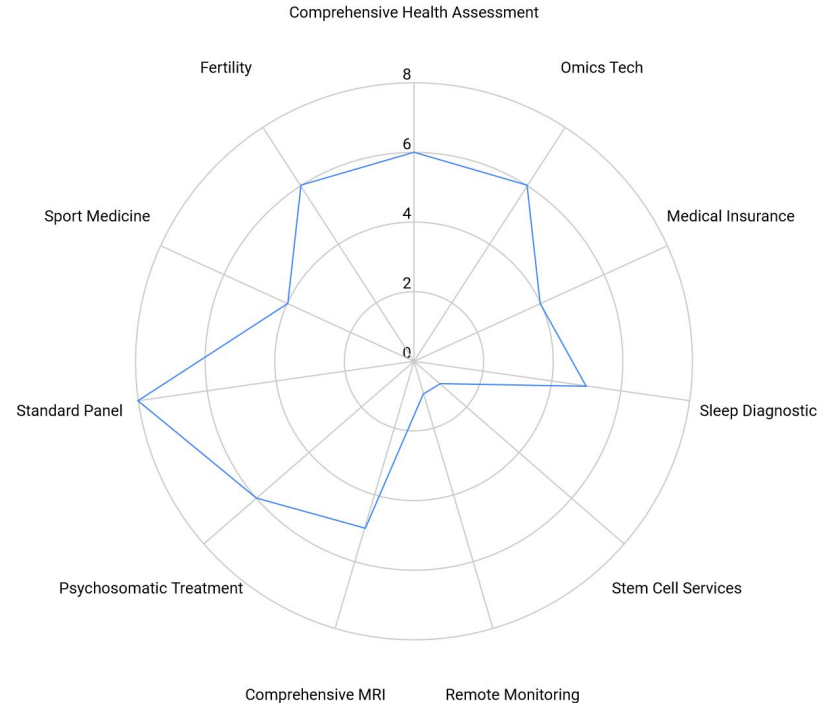
117A Harley St, London.

Pricing

Comprehensive Health Assessment - £1,999.

Advantages

- Walk-in appointments.
- Travel clinic with a wide range of vaccines available.
- Variety of health screening packages.



Procedures at Medical Express

Diagnostics	Price	Description
Consultations	£250-400	Consultation types include specialist consultations, unlimited in time standard consultations, control drug prescriptions, and prescription without consultation.
Mediscreen Gold MOT	595	Tests included in this package screen a patient's biochemistry, cholesterol including liver and thyroid function tests, cardiovascular health and key hormone levels. Combined with the findings from the GP consultation, a patient will be able to get a comprehensive look at the general health along with recommendations to improve a total well-being.
Silver Blood Test	105	Full Biochemistry consisting of Kidney Function, Uric Acid, Bone Metabolism, Nutrition and Immunity, Liver Function, Cholesterol Profile, Blood Sugar (Glucose), Haematology - Anaemia, Red & White Blood Cell count, Inflammatory Markers.
Fertility Assessment	£600+	Convenient treatment options to patients after a close diagnosis and investigation of the relevant gynaecological issues. A wide range of screening, diagnostic, prenatal, surgical and therapeutic services.

Lab Packages

Total Baseline £1999+

Mediscreen Deluxe packages offer a top-to-toe assessment of a patient's health. They have been specifically designed to screen for the most relevant health issues seen in 30 years of experience of general practice work and offer a full consultation with GP to discuss any health problems.

Patient Can Expect:

- A consultation usually takes 15 to 20 minutes in normal cases. If a patient has a more complex or long-standing issue, it may take longer.
- All Full-Body MOT programmes include a private GP consultation and physical examination. This gives a patient the opportunity to discuss concerns privately with an expert.
- Our private Health Screening services provides a patient with up to date, accurate and detailed information about the current state of being. This information a patient can then use to lead a healthier lifestyle.
- A nutritionist can help sort through all of this information on an individual basis, giving patients the confidence that they are eating healthily.
- Detailed assessments and individualized plans support patients in achieving optimal health outcomes.
- Accessible nutrition counseling promotes long-term healthy eating habits.

[Learn more about Medical Express services](#)



One5 Health, located in a neighbourhood of Harley Street, is a private GP clinic with two central London locations. Virtual and in clinic doctor appointments available. At One5 Health, they care for everything from urgent care, common illnesses, chronic conditions and mental health problems. With a focus on comprehensive care, they address urgent needs, common illnesses, chronic conditions, and mental health concerns, ensuring holistic well-being. Patients receive personalized attention and tailored treatment plans.

Address

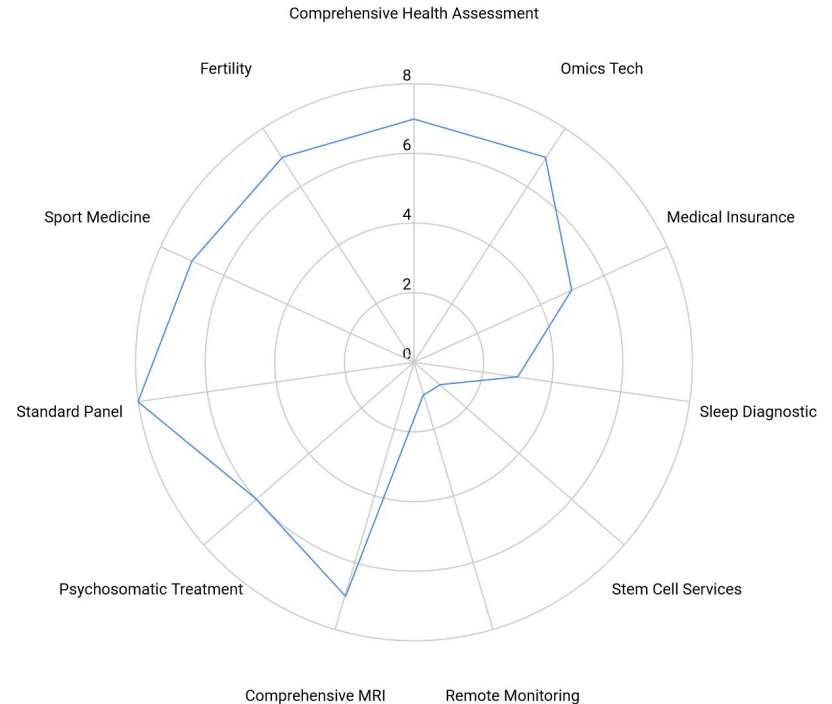
83 Baker Street, London.

Pricing

Comprehensive Health Assessment - £910.

Advantages

- Two convenient location in the UK.
- Consultation via video-appointments are available.
- Sports & Exercise Medicine.



Procedures at One5 Health

Diagnostics	Price	Description
GP Appointments	£50-120	In Clinic GP Appointment (up to 15 minutes) - £60. In Clinic GP Appointment (up to 30 minutes) - £90. Sport & Musculoskeletal Injury In Clinic Assessment (up to 30 minutes) - £120. Video GP Consultation (up to 15 minutes) - £50.
Blood Tests	250	GP appointment, blood test and follow-up appointment.
X-ray	£40+	An x-ray is a quick, cheap and valuable tool in investigating certain bone or joint problems as well as chest or heart problems.
MRI	£300+	MRI is radiation free, sophisticated scan that. The Clinic has access to high quality 3T MRI scanners. MRI can be useful as part of the investigation of bone, joint or spinal problems.

Health Assessment Plans

Total Baseline £910+

From £250, the clinic offers a comprehensive, preventative, full-body health screening option to help a patient to take control of the health. Gain the insights a patient need, expert advice, coaching and an action plan to deliver results. Whatever a patient's age or stage of life, invest in the health today.

Patient Can Expect:

- A 30 minute, doctor-led overview of the health and wellness including medical history, menstrual, fertility and contraceptive histories, mental health review, physical examination and lifestyle assessment.
- A comprehensive blood test panel spanning all things women's health and wellness including hormones, vitamins, cholesterol and diabetes blood profiles.
- A virtual or in clinic follow up to review of the results, giving a patient time to ask any questions and set clear health and wellness goals.
- A patient will always have the option to add on any additional tests including sexual health screening, smear tests or any scans that a patient might need.
- Personalized approach addresses individual health and wellness needs.
- Flexibility for virtual or in-clinic follow-ups accommodates patient preferences.

[Learn more about One5 Health services](#)



UME Health is at the forefront of advanced health assessment, detecting critical risk factors and specific conditions early, often before symptoms manifest. This proactive approach enables more effective and minimally invasive treatments, promoting better outcomes for patients. With a focus on comprehensive care, UME Health offers tailored consultations and cutting-edge diagnostics to address individual health needs. Experience personalized support and proactive healthcare at UME Health, where your well-being is their priority.

Address

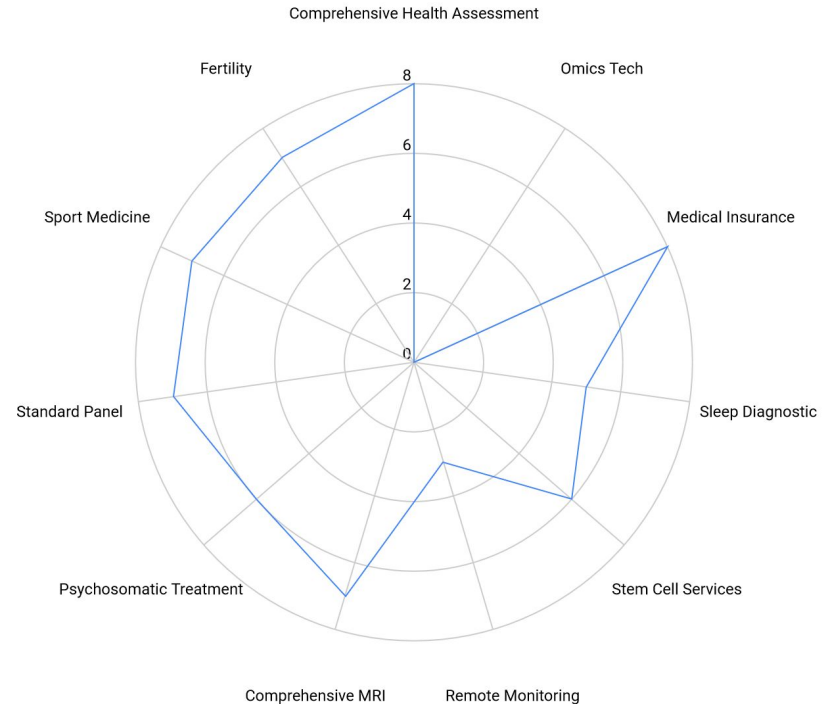
17 Harley Street, London

Pricing

Advanced Health Assessment - upon request

Advantages

- UME Health For The Optimisation Of Healthcare And The Prevention And Reversal Of Chronic Disease
- The most advanced and modern techniques
- The clinic offers a wide range of services and packages for patients with different possibilities



Procedures at UME Health

Diagnostics	Price	Description
Consultations	varies	Clinic Provide Consultations with a wide range of experience and expertise across all specialties. Women's health, men's health, paediatrics, elderly care, insomnia, mental health, digestive health, cardiovascular health, medical check-ups, health assessments.
Diagnostic	varies	Tests included in this package screen the biochemistry, cholesterol including liver and thyroid function tests, cardiovascular health and key hormone levels. Combined with examination from a GP consultation a patient be able to get a comprehensive look at the general health along with recommendations to improve a total well-being.
Sport Medicine	varies	Treatment of lower back and neck pain, slipped discs and trapped nerves- pain relieving injections, CT and X-Ray guided as an outpatient, day case and hospital inpatient(epidurals, transforaminal nerve blocks, facet joint injections, sacroiliac joint injections
Fertility	varies	Sexual health diagnostic and convenient treatment options to patients. A wide range of screening, prenatal, surgical and therapeutic services.

Lab Packages

Varies

UME Health packages offer a comprehensive assessment of patient's health. The clinic have been specifically designed to screen for the most relevant health issues seen and has valuable of experience of general practice work. The clinic offers a full consultation with GP to discuss any issues

Patient Can Expect:

- A consultation usually takes 30 minutes in most cases. If a patient has more complex issues it may take longer
- All Full Body monitoring programmes include MRI scanning consultation and physical examination.
- The opportunity to discuss patient's concerns privately with an expert
- Advanced Health Screening services provides patients with up to date, accurate and detailed information about current state of being. This information can be used to lead a healthier lifestyle
- Clinic provides Sport medicine consultations and treatments
- Comprehensive follow-up care to review test results and adjust health plans accordingly.

[Learn more about UME Health services](#)



The Harley Street Clinic HCA

The Harley Street Clinic HCA offers cutting-edge health assessment techniques are utilized to identify crucial risk factors and potential conditions before symptoms arise, leading to more efficient and less invasive treatment options. Emphasizing holistic care, The Harley Street Clinic HCA provides personalized consultations and state-of-the-art diagnostics tailored to meet each patient's unique health requirements. Clinic offers individualized attention and proactive healthcare initiatives, where patient well-being takes precedence.

Address

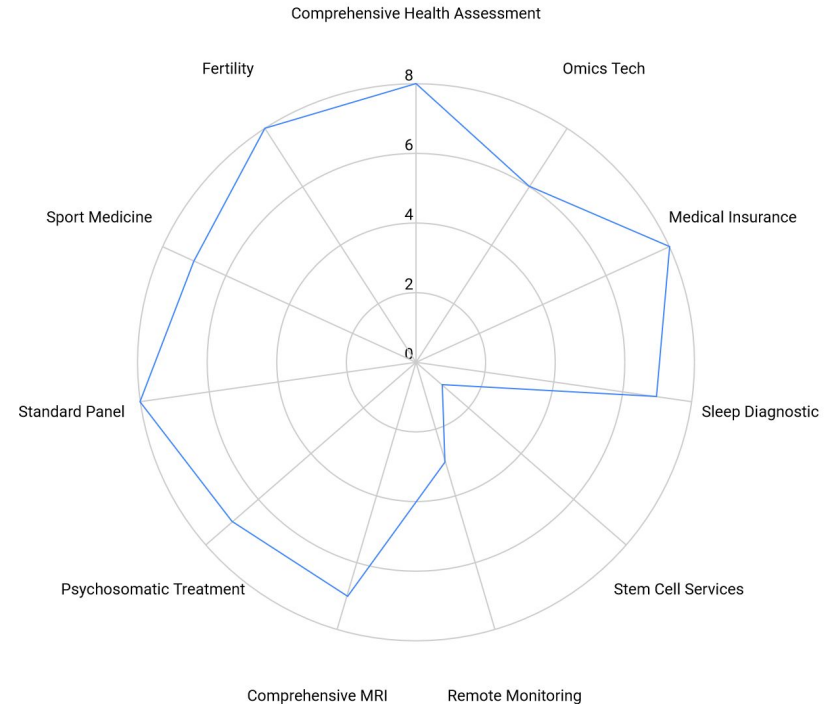
Harley street clinic, The, 35 Weymouth St, London

Pricing

Comprehensive Health Assessment - upon request

Advantages

- The Harley Street Clinic HCA for the Optimisation Of Healthcare, Prevention and Reversal Of Chronic Disease
- The most advanced and modern techniques
- Clinical assessment of a patient's current mental and physical state



Procedures at The Harley Street Clinic HCA

Diagnostics	Price	Description
Consultations	varies	Consultation types include specialist consultations, unlimited in time standard consultations, control drug prescriptions, and prescription without consultation
Diagnostic	varies	Tests included in this package screen the biochemistry, cardiovascular health, key hormone levels and other biomarkers. Combined with examination from a GP consultation, a patient gets a comprehensive look at the general health along with recommendations to improve a total well-being.
Treatments	varies	The clinic prides itself on providing an extensive array of treatments meticulously designed to address a diverse range of health conditions. From preventive care to advanced therapeutic interventions, our comprehensive approach ensures that patients receive tailored solutions to enhance their overall well-being and quality of life.
Fertility	varies	Provide diagnostic services and convenient treatment options for sexual health issues, along with a diverse array of screening, prenatal, surgical, and therapeutic services. Clinic offer also include biobanking services for eggs and sperm.

Lab Packages

Varies

The Harley Street Clinic HCA packages offer a comprehensive assessment of patient's health. The clinic have been specifically designed to screen for the most relevant health issues seen and has valuable of experience of general practice work.

Patient Can Expect:

- Typically, consultations last between 30 to 40 minutes, though in cases involving more complex issues, the duration may extend.
- Each Full Body monitoring program encompasses an MRI scanning consultation and a physical examination
- Privately addressing patients concerns with an expert.
- Private Health Screening services furnish patients with precise and comprehensive insights into their current state of health.
- Personalised Healthy Lifestyle consultations
- Personalized lifestyle consultations tailored to individual needs and goals.

[Learn more about The Harley Street Clinic HCA services](#)



25 Harley Street

25 Harley Street prioritizes thorough health assessments aimed at identifying key obstacles to optimal well-being and provides expert guidance on achieving and maintaining health while proactively addressing aging concerns. The clinic's emphasis on comprehensive diagnostics ensures early detection of potential health issues, empowering patients to take proactive steps towards effective treatment and prevention. With access to leading consultants and state-of-the-art diagnostic tools, 25 Harley Street offers the highest standards.

Address

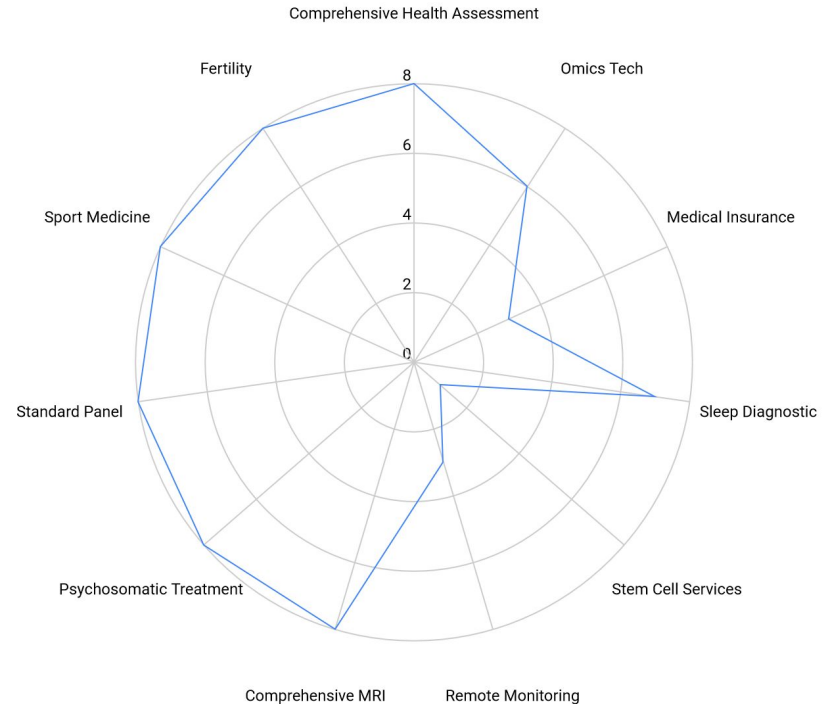
25 Harley Street, London

Pricing

Health Assessment starts from - £495

Advantages

- 25 Harley Street has the most specialists and services, no needs to wait long appointments
- The most advanced and modern techniques
- Clinical assessment of a patient's current mental and physical state



Procedures at 25 Harley Street

Diagnostics	Price	Description
Consultations	varies	Clinic offer access to expert consultants who are leaders in their field, ensuring that patients feel fully reassured every step of their journey.
Diagnostic	varies	Have a number of different Health Screening options designed to detect early signs of illness to give the best possible chance of effective treatment. These are ideal if customer has a family history of disease or are just looking for peace of mind. Tailored to individual requirements, customer can choose one of three packages based on own needs and budget.
Treatment	varies	All specialists seeing patients at 25 Harley Street Clinic have fulfilled rigorous eligibility criteria used to ensure patients receive the highest possible standard of care. All are independently vetted and must achieve the highest standards set by Medical Advisory Committee.
Fertility	varies	Convenient treatment options to patients after a close diagnosis and investigation of the relevant Sexual issues. A wide range of screening, diagnostic, prenatal, surgical and therapeutic services.

Lab Packages

Varies

25 Harley Street is scientifically led and equipped with the latest analysers, allowing to provide accurate and fast results for the blood tests. All tests provided are enrolled in internationally recognised quality schemes.

Patient Can Expect:

- Typically, consultations last around 40 minutes, though they may extend for patients with more complex issues.
- Full Body monitoring programs encompass nutritional, women's and men's health components
- MRI scanning consultations, and physical examinations.
- Setup allows patients to privately address their concerns with an expert.
- Private Health Screening services offer patients current, accurate, and detailed information about their current state of health, empowering them to lead healthier lifestyles.
- Dieticians are available to provide individualized guidance on navigating this wealth of information, ensuring patients feel confident.

[Learn more about 25 Harley Street services](#)



Harley Street HealthCare Clinic

Harley Street HealthCare Clinic provides a comprehensive range of preventive and primary care services tailored to meet the unique health needs of both women and men. From acute and chronic condition management to general and sexual health maintenance, the clinic offers expert consultations and treatments. Patients can expect thorough assessments and personalized recommendations to lead healthier lifestyles, supported by access to experienced specialists and state-of-the-art diagnostic tools.

Address

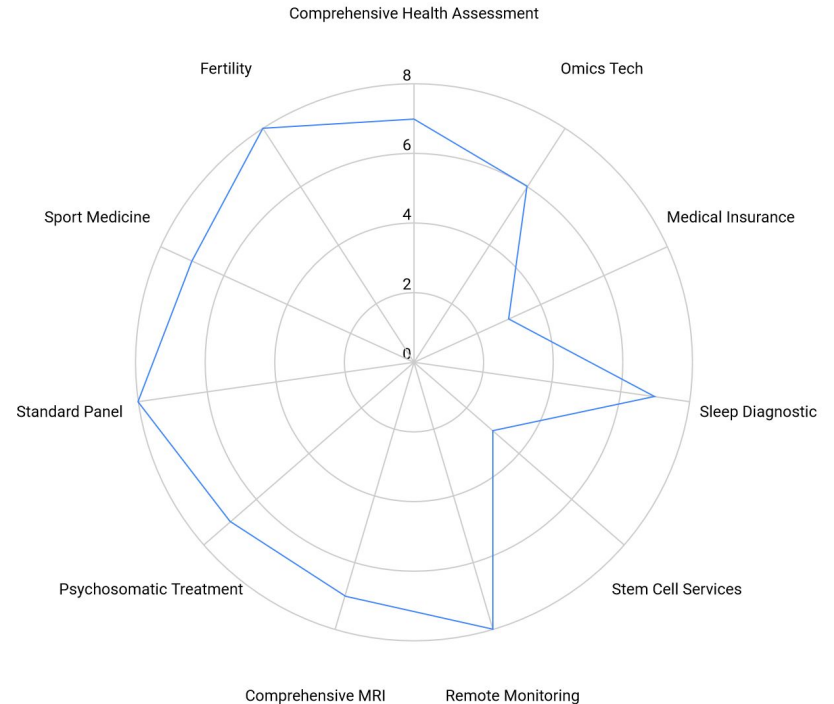
104 Harley Street, London

Pricing

Premium Health Assessment - £865

Advantages

- The Prevention and reversal of chronic disease, fertility issues, sport traumas
- The most advanced and modern techniques
- Clinical assessment of a patient's current mental and physical state



Procedures at Harley Street HealthCare Clinic

Diagnosics	Price	Description
Consultations	varies	Consultation types include specialist and experts-consultants consultations, unlimited in time standard consultations, including online consultations
Diagnostic	varies	These screenings are particularly beneficial for individuals with a family history of disease or those seeking peace of mind. Completely customizable to meet individual needs, customers can select from our three packages, each tailored to their requirements and budget.
Treatments	varies	The clinic offers a comprehensive suite of healthcare services tailored to meet diverse patient needs. From Premium Health Assessments to specialized treatments like Sexual Health and Aesthetic Treatments, patients can access a wide range of diagnostic, preventive, and therapeutic interventions.
Premium Programmes	varies	Clinic offers different types of programs, such as Premium health, Premium Women and Men health, Advanced Cancer screening, Fertility check.

Lab Packages

Varies

Harley Street HealthCare The clinical laboratory services offered at clinic encompass a wide spectrum of diagnostic and preventive healthcare measures tailored to meet diverse patient needs. From comprehensive Premium Health Assessments to specialized testing for Sexual Health concerns

Patient Can Expect:

- A consultation usually takes 30 minutes. If a patient has more complex issues it may take longer
- All Full Body monitoring programmes include MRI scanning consultation and physical examination.
- Opportunity to discuss patient's concerns privately with an expert
- The private Health Screening services provides patients with up to date, accurate and detailed information about current state of being.
- Personalised recommendations to lead a healthier lifestyle
- A nutritionist can help to sort through all individual information on an individual basis, giving patients the confidence that they are eating healthily

[Learn more about Harley Street HealthCare Clinic services](#)



London Integrated Health

London Integrated Health clinic employs an integrative approach to deliver personalized health and well-being support, addressing individual needs comprehensively. The clinic's focus extends beyond physical health to encompass psychological, social, and spiritual dimensions, ensuring holistic care for patients. With a commitment to understanding health issues from multiple perspectives, London Integrated Health offers a unique and comprehensive approach to healthcare. The clinic prioritizes patient-centered care and aims to optimize well-being.

Address

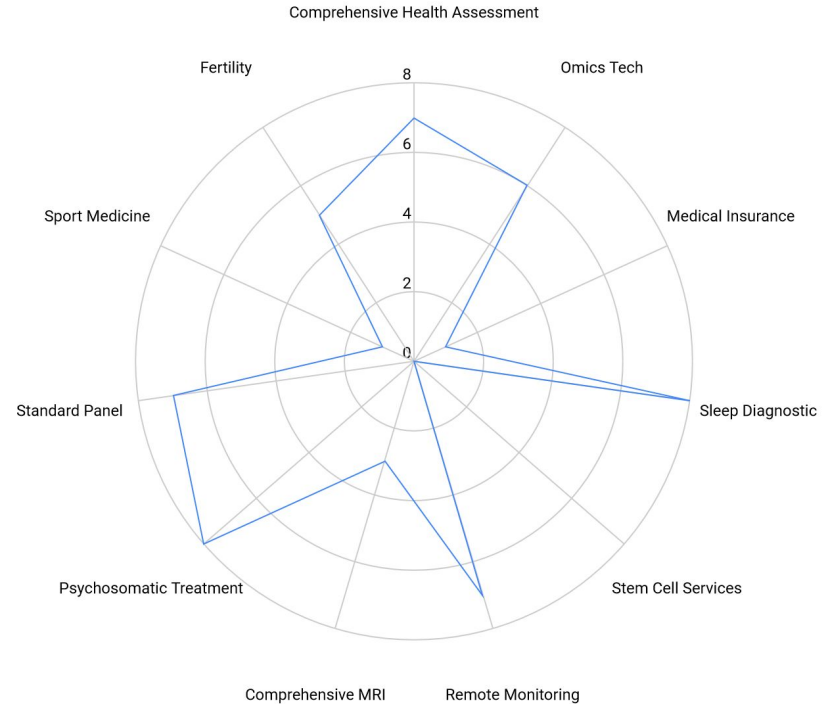
10 Harley Street, London

Pricing

Comprehensive Health Assessment - upon request

Advantages

- Prevention And Reversal Of chronic diseases, sleep and metabolic disorders
- Advanced Treatments
- Comprehensive Diagnostics services



Procedures at London Integrated Health

Diagnostics	Price	Description
Consultations	varies	Consultation types include specialist consultations, online consultations, control drug prescriptions, and prescription without consultation
Diagnostic	varies	Tests included in this package screen the biochemistry, cholesterol including liver and thyroid function tests, cardiovascular health and key hormone levels. When blood tests are combined with measurements, observations, and GP consultation findings, patients gain a comprehensive understanding of their health with recommendations for overall well-being.
Treatments	varies	Clinic offers preventional treatments of physical, emotional and mental health problems in children, adolescents and adults. Convenient treatment options to patients after a close diagnosis and investigation. It may use pharmacotherapy.
Premium Program	varies	Convenient treatment options to patients after a close diagnosis and investigation of the relevant gynaecological issues. A wide range of screening, diagnostic, prenatal, surgical and therapeutic services.

Lab Packages

Varies

London Integrated Healths packages offer various tests give you a detailed understanding of customer health risk and health potential, also available onco and immunological tests

Patient Can Expect:

- A consultation usually takes 30 minutes. If a patient has more complex issues it may take longer
- Body monitoring programmes include MRI scanning consultation and physical and psychological examination.
- Opportunity to discuss patient's concerns privately with an expert.
- The Health Screening services provides patients with up to date, accurate and detailed information about current state of being.
- Personalised recommendations on healthier lifestyle
- Cancer prevention program introduces medical and psychological interventions to reduce risks of disease.

[Learn more about London Integrated Health services](#)



9 Harley Street

9 Harley Street provides a comprehensive range of services, consolidating specialist consultations, diagnostics, and imaging within a single facility for streamlined assessments. Patients benefit from access to top-tier specialists and the highest standards of care under one roof. The clinic's commitment to scientific excellence is evident through its use of state-of-the-art technology and adherence to internationally recognized quality standards. The clinic prioritizes patient convenience and clinical excellence in delivering comprehensive healthcare solutions.

Address

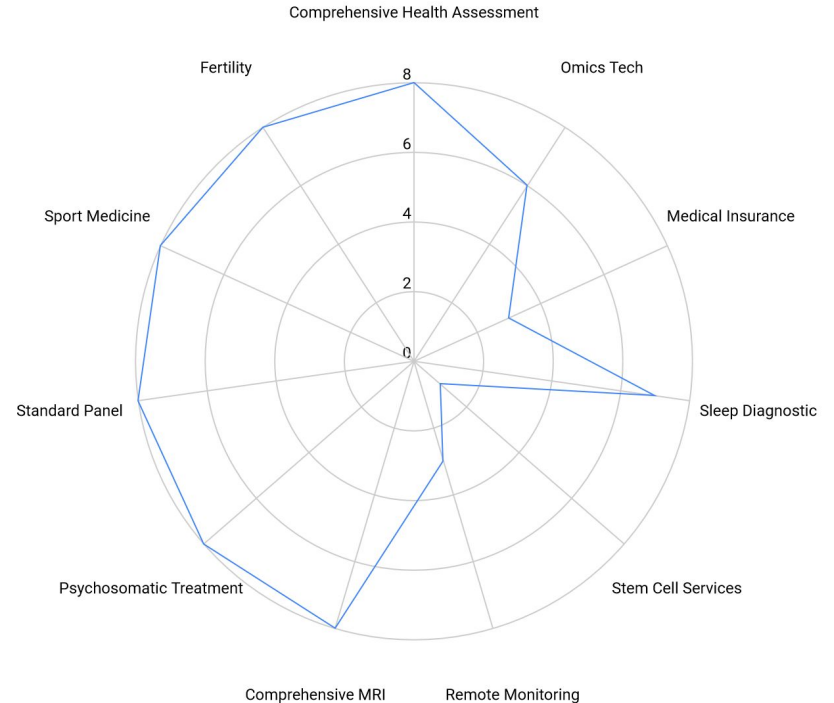
9 Harley Street, London

Pricing

Health Assessment - £495

Advantages

- 9 Harley Street boasts an extensive array of specialists and services, ensuring minimal wait times for appointments.
- Utilizing cutting-edge techniques, we offer the latest advancements in healthcare.
- Comprehensive diagnostics



Procedures at 9 Harley Street

Diagnostics	Price	Description
Consultations	varies	Clinic offer access to expert consultants who are leaders in their field, ensuring that patients feel fully reassured every step of their journey.
Diagnostic	varies	Offers a variety of Health Screening options meticulously crafted to detect early signs of illness, maximizing the likelihood of effective treatment. Each screening option is fully customizable to meet individual needs, allowing customers to select from three packages tailored to their requirements.
Treatments	varies	All specialists seeing patients at 9 Harley Street Clinic have fulfilled rigorous eligibility criteria used to ensure patients receive the highest possible standard of care. All are independently vetted and must achieve the highest standards set by Medical Advisory Committee.
Fertility	varies	Convenient treatment options to patients after a close diagnosis and investigation of the relevant Sexual issues. A wide range of screening, diagnostic, prenatal, surgical and therapeutic services.

Lab Packages

Varies

9 Harley Street facility is driven by scientific expertise and outfitted with state-of-the-art analyzers, enabling us to deliver precise and prompt results for blood tests. All tests offered adhere to internationally recognized quality standards and are enrolled in accredited quality assurance programs.

Patient Can Expect:

- Consultations typically span approximately 40 minutes, with flexibility for patients facing more intricate concerns.
- Full Body monitoring programs incorporate components for nutritional health, women's and men's health
- MRI scanning consultations and physical examinations, providing patients a confidential platform to discuss their worries with an expert.
- Private Health Screening services furnish patients with up-to-date, precise and comprehensive insights into their health status
- Personalised advice on healthier lifestyles adopting.
- Neurologists are on hand to offer personalized guidance in deciphering this wealth of information, instilling confidence in patients' health choices.

[Learn more about 9 Harley Street services](#)

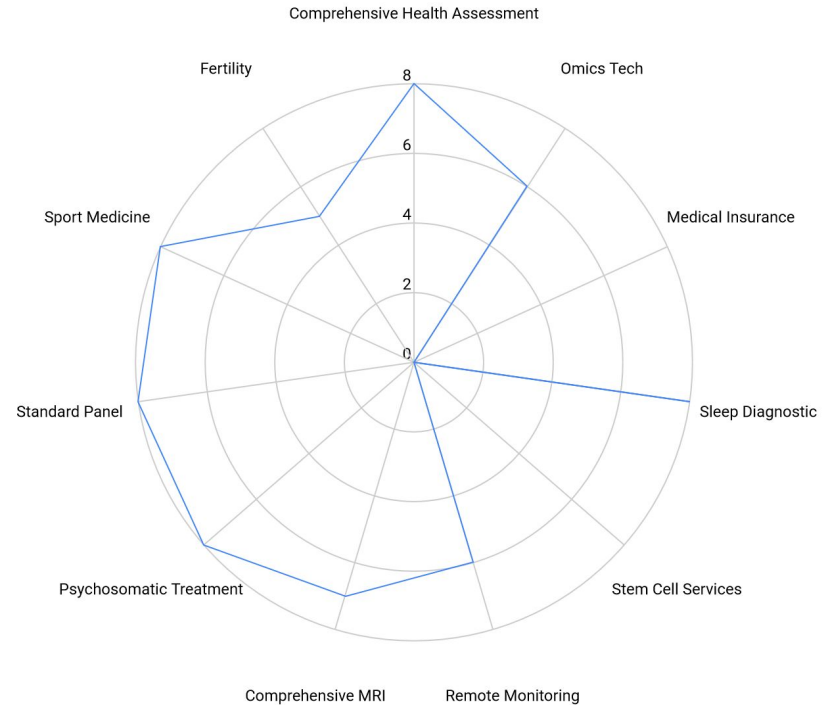


Marylebone Health Group (CHHP) offers advanced health assessments tailored to sport medicine, sexual health, and rehabilitation needs, aiming to optimize well-being and reverse the aging process. The clinic's focus on comprehensive screenings enables patients to gain insights into their current health status and receive personalized guidance for improving their overall lifestyle. Through a combination of cutting-edge diagnostics and specialized treatments, Marylebone Health Group (CHHP) strives to empower individuals to achieve their health and performance goals.

Address | 76 Harley Street,, London

Pricing | Health Assessment from £250

- Advantages**
- The London’s Centre for the optimisation of healthcare, prevent and treat conventional disorders, traumas.
 - The most advanced and modern techniques
 - Clinical assessment of a patient’s current metabolic and physical state





Procedures at Marylebone Health Group (CHHP)

Diagnostics	Price	Description
Consultations	varies	Consultation types include specialist consultations, control strength, nutrition, rehabilitation and prescription without consultation
Diagnostic	varies	While Clinic's programmes may include objectives such as screening for cancer, heart disease and dementia risk etc. specialist investigations and imaging are normally not included, though clinic can include very comprehensive blood panels and cardio-respiratory and metabolic health and performance testing as standard.
Treatments	varies	The clinic offers specialized treatments designed to optimize performance, support mental well-being, and prevent injuries across various domains, from Executive Performance plans tailored to enhance productivity to Executive Mindset packages providing psychological support.
12 weeks Program	varies	Convenient treatment options to patients after a close diagnosis and investigation of the relevant gynaecological issues. A wide range of screening, diagnostic, surgical and therapeutic services.

Lab Packages

Varies

Marylebone Health Group packages offer a comprehensive assessment of patient's health. The clinic have been specifically designed to screen for the most relevant sport, mental and sexual and health issues.

Patient Can Expect:

- A consultation usually takes 20-30 minutes in most cases. If a patient has more complex issues it may take longer
- Body monitoring programmes include heart and lungs scanning, sleep monitoring, consultation and physical examination.
- Opportunity to discuss patient's concerns privately with wide range of experts.
- The Health Screening services provides patients with up to date, accurate and detailed information about current state of being.
- Personalised recommendations on a healthier lifestyle
- A dietician can help to sort through all of this information on an individual basis, giving patients the confidence that they are eating healthily

[Learn more about Marylebone Health Group \(CHHP\) services](#)



Health Screening Clinic

Health Screening Clinic provides comprehensive health assessments and guiding individuals towards improved well-being and longevity. Through advanced diagnostics and personalized recommendations, the clinic assists patients in addressing current health concerns and proactively managing their overall wellness. With a focus on preventive care and cutting-edge techniques, Health Screening Clinic prioritizes the prevention and reversal of chronic diseases, offering advanced medical solutions tailored to individual needs.

Address

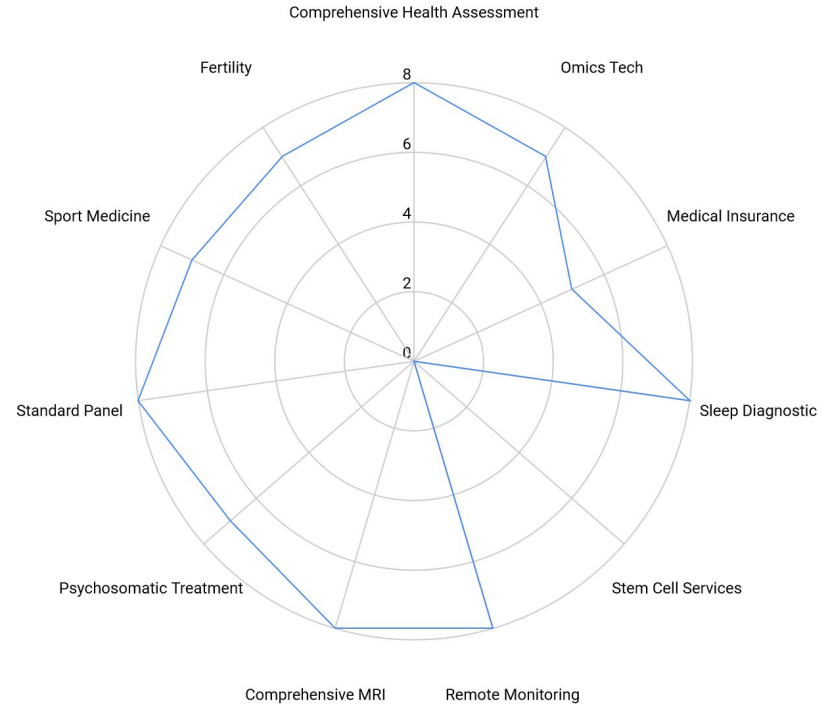
117a Harley Street, London

Pricing

Longevity Assessment starts from £2000

Advantages

- Health Screening Clinic provide the prevention and reversal of chronic diseases
- The most advanced and modern techniques
- Clinical assessment of a patient's current mental and physical state



Procedures at Health Screening Clinic

Diagnostics	Price	Description
Consultations	varies	Consultation types include specialist consultations, unlimited in time standard consultations, customer support with digital health platform.
Diagnostic	varies	Clinic provides full body health check ups for patients. Packages will cover your entire body along with liver, kidney and heart health, stroke risk, general health markers including diabetes, protein, cholesterol, muscle mass and much more for both women and men health checks.
Treatments	varies	The clinic provides specialized treatments tailored to enhance performance, promote mental well-being, and prevent injuries in a variety of areas such as sports, work, and everyday activities. The goal is to optimize your overall health and support customer in reaching peak potential in all aspects of life.
Premium Program	varies	Different programs such as Longevity, Fertility and Immune offer to patients after a close diagnosis and investigation of the relevant issues.

Lab Packages

Varies

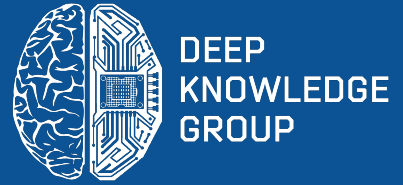
Health Screening Clinic packages offer a comprehensive assessment of patient's health. The clinic have been specifically designed to screen for the most relevant health issues seen and has valuable of experience of general practice work.

Patient Can Expect:

- A consultation usually takes 30 minutes in most cases. If a patient has more complex issues it may take longer
- All Full Body monitoring programmes include MRI scanning consultation and physical examination.
- The opportunity to discuss patient's concerns privately with an expert
- The private Health Screening services provides patients with up to date, accurate and detailed information about current state of being.
- Personalised recommendations to lead a healthier lifestyle
- A range of Longevity programs

[Learn more about Health Screening Clinic services](#)





Additional Longevity Services on Harley Street

Concept of Additional Longevity Services

Concept of Additional Longevity Services

Additional Longevity services are Longevity services that are recommended for Longevity Check-Up in addition to advanced procedures and tests. They can reveal a bigger picture about the patient's health and show problems in more specific areas of human well-being.

Places that offer Additional Longevity Services

Additional longevity services can be found not only in longevity clinics but also in hospitals of general medicine, specialised clinics, diagnostic centres and laboratories. Patients benefit from completing additional procedures and tests in specialised clinics as they can receive a more specific and broad assessment on needed services.

Biobanks

Further, patients can donor and store or receive biological material (DNA, cells, tissue, etc.) in particular Biobanks or Clinical and hospital-based biobanking. Biobanks play an increasingly important role in healthcare research and delivery as health systems become more patient-centered, and medicine becomes more personalised.

Cell and bio materials storage

Biopsy for fibroblasts and their storage, Baby teeth, Umbilical cord blood, Sperm and eggs, Mesenchymal cells, Embryos, Cryobanks

List of Additional Longevity Services

Breast Ultrasound + Mammography

Kidney Function Test

Liver Function Test

Tumors Marker (PSA, CEA, AFP)

Mesotherapy

Cervical Cancer Screening (Gynecologist)

Comprehensive Geriatric Treatment

Hair Transplants/Consultation

Levels of Additional Longevity Services*



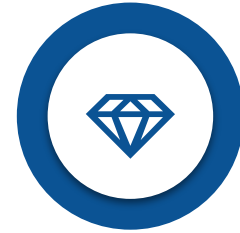
BASIC

Basic entry-level is recommended in order to take advantage of the most basic services. Opt for the basic entry-level package to access essential services and get started on your health journey.



ADVANCED

Advanced level is a more comprehensive package with an expanded range of services at a higher price. Upgrade to the advanced level for an extensive array of services tailored to meet your specific health needs.



PREMIUM

Premium level, comprising of the same services as Advanced, in addition, offers extra class services. The premium level delivers unparalleled services and personalized attention to optimize your well-being.

*based on price

Additional Services

Basic



London Stem Cell Centre

164-168 Cromwell Road,
Kensington, London

London Stem Cell Centre is a regenerative medicine clinic offering minimally invasive, cellular treatments for musculoskeletal conditions.

- Bone Marrow Aspirate Concentrate (BMAC) injections is used to treat or augment a wide range of orthopaedic conditions and injuries.

Advanced



Harley Street Specialist Hospital

18-22 Queen Anne Street,
London, W1G 8HU

Harley Street Specialist Hospital offers the latest regenerative treatments from our base off Harley Street in London, using the very latest technologies.

- Activated Mesenchymal Pericyte Plasma (AMPP) injections. AMPP harnesses the body's natural ability to repair damage using cells and factors extracted from adipose fat tissue and blood.
- Bone Marrow Aspirate Concentrate (BMAC) uses regenerative stem cells found in bone marrow to support healing in patients with moderate to severe osteoarthritis as well as tendon injuries.

Premium



The OrthoBiologics Clinic

London Orthopaedic Clinic
1st Floor, King Edward VII's Hospital,
5-10 Beaumont St, London

The OrthoBiologics Clinic is one of the first clinics in the UK to offer revolutionary new ACP-SVF Cell Therapy for arthritic joint pain and tendinopathies, which combines the advantages of an increased concentration of healing growth factors in PRP and regenerative cells that are derived from body fat (adipose tissue).

- Regenerative Cell Therapies (ACP-SVF Cell Therapy, BMAC Therapy) - from £5000

Additional Services

Basic

Lipid Blood Test
Profile £ 55



BLOOD.LONDON

Private Blood Tests London

Suite E, 117a Harley St, Marylebone,
London, W1G 6AT

Lipid profile testing assesses risk of developing cardiovascular disease (CVD), heart disease and stroke for transporting cholesterol and triglycerides in the blood. Lipid profile testing provides the result to the levels of the following:

- total cholesterol
- high-density lipoprotein
- low-density lipoprotein
- triglycerides.



Concept Fertility Clinic
Delivering New Life

Advanced

£450 - £11,250

Concept Fertility Clinic

14 Point Pleasant,
Wandsworth Park,
London, SW18 1GG

Concept Fertility Clinic helps extend or preserve your fertility period through egg freezing. Unlike eggs, sperm can be frozen and stored indefinitely. At Concept only vitrification is used for both embryo and egg freezing.

- Annual sperm/eggs/embryos storage - £650-725
- First sperm freeze (including 1 year storage) - £400
- Embryo cryopreservation (including storage for up to 1 year) - £4695
- Egg freezing treatment cycle (including 2 year storage) - £4950



CAREfertility

Premium

£1,395 - £20,000

CARE Fertility London

Park Lorne, 111 Park Rd,
London, NW8 7JL

At CARE Fertility exclusive egg freezing package is available (EGGsafe) that allows to store and keep 20 eggs (up to 4 cycles to collect eggs if required).

- Annual sperm/eggs storage - £1395
- Embryo freeze (excluding storage) - £1395
- Egg preservation - one cycle - £4150
- EGGsafe - multicycle - £7000

Additional Services

Basic
£2820



MRI Scans London
19 Harley Street, London, W1G 9QJ

- Pre-assessment consultation with a specialist doctor
- MRI (brain, carotid arteries, abdomen, pelvic, cardiac)
- ECG, exercise ECG treadmill test, echocardiogram
- Blood test (more than 50 markers), urinalysis
- Follow-up consultation for discussion of your results, medical report

Advanced
£3760 for men
£4160 for women



London Harley Street Practice
66 Harley Street, London, W1G 7HD

- Full body composition, 10 year calculation risk of cardiovascular event
- Diabetes and cholesterol (lipid) full profile, vitamin D profile, thyroid function tests
- Male hormone profile, prostate profile, pesticular cancer (AFP) OR
- Female hormone profile, ovarian cancer early detection blood tests and breast cancers, cervical smear
- Blood tests, urine analysis
- ECG
- Spirometry, audiometry
- Whole MRI body scan
- Personalised report and 30 minute follow up appointment

Premium
£7000



Preventicum
London Centre of Preventive Medicine

Preventicum
The Cursor Building, 38 Chancery Lane, London, WC2A 1EN

- Consultation and physical examination with a Preventicum doctor, vital observations
- Over 50 blood tests and urine analysis
- MRI scans of your brain, heart, central arteries and organs of the abdomen and the pelvis as well as a whole spinal scan including your cervical, thoracic and lumber spine
- Ultrasound examinations
- ECG
- Spirometry (lung function test), body composition analysis, audiometry (hearing test), tonometry (glaucoma/eye test)
- Results consultation, follow-on consultation (6 months after assessment)

Sport Diagnostics

Basic
£55



East London Physiotherapy & Sports Medicine

VeloPark, Abercrombie Road,
London, E20 3AB

East London Physiotherapy & Sports Medicine is owned and operated by Health Consultants Incorporated, a company dedicated to health and humanity:

- Physiotherapy
- Initial assessment, diagnosis & treatment
- Sports injury treatment
- Massage Therapy
- Research of muscle strength and spine flexibility
- Provide Workplace Injury Prevention

Advanced
£150



ESPH

116 Lordship Lane LONDON,
GB

ESPH is one of the UK's leading providers of sport medicine services who works both privately and with the NHS to help people experiencing physical difficulties to get better. Clinic's services:

- Research of hematological factors
- Workstation Assessment
- Sports injury treatment
- Sports Massage

Premium
£275



Pure Sports Medicine

116 Cromwell Rd, London,
SW7 4XR

Pure Sports Medicine provides excellence in the diagnosis, prognosis and treatment of sports injuries and illnesses to both elite athletes and exercise enthusiasts:

- Initial assessment, diagnosis & treatment
- Sports injury treatment
- Bike Fit Service
- Physical level assessment

Sleep Diagnostic

Basic
£100



London Doctors Clinic

At London Doctors Clinic new virtual wellness screens utilize the latest health monitoring technology and allow team of medical experts to monitor patient's health and wellbeing via a cloud portal. The assessment utilizes wearable technology to provide an in-depth view of patient's health over a 4-week period. Oura ring is provided on loan to collect data with results analyzed by sleep experts.

Advanced
£300 - £325



S&HC

Sleep and Health Clinic

Weymouth Street Hospital, The London Clinic, HCA The Waterfront Elstree Outpatient Center, Royal National ENT and ED Hospital

Sleep and Health Clinic provides PSG package – first consultation, PSG and follow-up included. Polysomnography allows to assess sleep quality and actual sleep time as well as leg movements, abnormal behaviours and breathing during the night. Sleep Apnoea Package - first consultation, ambulatory home sleep study, follow-up consultation. Ambulatory sleep study includes heart rate monitoring, oxygen saturation monitoring and assessment of breathing effort. The equipment is portable, and the study can be performed at home.

Premium
£1725 - £2300



The Private Patients Unit at the Royal Free Hospital

Private Patients, Royal Free Hospital, Pond Street, London, NW3 2QG

The Private Patients Unit at the Royal Free Hospital provides diagnostic during which sleep study specialists make overnight recordings of:

- oxygen levels
- heart rate
- sleep position
- breathing effort

Using a portable sleep diagnostic device (WatchPAT) the sensors are attached and then the patient is allowed to fall asleep as they wish. When sleeping, the sensors monitor breathing patterns and oxygen levels with the information being sent to a computer.

Psychosomatic Treatment

Basic

from £125 per one hour therapy



Harley Psychiatrists

23 Harley Street, London, W1G 9QN

Harley Psychiatrists – leading London psychiatric team of experienced professionals. Assessments, evaluations and treatment: attention deficit hyperactivity disorder (ADHD), anxiety, panic and stress, autism, obsessive-compulsive disorder (OCD), borderline personality disorder, bipolar disorder.

Possible treatment routes include psychiatric treatment to target specific symptoms, psychological intervention (e.g. cognitive behavioural therapy) and lifestyle adaptations.

Advanced

from £350 per one hour therapy



London Psychiatric Clinic

1-7 Harley St, London W1G 9QD
171 Clarence Ave, London, New Malden KT3 3TX

London Psychiatric Clinic specialises in assessment and treatment for the full range of psychiatric disorders: anxiety, depression, panic disorder, schizophrenia, phobias, OCD, eating disorders, post-traumatic stress disorder (PTSD), attention deficit hyperactivity, ADHD, hypochondriasis, bipolar affective disorder, body dysmorphic disorder (BDD).

Premium

from £750 per one hour therapy






London Psychiatry Centre / rTMS Clinic

72 Harley Street, London, W1G 7HG

London Psychiatry Centre offers an innovative integrated full service addressing every need associated with mental health. Clinic's services: treatment of addiction, ADHD, anxiety, bipolar, depression, early intervention cardiology, seasonal affective disorders (SAD), trauma; endocrinology, genetic testing for better mental health, marital/couples therapy, perinatal mental health, external trigeminal nerve stimulation (eTNS), eye movement desensitization and reprocessing (EMDR) therapy, treatment using rTMS.

Cardiovascular Health Assessment Services in London

Basic £1100	 <p>London Centre for Advanced Cardiology Third Floor, 19 Harley Street, London, W1G 9QJ</p>	<ul style="list-style-type: none">• Consultation with a cardiologist• Cholesterol profile blood test• ECG test, exercise treadmill test• Echocardiogram (heart ultrasound)• CT heart scan (coronary calcium score)• Full medical report, telephone follow-up appointment with doctor
Advanced £1650	 <p>Cardiac Screen Balppa House, 57-61 Newington Causeway, London, SE1 6BD</p>	<ul style="list-style-type: none">• Consultation with a cardiologist• Resting electrocardiogram (ECG), exercise treadmill ECG• Echocardiogram (heart ultrasound)• Cardiovascular risk profile (cholesterol, HDL cholesterol, LDL cholesterol, triglycerides)• General chemistry blood profile (kidney/renal profile, liver function profile, fasting blood sugar level, C-reactive protein)• Full blood count, thyroid profile, routine urine, vitamin D• Prostate profile (PSA)• Ambulatory ECG, cardiac event monitor, ambulatory blood pressure monitoring (ABPM) at extra charge
Premium £1900	 <p>LycaHealth 1 Westferry Circus, Canary Wharf, London, E14 4HA</p>	<ul style="list-style-type: none">• Consultation with a cardiologist• Resting ECG• Blood test (including cholesterol, diabetes, thyroid, kidney and liver function)• Echocardiography (heart ultrasound)• CT coronary angiogram (including calcium scoring- an examination of the heart arteries)• Follow-up appointment with consultant cardiologist

Cancer Screening Services

Basic
from £250



Harley Street Health Centre

Harley Street Health Centre

13 Queen Anne Street, London,
W1G 9JH
33-34 Bury Street, London,
EC3A 5AR

Harley Street Health Centre offers a range of blood tests that screen for the markers of certain types of cancer.

- CA 50, for bladder & colorectal cancer
- CA 19-9, for cancer of the GI tract, colorectal cancer, & pancreatic cancer
- CA 15-3, for breast cancer

Advanced
£510



MOORE MEDICAL PRACTICE

Moore Medical Practice

First Floor College House,
272 Kings Road, Chelsea,
London, SW3 5AW

Moore Medical Practice offers a range of cancer screening tests, which tailored to patient's particular risk profile.

- Examination of breast, prostate, testicles, abdomen and lymph nodes
- Mole check
- General blood test for haematology and inflammatory markers
- Specific blood testing for a range of tumour markers
- Urinalysis
- Faecal immunochemical testing
- Cervical smear and HPV test
- Written report and recommendations

Premium
each from £1200



LONDON
GENERAL
PRACTICE
LEADERS IN
MEDICAL EXCELLENCE

The London General Practice

114a Harley Street,
London, W1G 7JL

The London General Practice offers access to the latest, high-tech, cutting-edge diagnostic tests available in Harley Street and its environs.

- Breast cancer screening
- Prostate and testicular cancer screening
- Bowel cancer screening
- Lung cancer screening

Immune System Assessment

Basic
£125



VisitHealth

David Game College, 31 Jewry St,
London, EC3N 2ET

The Immune System Check-Up package is the key biomarkers involved in the functioning of body's natural defense mechanism.

This package helps to understand the quantity of the main cells involved in immune defense system, as well as get a NLR ratio to assess physiologic stress level. Essentially, this package provides an overview of how effectively the immune system is working.

- Immune system check-up (full blood count, neutrophil-lymphocyte ratio, vitamin D) - £95

Advanced
£75 - £300



**Blood Tests in London | Blue Horizon
Medicals**

76 Wimpole Street, London,
W1G 9RT

- Hepatitis B surface antibodies
- Hepatitis B surface antigen (HbsAg)
- IgG Immunity blood test profile 1
- IgG Immunity blood test profile 2
- IgG Immunity blood test profile 3
- IgG Immunity blood test profile 4
- IgG Immunity blood test profile 5
- IgG Immunity blood test profile 6

Premium
£600



Private Blood Tests London

Suite E, 117a Harley St, Marylebone,
London, W1G 6AT

Private Blood Tests London has a great reputation for delivering outstanding value for an extensive range of private blood tests in London's Harley street.

- Immune function evaluation (total) - £ 600

Dental Check-Up Services in London

Basic
£50



Vitality Dental London
111 Philip Lane, London, N15 4JR

At Vitality Dental London dentist assess include: occlusion, jaw (assessing your jaw movement and jaw related muscles), oral cancer screening (soft tissue assessment), lymph nodes and neck, tongue and lips (for diagnosis purposes), gum health, assessment of risk factors, teeth and signs of potential problems.

Advanced
£70



London Dental Centre
109 Lever Street, London, EC1V 3RQ

At London Dental Centre in the examination dentist thoroughly examines teeth, gums and mouth and takes x-rays if required. Then dentist will discuss any general health, dietary issues and general teeth-cleaning habits. Also doctor will be able to advise and recommend any improvements where possible, suggest additional treatment and will provide patient with a full treatment.

Premium
£ 300



Harley Street Dental & Implant Clinic
90 Harley St, London, W1G 7HS

Harley Street Dental & Implant Clinic dentist performs a comprehensive examination of patient's mouth, teeth and gums; examines the health of the soft tissue in mouth (cheeks and tongue); tests gums for any signs of gum disease and remove any plaque or harmful tartar; takes an x-ray of teeth. As well as teeth cleaning and oral health analysis, dentist will also offer mouth cancer screening and offer advice and guidance on continued and improved dental care.

Electrolyte Blood Test

Basic
£70



DocTap
11 London clinics

An electrolyte panel, also known as a serum electrolyte test, is a blood test that measures levels of the body's main electrolytes. Abnormal levels electrolytes can be a sign of a serious health problem, including kidney disease, high blood pressure, and a life-threatening irregularity in heart rhythm.

At DocTap in London electrolyte blood test profile measures levels of electrolytes: Sodium, Potassium, Chloride, Bicarbonate, Urea, Creatinine.

Advanced
£80



London Doctors Clinic

The Urea and Electrolytes blood test, otherwise known as a kidney function test, is routinely used to monitor the body's electrolyte balance and can also give a strong indication of renal function. It measures levels of a range of elements and molecules found in the blood, that are filtered out into the urine by the kidneys.

At London Doctors Clinic electrolyte blood test profile measures levels of electrolytes: Sodium, Potassium, Chloride, Bicarbonate, Urea, Creatinine.

Premium
£100



Blood Tests in London|Blue Horizon Medicals
76 Wimpole Street, London,
W1G 9RT

Electrolyte measurements are used to screen for an electrolyte or pH imbalance and to monitor the effect of treatment on a known imbalance that is affecting bodily organ function. Electrolyte levels are affected by how much is taken in through your diet, the amount of water in your body, and the quantity of electrolytes excreted by your kidneys. They are also affected by hormones, Knowing which electrolytes are out of balance can help healthcare professional determine the cause and treatment to restore proper balance.

At Blood Tests in London electrolyte blood test profile measures levels of electrolytes: Sodium, Potassium, Chloride, Bicarbonate.

Medical Services in London

Basic

£125+



Biolab Medical Unit

Biolab Ltd The Stone House, 9
Weymouth St, London W1W 6DB

The clinic offers several professional medical services and comprehensive blood analysis:

- Blood-Based Oxidative Stress Markers
- Antioxidant Profile
- Antioxidant Blood Test Profile



Advanced

£350+

Doc Tap

John Bell & Croyden, 50-54 Wigmore
St, London W1U 2AU

The clinic offers several professional medical services and comprehensive blood analysis:

- Blood-Based Oxidative Stress Markers
- Antioxidant Profile
- Antioxidant Blood Test Profile



Premium

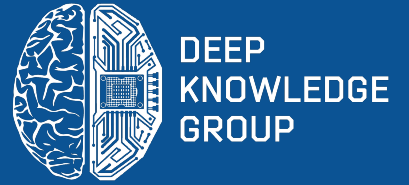
£425

Blood Tests in London Blue Horizon Medicals

76 Wimpole Street, London,
W1G 9RT

The clinic has multiple services available. The clinic is always available, either online, or on the phone, 9am - 5pm Monday to Friday. Blood-Based Oxidative Stress Markers:

- ORAC Assay (The Oxygen Radical Absorbance Capacity)
- Antioxidant Blood Test Profile
- Blood-Based Oxidative Stress Markers



Harley Street Longevity Club

Proposal Overview

Harley Longevity Club AI-driven Big Data Analytics System, Tailored Dashboard Constructor

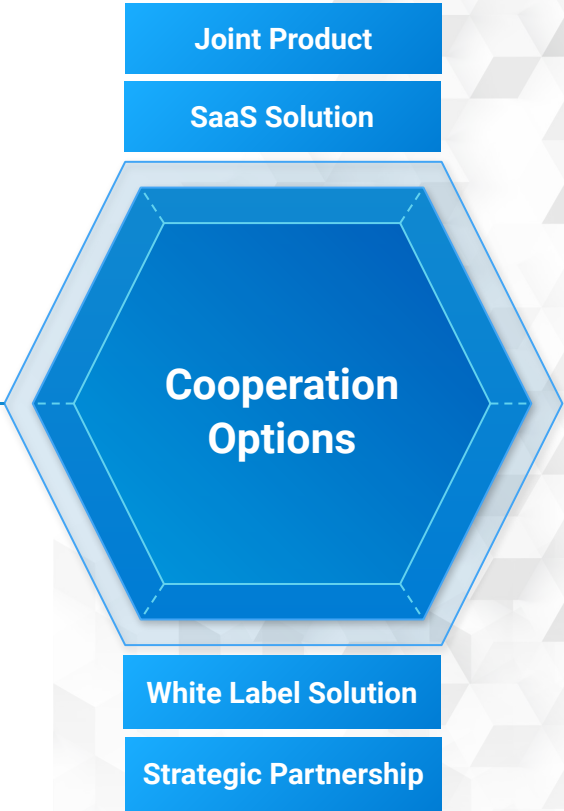
Market Intelligence, SWOT, Comparative, Competitive Quantified, Qualified Analysis

Complex Data Analysis: Synthetic Operational Environment and Advanced Dynamic Visualisation

Customized Analytics, Specific Industry Segments Monitoring, Most Advanced R&D Domains

Automated Business Development, Partnerships Facilitation, AI-driven Smart Matching System

Automated Competitors Landscape Monitoring (R&D, M&A Deals, Investment, Financial Transactions)

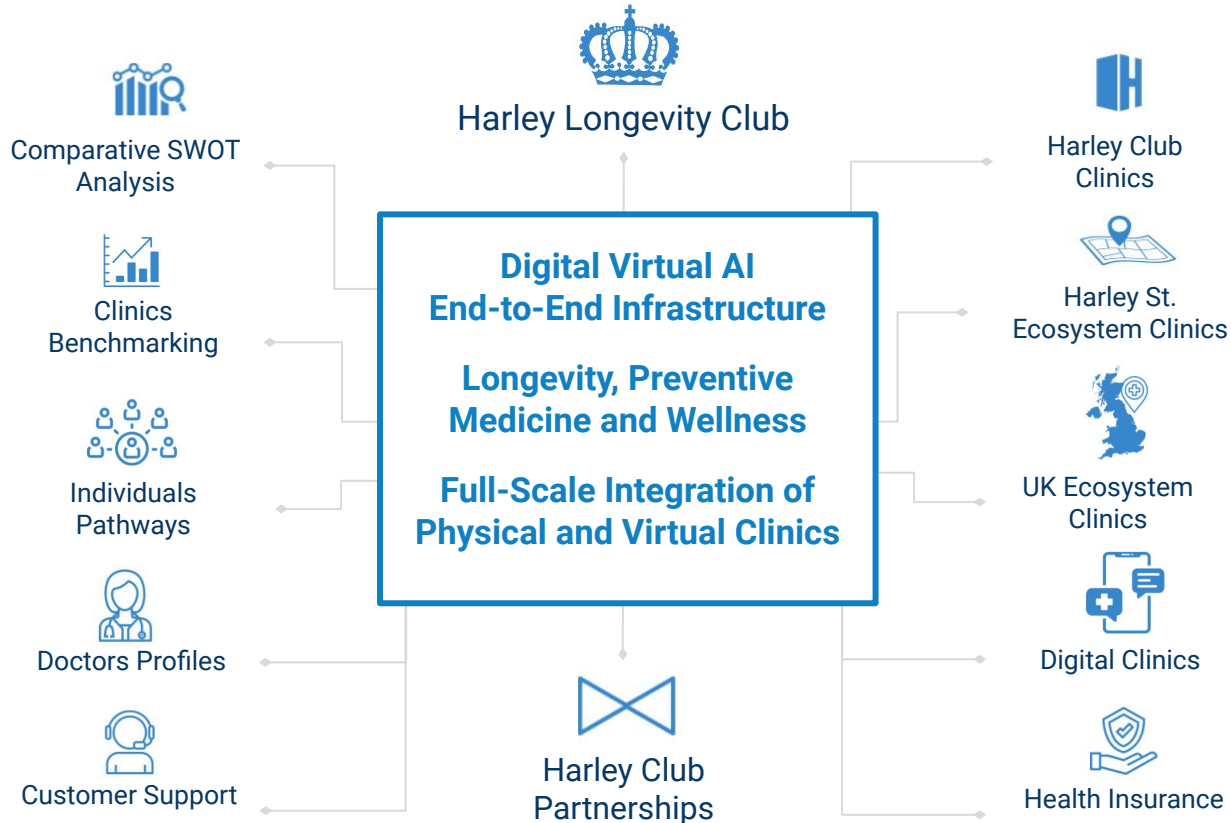


Harley Longevity Club Initial Offer

- The HSC clinics ecosystem comprises physical facilities located at the prestigious Harley Street in London and an additional 9 Aesthetics, Precision Medicine and Wellness clinics located across the UK, with prospects to expand in a number of other regions, including Dubai among others
- It has been a sustainable revenue-generating business for 20 years, with exceptional experience, expertise and assets in the operation of state-of-the-art Precision Medicine, Aesthetics and Wellness clinics, as well as a wide variety of other modalities
- HSC is aiming to develop into a full-scale end-to-end ecosystem and establish itself as the undisputed leader in the UK in the field of Longevity, Preventive Medicine and Wellness Clinics Healthy Longevity and Longevity Medicine Clinics internationally, starting with the UK
- One major target for Harley Street Club's further expansion is the acquisition of additional digital, virtual and AI infrastructure integrated with web and mobile apps to complement its excellent physical clinics ecosystem
- For this matter, HSC has signed a preliminary agreement with Longevity Club for the delivery and maintenance of an end-to-end White Label Solution based on a long-term license contract (2 years duration). *This composite solution is guaranteed to be the most comprehensive and advanced of its kind in the world, giving asymmetric strategic competitive advantage for Harley Street Club to achieve its expansion goals in a substantially accelerated mode*



Harley Longevity Club



Longevity Suitcase



A 10 kg travel case packed with devices for on-the-go Longevity Diagnostics and Treatments.

Sleeping Room



The Sleep Room Blueprint enhances sleep with advanced technologies

Longevity Room



The Longevity Room Blueprint offers a comprehensive approach to well-being, health and longevity.

Individual Blueprint

Longevity Kitchen



Longevity Kitchen is a hub of health-conscious practices and cutting-edge innovations

Investment Opportunity

Pre-A-Round (£3 million at no less than £30 million valuation, minimum cheque size £500,000)

- Longevity Club Project has been initially funded by Deep Knowledge Group to implement MVP
- Longevity Club is now seeking bridge financing to accelerate implementation of the Version 1.0 in completed configuration and its delivery to Harley Street Club as a strategic partner
- In Q3 2024, Longevity Club will be planning to substantially expand its activities and to conduct Round A investment at an estimated valuation of no less than £30 million
- A convertible note in the amount up to £3 million will be issued by Longevity Club to dedicated SPV (limited partnership incorporated in the UK)
- SPV essential will be a dedicated investment vehicle systematically providing bridge financing to Longevity Club between major investment rounds, and with that will enjoy preference over subsequent investors
- Terms of convertible debt note are: 3 years timeline with 20% discount compared to Round A valuation
- Participation available to limited partners in the SPV co-investment syndication with a minimum cheque of £200,000, considering the limitation of maximum 15 LPs in the SPV

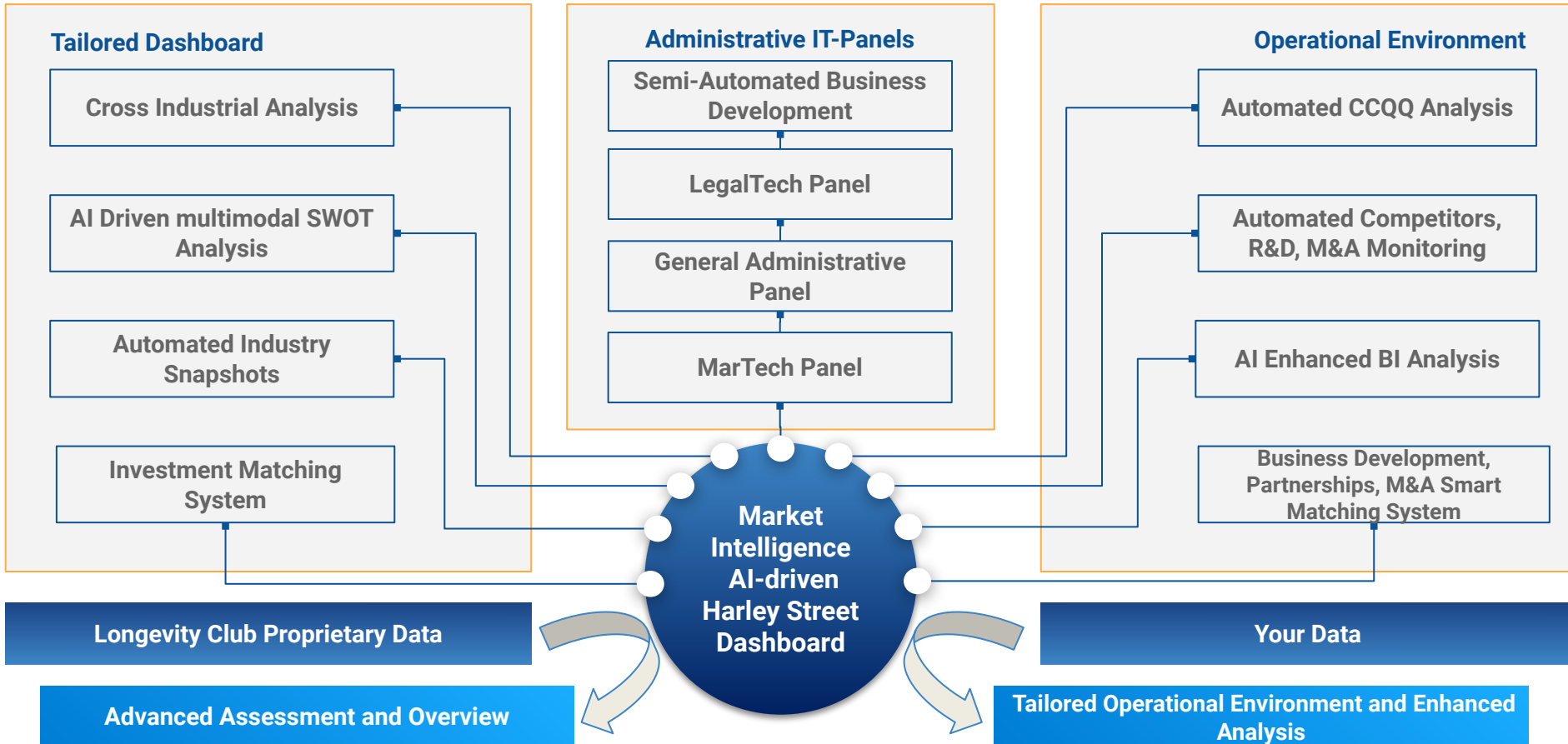
20% Discount Preference Over Subsequent Investors

Harley Longevity Club Business Model

- 1. B2C Longevity, Precision Medicine and Wellness Clinic Services:** Subscription memberships which give clients of Harley Street Club access to its state-of-the-art physical facilities and ecosystem of Longevity Medicine, Precision Medicine and Wellness clinics, its broader composition of specialised medical clinics, and its upcoming digital virtual Longevity, Precision Medicine and Wellness infrastructure fully integrated with web platforms, mobile apps and AI copilots
- 2. B2B Integration into Harley Street Club Clinics Ecosystem:** Providing access and integration of other additional narrowly-focused clinics and individual doctors into the Harley Street Club physical and virtual ecosystem, for a fee (as vendors)
- 3. Franchising:** Establishing additional clinics and regional branches of Harley Street Club on a franchise agreement basis
- 4. Integration with Large Corporate Clients:** Enabling access to and integration with Harley Street Club's physical and virtual Longevity, Preventive Medicine and Wellness clinics ecosystem and infrastructure for large corporate clients (such as healthcare insurance companies, and also big employers aiming to implement internal Healthy Longevity corporate programs)



Market Intelligence | Automated Business Development | Operational Environment Analysis



Component 1

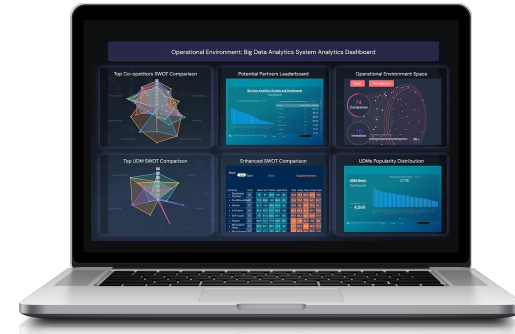
Each proposition is tailored for specific client needs and is fine tuned to according to their desired outcomes. As the scope of system functionality and types of analysis can be modified based on client specifications, cooperation terms and conditions are negotiable.



Harley Longevity Club

- ➔ Comprehensive Harley Street Clinic Insights
- ➔ Deployment of Advanced Analytics and Market Intelligence
- ➔ Operational Environment-Based Ecosystem Mapping
- ➔ Customizable Insights for Competitive Edge
- ➔ Integration with Proprietary Data for Enhanced Solutions
- ➔ Capabilities Demonstration of Analytical Platforms
- ➔ Historical Evolution and Global Appeal of Harley Street
- ➔ Influence on Economic Growth and Medical Innovation

Component 2



Global Medical Clinics Big Data Analytics System and Dashboard

- ➔ Ecosystem Analysis and Mapping Based on Operational Environment
- ➔ Automated Entities Validation and Clustering
- ➔ Industry Roles Evaluation
- ➔ Ecosystem Development Projections
- ➔ Strategic Insights on Potential Matches
- ➔ Partners And Competitors Profiles and Pipelines
- ➔ Other Features

Harley Street SWOT Analysis

Clinic	Website	Address	Number of reviews	Avg review score	Working hours	Category
Dr A S Goodstone - Marylebone	www.labiaplastyclinic.com	Heron House, 17 Mar	1	5	Mo-Fr 18:30-20:00, Sa-Su 8:00-20:00	Med Clinic
Labiaplasty Clinic	www.labiaplastyclinic.com	69 Harley St	1	5	Monday-Friday: 9am-5pm, Saturday: Closed, Sunday: Closed	Wellness Clinic
Private GP London	www.gp.london	Suite 4, 117A Harley S	1	5	Monday-Friday: 8am-7pm, Saturday: 9am-5pm, Sunday: Closed	Med Clinic
Cataract Surgery, Moorfields Lom	https://www.shu	Moorfields Private Eye	1	5	Monday-Friday: 8am-6pm	Med Clinic
Cavendish Osteopaths	https://www.tosteo	45 Queen Anne St, Lc	1	5	Monday-Friday: 8am-7pm, Saturday: 9am-1pm	Private Practice Office
Deora Clinic	www.deoraclinic	4th Floor, 86 Harley St	1	5	Monday-Friday: 9am-5pm, Saturday: Closed, Sunday: Closed	Wellness Clinic
Dr Diana Holdright	https://www.dr-d	13-14, The Harley Str	1	5	Monday - Thursday 8:30 AM-5 PM	Private Practice Office
Dr Ellie Sateei	https://dr.elliesa	91a New Cavendish S	1	5	Monday-Wednesday: 9am-5pm, Friday: 9am-1pm	Private Practice Office
Dr George Roman	www.drgeorgeroman	43 Devonshire St	1	5	Mo-Fr 9:00-19:00	Private Practice Office
Harley Cosmetic Group Clinic	www.harleycosmetic	41 Harley St	1	5	Monday-Friday: 8am-7pm, Saturday: Closed, Sunday: Closed	Wellness Clinic
Harley Street Andrology	www.andrology.co.uk	16 Devonshire St	1	1	Mo-Fr 9:00-17:00, Sa 9:00-13:00	Med Clinic
London Heart Practice	https://londonh	78 Harley Street, Lon	1	5	Monday-Friday 9 AM-8 PM	Wellness Clinic
Moorfields Private Eye Centre	https://www.mpc	50-52 New Cavendish	1	5	Monday-Friday: 8am-6pm, Saturday: 9am-1pm	Med Clinic
Morpheus8 London (OFFICIAL) C	https://www.m8	130 Harley St	1	5	Monday-Friday 9 AM-8 PM	Wellness Clinic
Noel McDermott	https://www.noel	4 Devonshire St	1	5	24/7	Psychiatric Clinic
Online Clinic (UK) Limited	onlineclinicuk.l	London W1G 9PG, Ur	1	1	Monday-Friday: 8am-7pm, Saturday: Closed, Sunday: Closed	Med Clinic
Pearl Harley Street Clinic	www.pearlharley	10 Harley St, London	1	1	Monday-Friday 8 AM-5 PM	Med Clinic
The Harley Street Hair Clinic	www.harleystreeth	139 Harley St	1	1	Monday-Friday: 9am-6pm, Saturday: Closed, Sunday: Closed	Wellness Clinic
The Harley Street Spine Clinic	www.harleystreet	136 Harley St	1	5	Monday-Friday: 8am-6pm, Saturday: Closed, Sunday: Closed	Med Clinic
UK Gynecomastia Clinics	www.ukgynecomast	57 Harley St	1	5	Monday-Friday: 8am-7pm, Saturday: 9am-5pm, Sunday: Closed	Med Clinic
Pregnancy and Gynaecology Clinic Londonpregn	www.londonpregn	112 Harley St	2	4.5	Monday-Friday: 8am-7pm, Saturday: 9am-5pm, Sunday: Closed	Med Clinic
The Aesthetic Medical Clinic	www.theaesthetic	43 Devonshire St	2	5	X	Wellness Clinic
Ascenti Physio Marylebone	www.ascenti.ph	Lower Ground Floor, 1	2	5	Mo-Thu 8:00-19:00, Fr 8:00-17:00, Sa 10:00-13:00	Med Clinic
Comfort Shields, CPsychol, MPHil	https://comfort	4 Devonshire St, Harl	2	5	Mo, Fr 09:00-15:00, Tue-Wed 09:00-20:00, Thu 09:00-19:00	Psychiatric Clinic
Harley Medical Aesthetics Clinic	www.harleymedical	London W1G 9PR, Un	2	5	Monday-Friday: 9am-5pm, Saturday: Closed, Sunday: Closed	Wellness Clinic
Harley Street Dr	www.harleystreet	23 Harley St, London, U	2	5	Monday-Friday: 8am-7pm, Saturday: Closed, Sunday: Closed	Private Practice Office
HFS Clinics	https://hfs-clin	4 Devonshire St, Lonc	2	5	Monday-Friday: 8am-7pm	Med Clinic
KC Cosmetics	https://www.kccos	New Cavendish St, Lc	2	5	Monday-Friday 9 AM-7 PM	Wellness Clinic
London Clinic of Medicine and Surgery	https://london-clin	27 Harley St, London	2	2	Monday-Friday: 9am-8pm, Saturday: 9am-5:30pm, Sunday: Closed	Med Clinic
London Laser Clinics	www.londonlaser	1 Harley St	2	5	Monday-Friday: 8am-7pm, Saturday: 9am-5pm, Sunday: Closed	Wellness Clinic
The Aura Clinic London	www.theauraclin	10 Harley Pl	2	5	Monday-Friday: 9am-6pm, Saturday: Closed, Sunday: Closed	Wellness Clinic
The Gilmore Groin and Hernia Clinic	www.gilmoregroin	108 Harley St	2	3	Monday-Friday: 8am-6pm, Saturday: Closed, Sunday: Closed	Med Clinic
The Harley Street Clinic Cancer &	www.harleystreet	81-83 Harley St	2	3	Monday-Friday: 8am-5pm, Saturday: Closed, Sunday: Closed	Med Clinic
London Fertility Clinic	www.londonfertil	1, 7 Harley St	3	5	Monday-Friday: 8am-7pm, Saturday: Closed, Sunday: Closed	Med Clinic
London Mole Removal Centre	www.londonmole	41 Harley St	3	4.3	Monday-Friday: 8am-6pm, Saturday: Closed, Sunday: Closed	Wellness Clinic
The Gender Clinic	www.thegender	London W1G 7HF, Un	3	3.7	Monday-Friday: 8am-6pm, Saturday: Closed, Sunday: Closed	Med Clinic
C. Linics	www.clinicgroup	Room 2B, 114 New C	3	5	Tuesday 10 AM-8 PM	Med Clinic
Dr Barry Grimaldi LLP	https://www.gr	16 Devonshire St	3	3.7	Mo-Fr 09:00-17:00	Private Practice Office
One Heart Clinic Marylebone	https://www.ohc	10-11 Bulstrode Pl, Lc	3	3.7	Mo-Fr 9:00-19:00	Med Clinic
Rylon Clinic - Private Gynaecology	https://www.rylon	Harley Street Diagnos	3	5	Mo 9:00-20:00, Thu 14:00-20:00	Med Clinic
SkinBestie by Dr Ewa Kania	https://www.skin	114 New Cavendish S	3	5	Monday - Saturday 9 AM-6 PM	Wellness Clinic
The International Clinic	www.international	Harley Street Ltd, 10 Ha	3	1.7	Monday-Friday: 8am-7pm, Saturday: By appointment only, Sunday: Closed	Med Clinic
Medicspot Clinic Balham	https://www.medi	296 Cavendish Rd, Lc	3	4.7	Mo-Sa 9:00-17:00	Med Clinic

Criteria

General Parameters

Marketing Parameters

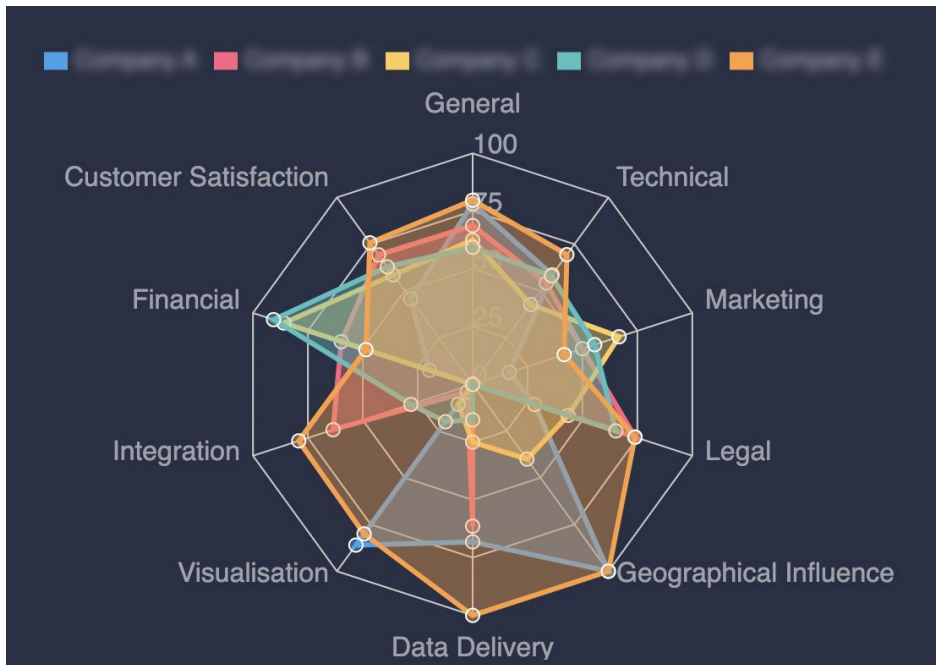
Specialists Parameters

Laboratories Parameters

Price Parameters

Insurance Parameters

Harley Street SWOT Analysis



General Parameters



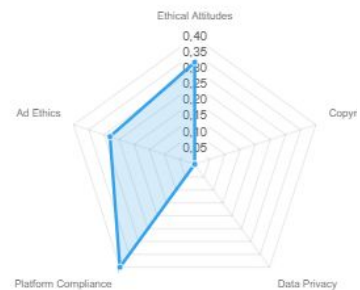
Technical Parameters



Marketing Parameters



Legal Parameters



Harley Street Today

Explore the centre of the medical excellence in London with our interactive **3D visualization of Harley Street**. Effortlessly navigate through the streets and explore a myriad of clinics and medical facilities. With advanced filters, find relevant information about each clinic, including specialties, services, ratings, price ranges. Whether seeking specific treatments or browsing options, our visualization simplifies the search process, ensuring you find the perfect match for your healthcare needs. Uncover the wealth of medical expertise Harley Street has to offer with our tool.

Longevity Clinics

The Longevity Clinic extends an invitation to potential investors to join this groundbreaking venture, which promises not only substantial financial returns but also the opportunity to be at the forefront of a shift in how health and wellness are understood and achieved. Investing in the Longevity Clinic offers a chance to be part of a venture that is set to redefine the healthcare landscape, contributing to a societal shift towards greater health, longevity, and well-being.

Show Filters

ABC Clinic

Hair Clinic
10 Harley St, London W1G 9PF
441234567890

Worktime: Monday-Friday: 8am-7pm, Saturday:
9am-5pm, Sunday: Closed
www.example.com
\$100

Rating: 4.5

Moorfields Private Eye Centre

Eye Clinic
9-11 Bath St, London EC1V 9LF
441234567890

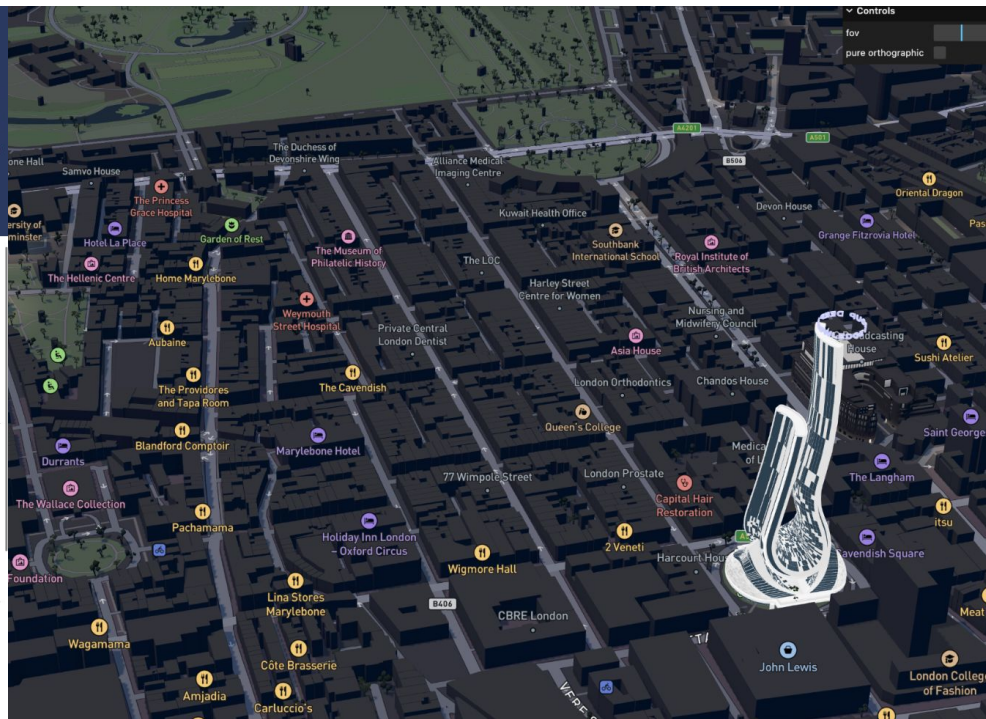
Worktime: Monday-Friday: 8am-6pm, Saturday:
9am-1pm
www.example.com
\$200

Rating: 4.0

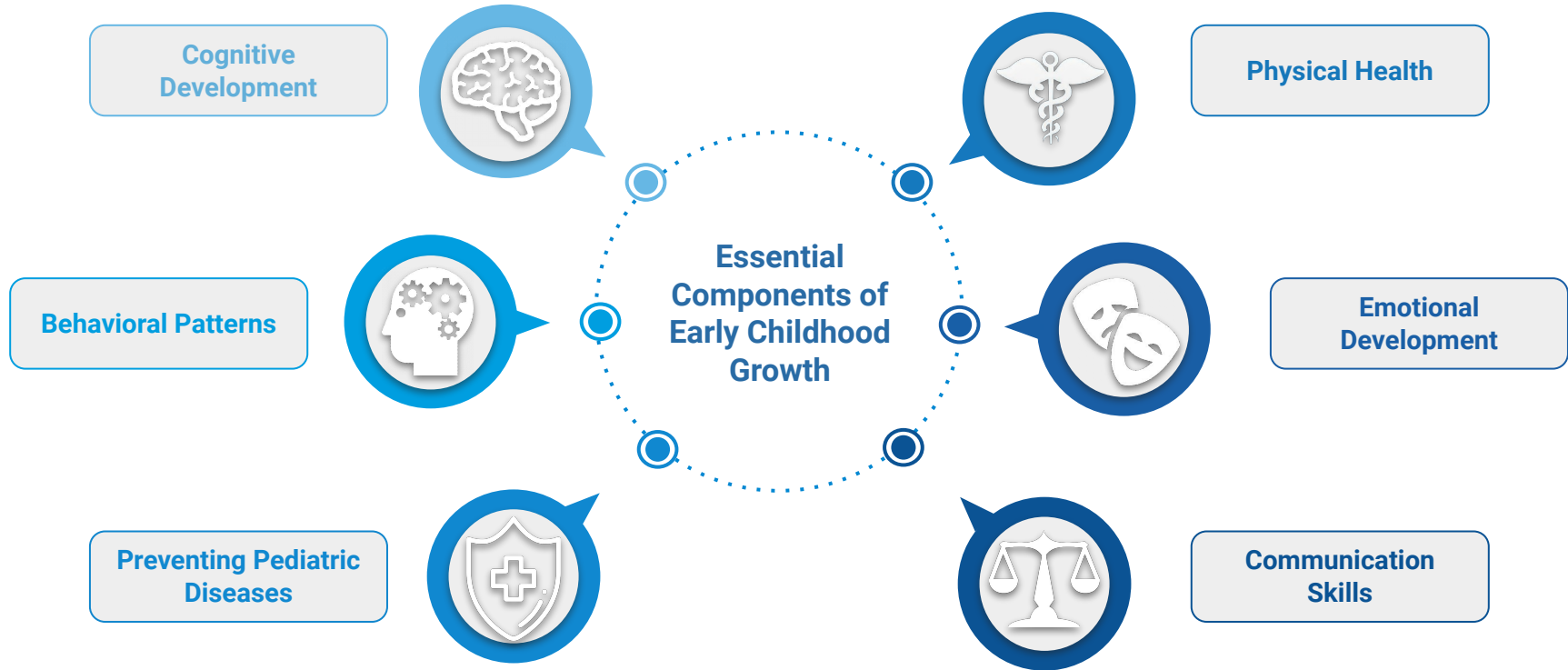
The Harley Street Spine Clinic

Orthopaedic Clinic
136 Harley St, London W1G 7JZ
441234567890

Worktime: Monday-Friday: 8am-6pm, Saturday:
Closed, Sunday: Closed
www.example.com



Harley Street: A Missed Opportunity



Harley Street: A Missed Opportunity

Prioritizing children's well-being is of utmost importance, and while Harley Street currently has limited focus in this realm, acknowledging the pivotal role of early childhood (especially up to 4 years) is essential.

The establishment of a pediatric clinic on Harley Street presents a distinctive opportunity to deliver **exceptional healthcare** tailored exclusively for children in an esteemed and centrally located setting. Responding to the **growing demand** for specialized pediatric care, our clinic aspires to provide comprehensive services, ensuring the optimal health of our young patients. Leveraging the **prestigious reputation** of Harley Street, combined with a dedicated focus on children's health, positions our clinic as an appealing choice for families seeking superior medical care. This initiative not only addresses a critical healthcare gap but also contributes to the illustrious **medical legacy** of Harley Street.

Frequent Childhood Afflictions

Respiratory
Infections

Allergies

Asthma

Obesity

Type 1 Diabetes

Ear Infections

Gastroenteritis

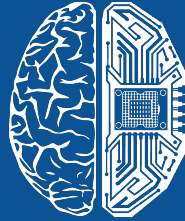
ADHD

Conclusions



Conclusions

- **Longevity Clinics** is a complex industry, which requires a unique approach and a thorough **assessment and forecasting of resources and efforts**. The Longevity industry is expected to become one of the leading industries in the near future and to outnumber other sectors in both size and market capitalisation. **This Industry include Longevity Clinics, Precision Clinics that offer longevity diagnostic and treatments.**
- **Longevity medicine** is an advanced branch of **precision, preventive and predictive medicine** powered by biomarkers of Ageing and Longevity. Because the industry is relatively young and perspective, it has a potential to experience a significant double digit annual growth in the next few years. The field encompasses the likewise rapidly evolving areas of **sport, space, regenerative, reproductive and functional medicine**.
- **Biomarker panels** are integral part of Longevity Medicine. The panels identified from **gene expression data** are used to **diagnose diseases** and/or stratify patients into different disease stages. Machine learning and data mining algorithms were adapted to identify biomarker candidates. The **comprehensive methodology** created by scientific experts allowed to identify the best longevity clinics on Harley Street.
- **Longevity Diagnostics** based on biomarkers of longevity and aging allows you to improve the quality of your health by **monitoring, predicting, preventing and detecting various diseases** in the early stages. Aging is an integral part of the life of any living organism, so the concepts of **smart medicine** and the idea of age-well come to the fore in which a new topical direction of **longevity medicine** is formed before our eyes.
- Additional **Longevity Services** provided by precision diagnostic centres allow to investigate specific health issues and get a full picture of the patient's state of health. Specific longevity services include cell and biomaterials storage, concierge services, biophysical evaluation.
- **Longevity Clinics and Services in London** report describes the concept of the longevity medicine and provides a comprehensive overview of the longevity clinics and **additional longevity services** on Harley Street and in London. The report represents the current state of Longevity Industry in one of the most **advanced Longevity centres in London including Harley Street area.**



DEEP
KNOWLEDGE
GROUP

E-mail: info@dkv.global

Website: www.dkv.global

DKG Disclaimer:

The information and opinions in this report were prepared by Deep Knowledge Group. The information herein is believed by DKG to be reliable but DKG makes no representation as to the accuracy or completeness of such information. There is no guarantee that the views and opinions expressed in this communication will come to pass. DKG may provide, may have provided or may seek to provide advisory services to one or more companies mentioned herein. In addition, employees of DKG may have purchased or may purchase securities in one or more companies mentioned in this report. Opinions, estimates and analyses in this report constitute the current judgment of the author as of the date of this report. They do not necessarily reflect the opinions of DKG and are subject to change without notice. DKG has no obligation to update, modify or amend this report or to otherwise notify a reader thereof in the event that any matter stated herein, or any opinion, estimate, forecast or analysis set forth herein, changes or subsequently becomes inaccurate. This report is provided for informational purposes only. It is not to be construed as an offer to buy or sell or a solicitation of an offer to buy or sell any financial instruments or to participate in any particular trading strategy in any jurisdiction.